

SB 39/2015

29 July 2015

Young people not in education, employment or training (NEET) (Year to 31 March 2015)

This Bulletin summarises the available statistics on young people not in education, employment or training (NEET) in Wales. The definitive source for estimates of the proportion of young people who are NEET in Wales is the annual Statistical First Release (SFR), *Participation of young people in education and the labour market* which was also published on 29 July 2015. It provided final data for 2013 and provisional estimates for 2014, which are also included within this Bulletin.

Additionally, this Bulletin provides users with timelier, but less statistically robust, statistics from the Annual Population Survey (APS), between SFRs; and includes analysis by gender, age, region, and disability status, which is not possible with the annual SFR data. This bulletin also provides estimates for year 11 leavers from the Careers Wales pupil destinations survey.

o Summary

Most recent results from these sources:

16-18 year olds

- **SFR basis - *New data*** As at end 2014 (provisional), 10.9 per cent of 16-18 year olds were NEET (12,200) compared with 10.9 per cent (12,300) at end 2013;
- **APS basis - *New data*** For the year ending Quarter 1 2015, 8.4 per cent of 16-18 year olds were estimated to be NEET, compared with 10.7 per cent at the year ending Q1 2014.
- **Pupil Destinations basis** -As at Nov 2014, 3.1 per cent of Year 11 leavers were NEET compared with 3.7 per cent in 2013.

19-24 year olds

- **SFR basis - *New data*** As at end 2014 (provisional), 20.7 per cent of 19-24 year olds were NEET (53,700) compared with 21.1 per cent (54,500) at end 2013;
- **APS basis - *New data*** For the year ending Quarter 1 2015, 19.7 per cent of 19-24 year olds were estimated to be NEET, compared with 19.8 per cent for the year ending Q1 2014.

The statistics included in this bulletin are taken from the following sources:

- Statistical First Release (SFR) '*Participation of young people in education and the labour market*' using education data sources and the Annual Population Survey (APS);
- Annual Population Survey (ONS); and
- Careers Wales Pupil Destinations from Schools in Wales survey.

Statistician: Rachel Lloyd

Tel: 029 2082 3357

E-mail: Post16Ed.stats@wales.gsi.gov.uk

Next update: July 2016 (provisional)

Twitter: www.twitter.com/statisticswales | www.twitter.com/ystadegaucymru

Cyhoeddwyd gan Y Gwasanaethau Gwybodaeth a Dadansoddi
Llywodraeth Cymru, Parc Cathays, Caerdydd, CF10 3NQ
Ffôn – Swyddfa'r Wasg **029 2089 8099**, Ymholiadau Cyhoeddus **029 2082 3332**
www.llyw.cymru/ystadegau

Issued by Knowledge and Analytical Services
Welsh Government, Cathays Park, Cardiff, CF10 3NQ
Telephone – Press Office **029 2089 8099**, Public Enquiries **029 2082 5050**
www.gov.wales/statistics



Llywodraeth Cymru
Welsh Government

1. Introduction

The purpose of this bulletin is to provide policy makers and those working with young people with data to monitor trends of young people who are NEET by age, gender and disability and assess the impact of education and labour market interventions on young people. This supports the Welsh Government's strategic approach to reducing the proportion of young people who are NEET as set out in the *Youth Engagement and Progression Framework* the *2012-2016 Tackling Poverty Action Plan* and the *Programme for Government* (see notes for further details).

2. Data Sources

Statistical First Release (SFR) series

The number and proportion of young people who are NEET in Wales is published annually in the Statistical First Release (SFR) *Participation of young people in education and the labour market*.

This SFR series should be used:-

- as the definitive headline measures for young people who are NEET in Wales.
- to monitor the *2012-2016 Tackling Poverty Action Plan* target to reduce the proportion of 16 to 18 year olds who are NEET to 9 per cent by 2017.

However, these data are only available annually and can only be disaggregated by gender; therefore it is necessary to supplement this series with other data sources.

Annual Population Survey (APS) series

The Annual Population Survey (APS) provides more regular and timely data on young people who are NEET. The statistics from the Annual Population Survey are based solely on survey data on relatively small sample sizes of 16-18 year olds and are statistically less robust than those published in the annual SFR. Care also needs to be taken when comparing estimates from the different sources due to differences in definitions.

The APS series can be used:-

- where a more recent indication of data is required, between publication of SFRs;
- to provide analysis by region, disability status or single year of age (although it is necessary to use estimates based on 3 year averages for this purpose).
- to monitor the *2012-2016 Tackling Poverty Action Plan* target to reduce the proportion of young people aged 19-24 who are NEET in Wales relative to the UK as a whole by 2017

Careers Wales Survey

The only source of data in respect of local areas available is the Careers Wales pupil destinations survey. This provides estimates of young people who are NEET in the October after completing Year 11 and is available at a local authority level. However the Careers Wales survey uses slightly different definitions for NEET than those used in the SFR. It should also be noted that this survey includes pupils from secondary and special schools; those attending FE colleges and independent schools are not.

The Careers Wales series can be used:-

- to consider relative levels of young people who are NEET by local authority.

3. SFR series (last updated – July 2015) *New data*

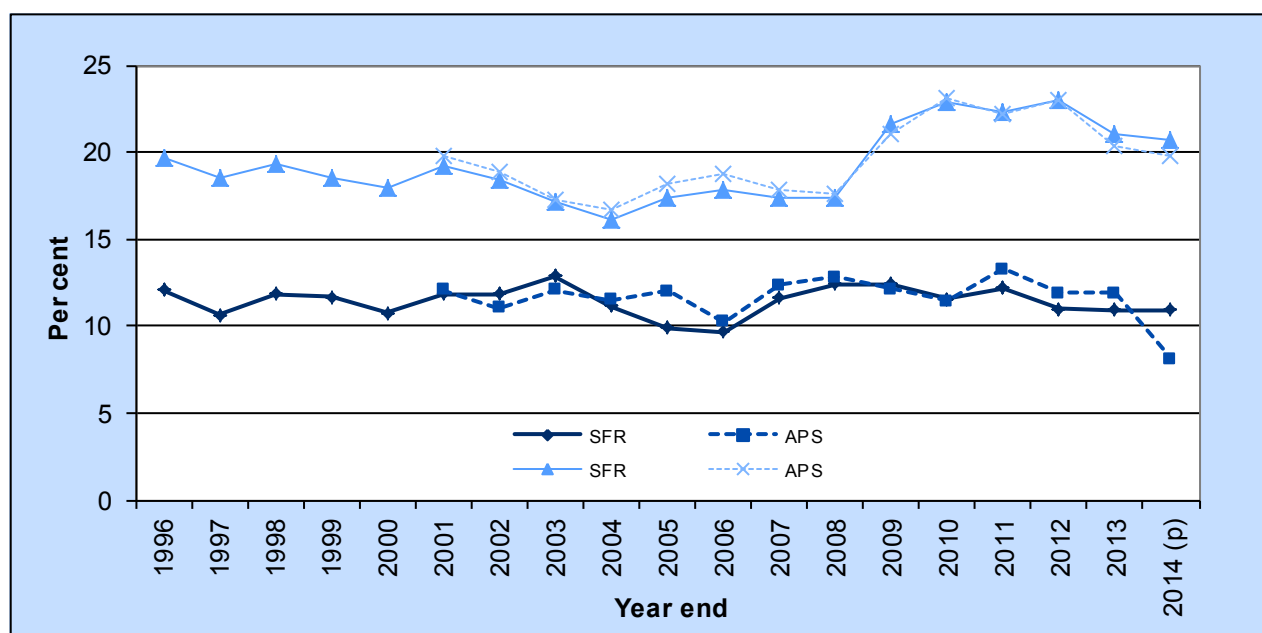
[Link to SFR](#)

The estimates published in the SFR are a measure of the proportion of young people who are NEET as at the end of the calendar year. It is based on population estimates as at the end of the calendar year, education enrolment counts in December for work-based learning, further and higher education and in the following January for schools. The Annual Population Survey is used to estimate the proportion of those not in education or training who are unemployed or inactive and relates to the whole of the reference year. Due to the use of survey data within the calculations there will be some element of sampling variability in the estimates. As a result changes in trend need to be interpreted with a degree of caution, as changes could be attributed to sampling effects as well as real effects. Currently it is not possible to distinguish between these impacts. 2014 estimates are provisional at this point, and use the best estimate for 2014 currently available for each aspect of participation; this includes some final data, some provisional data and some modelling. Estimates for 2013 take into account final data, which was not available at the time of the provisional figures last year.

For this series the data presented covers 16-18 year olds and 19-24 year olds on an academic age basis (ie age as at 31 August prior to the start of the academic year).

Trends over time

Chart 1: Young people not in education, employment or training in Wales: Comparison of estimates in the Statistical First Release and using the Annual Population Survey¹ (calendar year)



(p) SFR: Year end 2014 is provisional

¹ For years 2001-2003 the source is the annual Local Labour Force Survey for Wales

In addition to the SFR estimate the chart also shows an estimate of NEET rate based on the Annual Population Survey only. These estimates are for the calendar year. Supporting data is shown in table 1.

- **16-18 year olds**

The chart shows that the proportion of 16-18 year olds who are NEET has remained fairly constant at a rate of between 10-13 per cent (accounting for around 12,000-15,000 young people) over the years 1996 to 2014, with the provisional estimate for 2014 at 11 per cent (12,200) of 16-18 year olds who are NEET.

- **19-24 year olds**

Prior to the start of the 2008 recession the proportion of those aged 19-24 who are NEET was broadly stable; with an overall decrease in the proportion of 19-24 who are NEET between 1996 and 2004 (falling from 20 per cent to 16 per cent), remaining broadly unchanged between 2005 and 2008 (17-18 per cent).

After the start of the 2008 recession it can then be seen that the proportion of 19-24 who are NEET saw a large increase from 17 per cent in 2008 to levels around 22 to 23 per cent from 2009 onwards, falling back to 21 per cent (53,700) at end 2014 (provisional).

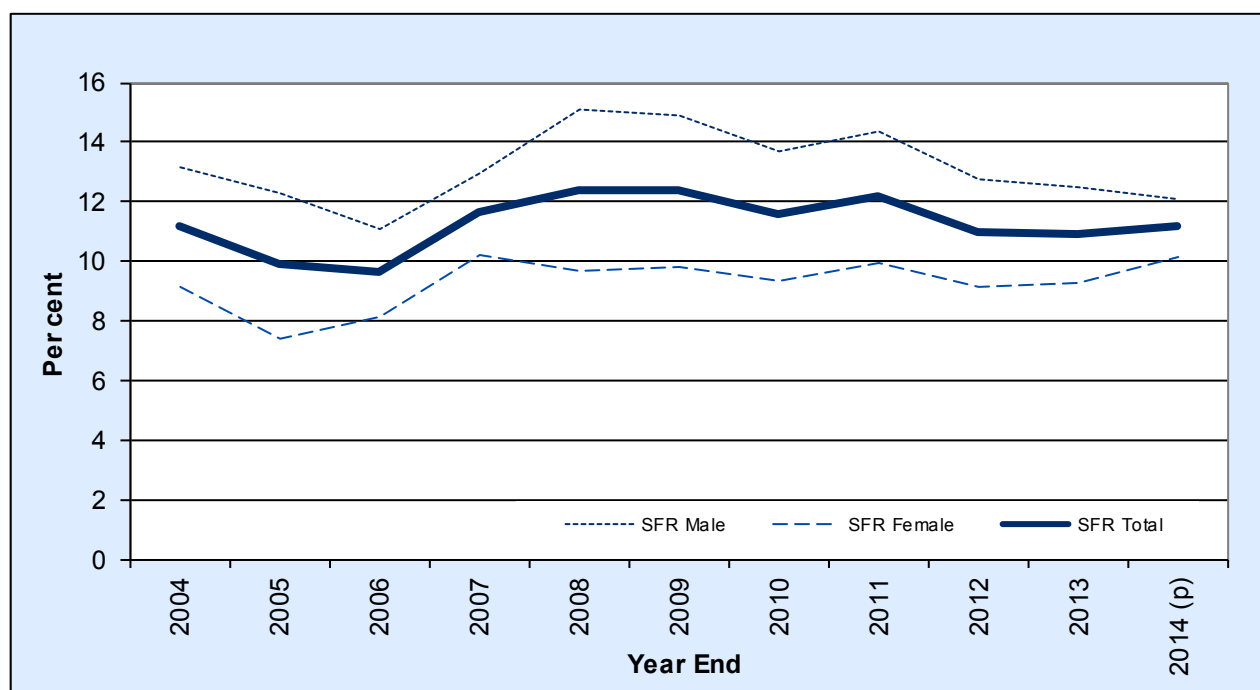
Gender Breakdown

From the SFR series it is also possible to produce a gender split of the proportion of young people who are NEET as at the end of the calendar year. Gender information from the SFR series is only available from 2004 onwards.

- 16-18 year olds

For this series the data presented covers 16-18 year olds on an academic age basis (i.e. age as at 31 August prior to the start of the academic year) broken down by gender.

Chart 2: Young people not in education, employment or training in Wales aged 16-18 (academic age), by gender, 2004-2014 (calendar year)



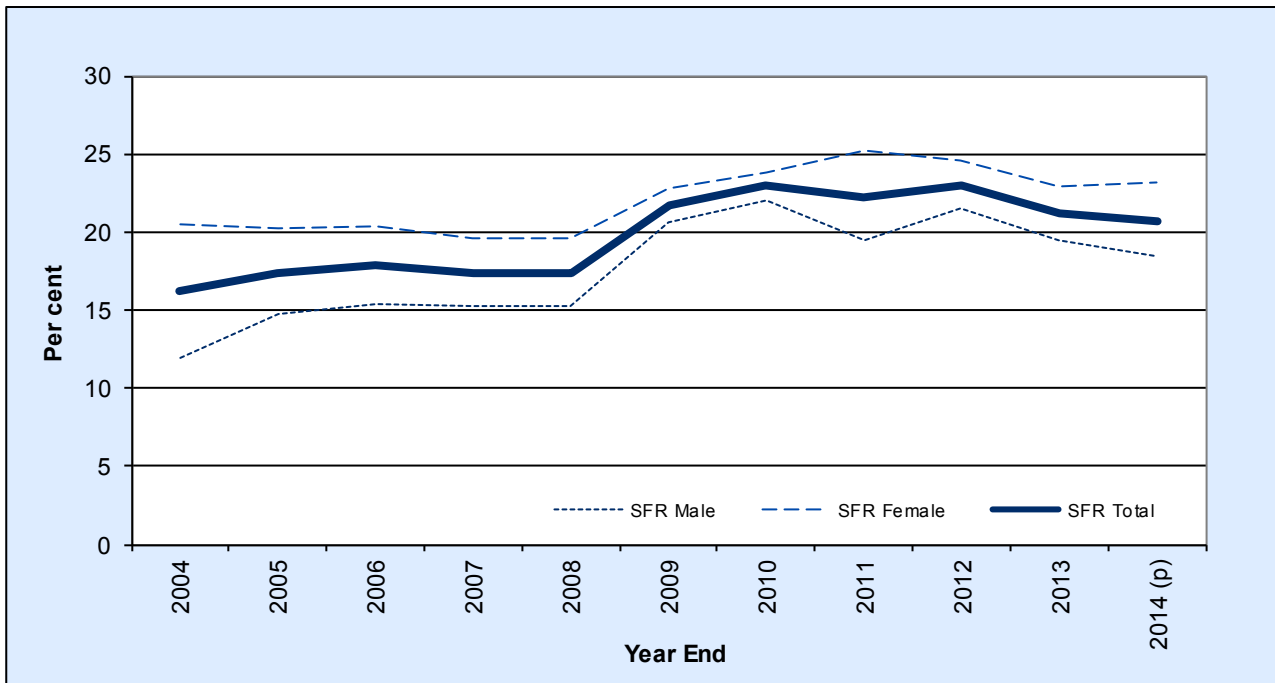
From the above chart it can be seen that the male and female proportions of young people aged 16-18 who are NEET have broadly followed similar trends between 2004 and 2014, with the proportion lower for females than for males throughout the period. Provisional figures for 2014 indicate : -

- 12 per cent (6,800) of males aged 16-18 were NEET, a decrease from 12.5 per cent in the previous year, which compared to;
- 10 per cent (5,400) of females aged 16-18 were NEET, an increase from 9 per cent in the previous year.

- 19-24 year olds

For this series the data presented covers 19-24 year olds on an academic age basis (i.e. age as at 31 August prior to the start of the academic year) broken down by gender.

Chart 3: Young people not in education, employment or training in Wales aged 19-24 (academic age), by gender, 2004-2014 (calendar year)



From the above chart it can be seen that the male and female proportions of young people aged 19-24 who are NEET converged over the period 2004 to 2010, but have diverged subsequently, with the proportion higher for females than for males (the reverse of the position for 16-18 year olds) throughout the period. Provisional figures for 2014 indicate : -

- 18 per cent (24,700) of males aged 19-24 were NEET, a decrease from 19 per cent in the previous year which compared to;
- 23 per cent (29,000) of females aged 19-24 were NEET, broadly the same level as in the previous year.

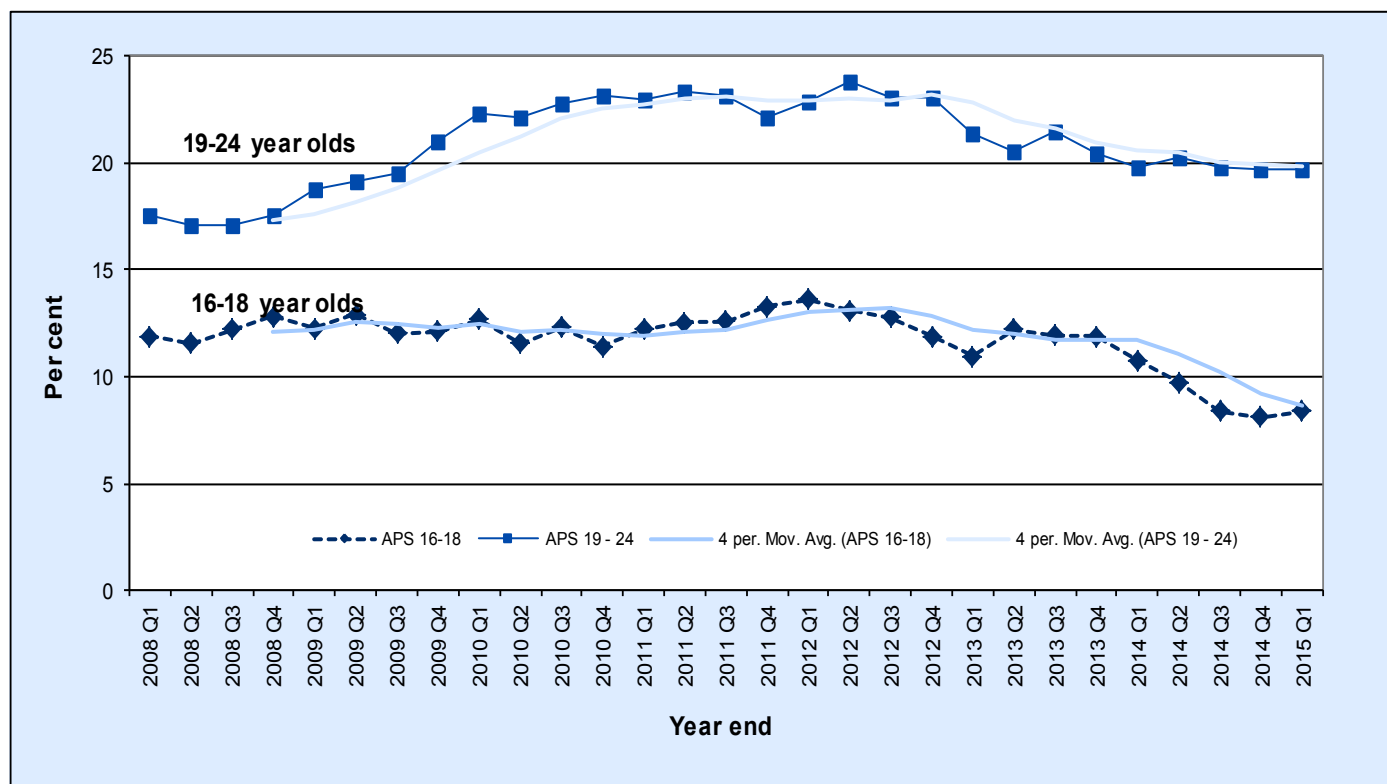
4. APS rolling year series (last updated – July 2015) *New data*

The data presented covers 16-18 year olds and 19-24 year olds on an academic age basis (ie age as at 31 August prior to the start of the academic year).

The Annual Population Survey (APS) is published on a rolling year basis every quarter. The most recent published year covers the period April 2014 to March 2015. Estimates based on the APS are less robust than the annual series, given the sample sizes involved, particularly for the 16 to 18 cohort. They can be used to give an indication, only, of trends in NEET rates between publications of the annual SFR.

The reference period for these estimates is the whole year and therefore there is a large overlap in the responses included in consecutive rolling years. Therefore the overall trend of the series should be considered with comparisons to the same point a year previous and not changes between consecutive rolling year estimates. As these estimates are based on survey data there will be some variability in estimates due to sampling variation.

Chart 4: Young people not in education, employment or training in Wales: Annual Population Survey (rolling year ending) and 4 point moving average¹



¹A 4 point moving average is an average of four consecutive periods of the APS (e.g. average of Years to 2013 Q2, 2013 Q3, 2013 Q4, 2014 Q1), which is 'moved' or rolled forward from the start and end of the data. The purpose of this average is to highlight any trends in the data by removing or smoothing some of the volatility within the data.

Chart 4 shows the APS rolling year series for the years (April 2007 to March 2008) to (April 2014 to March 2015) along with a four-point moving average of the series for both those aged 16-18 and 19-24. Over this period the estimate of the proportion of young people who are NEET aged 16-18 has fluctuated between 8.1 to 13.5 per cent. There was a slight upward trend between the years ending Q1 2011 to Q1 2012, which has shown a downward trend since.

Whilst for those aged 19-24 who are NEET it has fluctuated between 17 to 24 per cent, with a marked increase starting around the 2008 recession, showing a decrease from late 2012.

Table 2 includes approximate 95 per cent confidence intervals for these estimates, which for all periods is around ± 2 per cent.

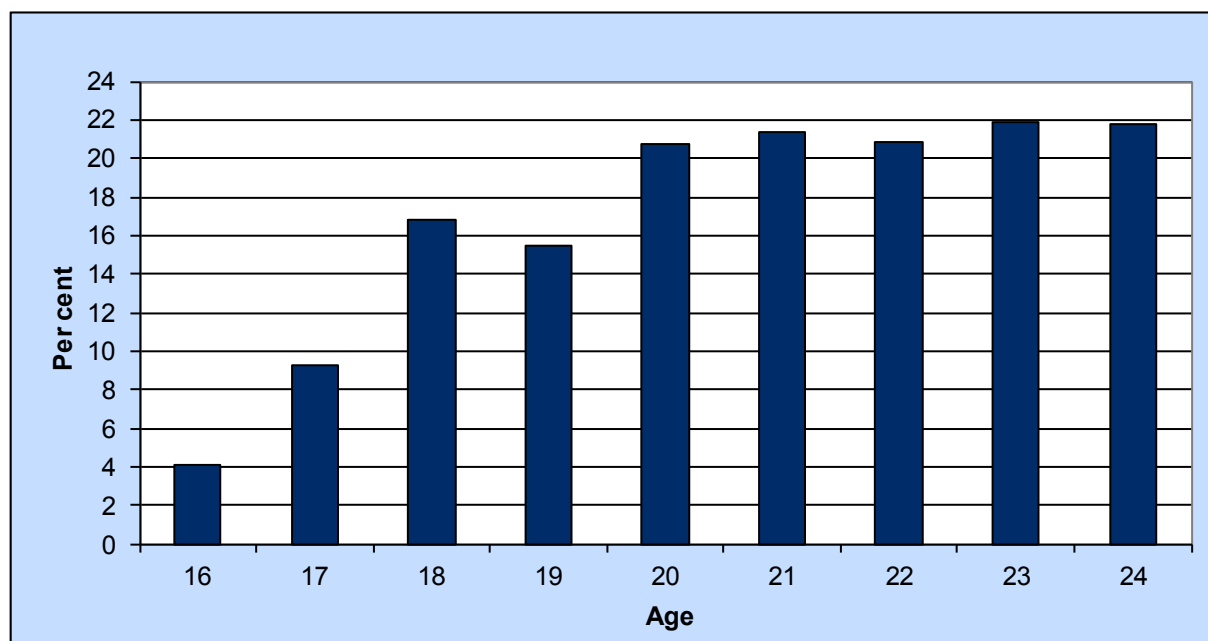
The latest data show for the year ending Quarter 1 2015, 8.4 per cent of 16-18 year olds were estimated to be NEET, compared with 10.7 per cent for the year ending Quarter 1 2014.

For 19-24 year olds 19.7 per cent were estimated to be NEET for the year ending Quarter 1 2015, compared with 19.8 per cent for the year ending Quarter 1 2014.

NEET Characteristics

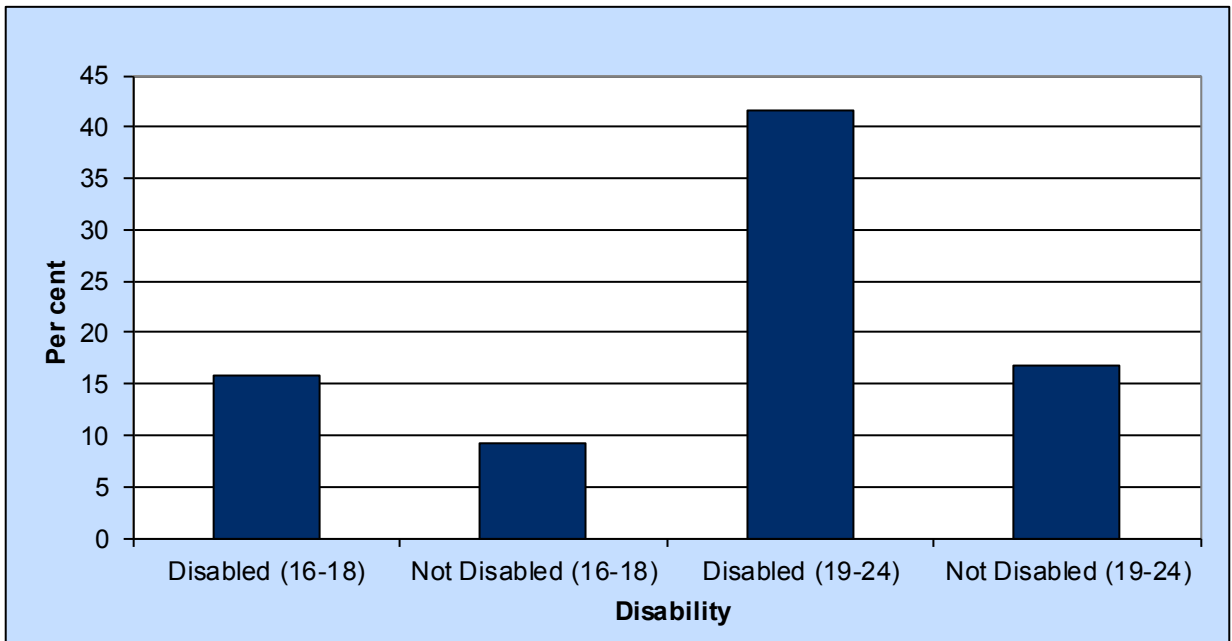
The APS can also be used to provide analysis of NEET rates by characteristics, which are not available via the SFR series. Due to small sample sizes, when looking at sub-groups it has been necessary to use estimates based on the average of 3 periods and therefore should be used to compare groups or regions only. Chart 5 shows analysis by single year of age, Chart 6 shows analysis by disability status and Chart 7 provides regional data. See notes section for information on disability status and regional breakdown. Supporting data is shown in table 3.

Chart 5: Young people not in education, employment or training in Wales, by age (average of years ending 2013Q1, 2014Q1, 2015Q1)



- The proportion of those who are NEET generally increases by age, between 16 to a peak at 23 (with exception of age 19 in this case).

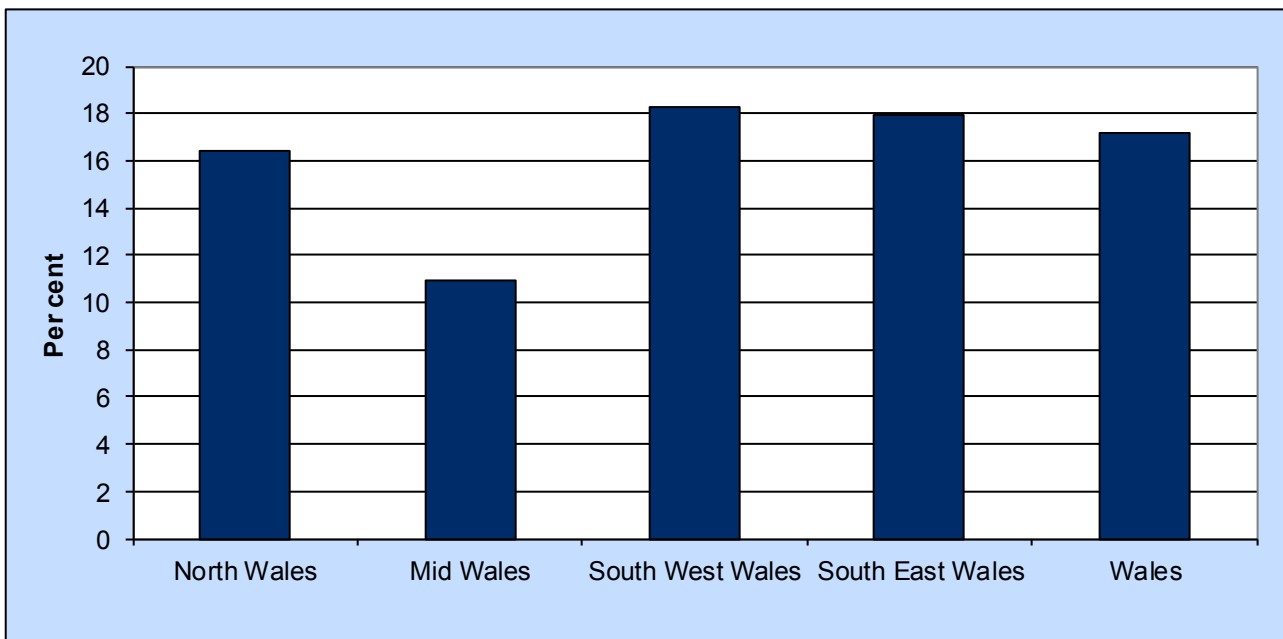
Chart 6: Young people not in education, employment or training in Wales, by age and disability status¹ (average of years ending 2013Q1, 2014Q1, 2015Q1)



¹Please see notes section for the definition and coverage of disability status.

- The proportion of young people who are NEET is higher for those disabled people for each age group.
- The proportion of disabled people who are NEET rises from 15.7 per cent at age 16-18 to 41.6 at age 19-24. Similarly the proportion of people not disabled who are NEET also increases by age.

Chart 7: Young people aged 16-24 not in education, employment or training in Wales, by region (average of years ending 2013Q1, 2014Q1, 2015Q1)



- The proportion of young people (aged 16-24) who are NEET varied from 10.9 per cent in Mid Wales to 18.2 per cent in South West Wales.

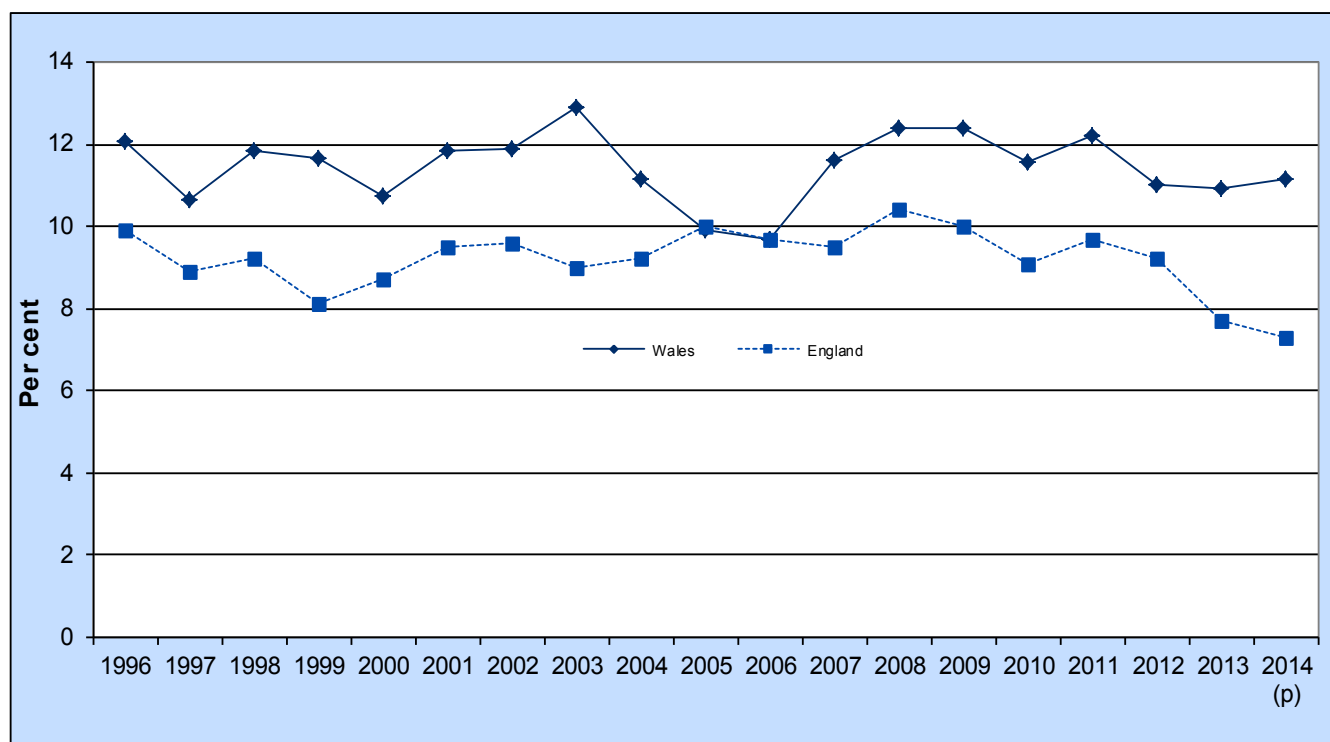
5. Comparisons with the rest of the UK *New data*

SFR measure

The Department for Education (DfE) publish estimates of 16-18 year old NEET rates for England using similar methodology to the SFR on an annual basis. The most recent published data are 2014 provisional figures. Chart 8 shows a comparison of the English and Welsh estimates. England does not produce an equivalent measure for 19-24 year olds:

<https://www.gov.uk/government/organisations/department-for-education/series/statistics-need>

Chart 8: Young people not in education, employment or training in Wales, aged 16-18, Wales and England



From Chart 8 it can be seen that between 1996 and 2014 the proportion of 16-18 year olds NEET in England and Wales have followed broadly similar trends, but with Wales having a larger proportion of 16-18 year olds NEET than England. However there are a few periods where this is not the case.

From 2003 the proportion of 16-18 year olds who were NEET in Wales decreased until 2006, resulting in Wales having a similar proportion as England for 2005 and 2006. The provisional figures for 2014 show an increased gap between England and Wales, with the proportion of 16-18 year olds NEET in England at its lowest rate at 7.3 per cent. This in part reflects the cohorts of 16 and 17 year olds in the England data are the first two cohorts of young people subject to duty to participate under the Raising the Participation Age (RPA) legislation. The legislation increases the age to which all young people in England are required to remain in education or training.

For both series changes in trend need to be interpreted with a degree of caution, as changes could be attributed to sampling effects as well as real effects.

For Scotland and Northern Ireland directly comparable NEET estimates for 16-18 year olds and 19-24 year olds are not published.

Labour Force Survey/Annual Population Survey

The DfE also publish a quarterly brief on young people who are NEET which includes NEET rates estimates based on the Quarterly Labour Force Survey (LFS). Additionally from May 2013 the Office for National Statistics (ONS) has produced UK estimates of young people who are NEET, also based on the Quarterly Labour Force Survey:

<http://www.ons.gov.uk/ons/rel/lms/young-people-not-in-education--employment-or-training--neets-/index.html>

The quarterly estimates are not directly comparable with the Welsh APS only estimates published in this bulletin. A direct comparison for Wales with England and the UK LFS measure is not provided as the sample size for 16 to 18 year olds and 19 to 24 year olds in Wales is not sufficiently large.

However, using a similar methodology to that used by the ONS, but using the Annual Population Survey rather than the LFS, we can provide estimates of young people who are NEET across the UK.

Please note that these estimates will differ from the official estimates produced by the DfE and ONS and other relevant departments and should therefore be interpreted with caution. An article explaining the difference between NEET statistics across the UK was published by the ONS, alongside their first publication of UK estimates of young people who are NEET:

<http://www.ons.gov.uk/ons/guide-method/method-quality/specific/labour-market/articles-and-reports/young-people-who-are-neet.pdf>

Estimates of the proportion of young people who are NEET for each of the UK countries for the years ending Q4 2013 and Q4 2014 are given in Table 4.

For 16-18 year olds the proportion estimated to be NEET decreased in Wales and across the UK as a whole between 2013 and 2014. The estimate for Wales fell below the UK average.

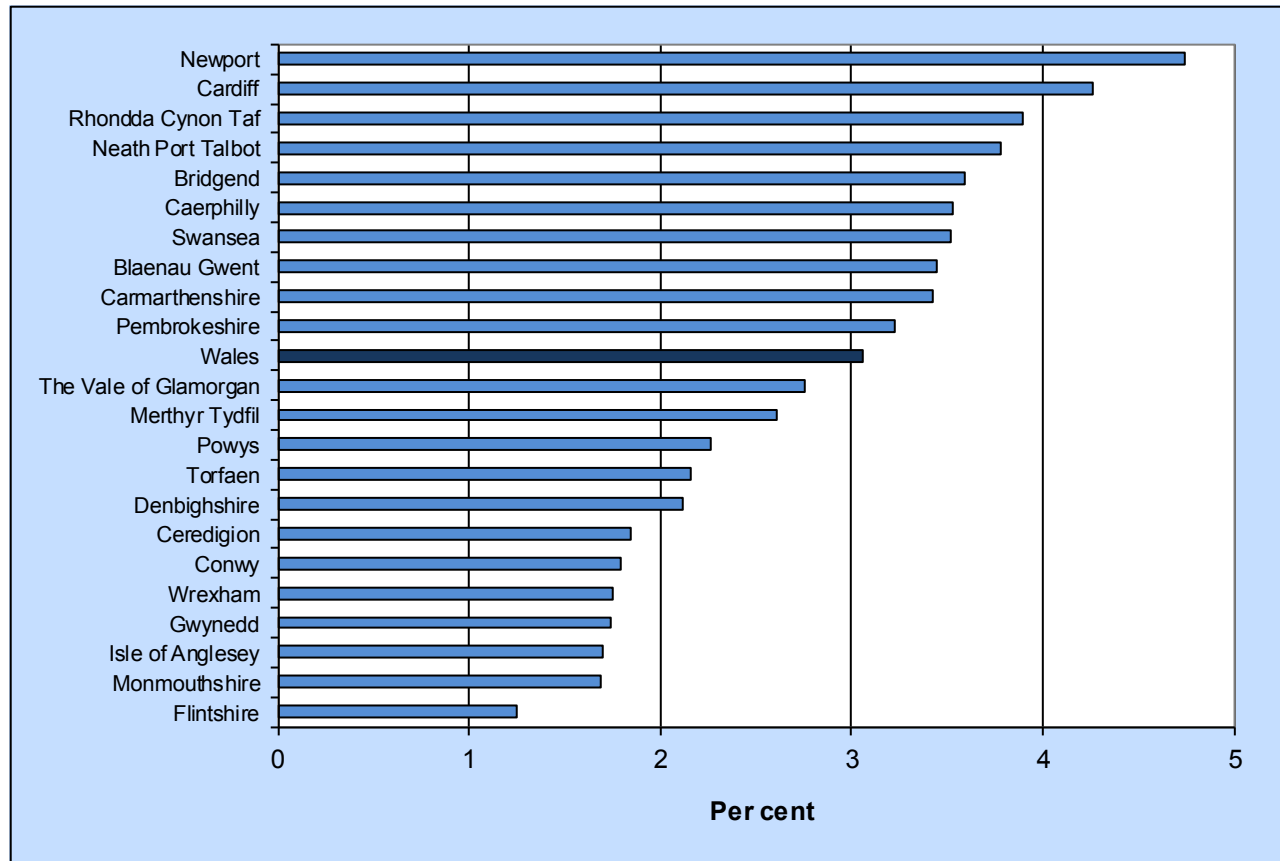
Between 2013 and 2014 the proportion of 19-24 estimated to be NEET decreased in Wales and across the UK as a whole. The difference between the proportions of 19-24 year olds estimated to be NEET in Wales and the UK as a whole increased from 1.5 percentage points in 2013 to 2.2 percentage points in 2014.

6. Pupil destinations from schools in Wales (last updated –April 2015)

[Link to Pupil Destinations Headline](#)

Careers Wales undertakes an annual survey of all leavers from maintained schools¹ in Wales to obtain their destinations as at end of October. The results from this survey can be used to provide estimates of NEET rates by local authority for 16 year olds. Chart 9 shows the proportion of 2014 Year 11 leavers who were NEET.

Chart 9: Year 11 leavers who are NEET by local authority of school, 2014



¹ Includes maintained secondary and special schools, PRUs and some learners educated other than at school.

7. Tables

Table 1: Young people not in education, employment or training in Wales, Calendar Year

	16-18 year olds				19-24 year olds			
	SFR NEET		APS NEET		SFR NEET		APS NEET	
	Per cent	Number	Per cent	Number	Per cent	Number	Per cent	Number
End 1996	12.1	12,800	19.7	40,900
End 1997	10.6	11,700	18.5	36,800
End 1998	11.9	13,200	19.3	37,600
End 1999	11.6	12,800	18.6	37,100
End 2000	10.7	11,700	17.9	36,500
End 2001	11.9	13,400	12.0	13,300	19.2	40,400	19.8	39,400
End 2002	11.9	13,600	11.1	12,500	18.4	39,800	18.9	38,900
End 2003	12.9	15,000	12.1	13,900	17.1	38,300	17.3	36,100
End 2004	11.2	13,100	11.5	13,200	16.2	36,900	16.7	36,500
End 2005	9.9	11,700	12.0	13,600	17.4 r	40,400 r	18.2	41,000
End 2006	9.7	11,500	10.3	11,900	17.9	42,400 r	18.7	41,600
End 2007	11.6 r	14,000	12.4	14,800	17.4	42,200 r	17.8	41,200
End 2008	12.4	15,000 r	12.8	15,100	17.4	42,800	17.6	41,800
End 2009	12.4	14,800 r	12.1	14,100	21.7 r	54,100 r	21.0	50,400
End 2010	11.6 r	13,500	11.4	13,700	22.9 r	58,200 r	23.1	55,500
End 2011	12.2	14,000	13.3	15,400	22.3 r	57,400	22.1	54,400
End 2012	11.0 r	12,500 r	11.9	13,700	23.0 r	59,900 r	23.0	58,400
End 2013	10.9 r	12,300 r	11.9	13,500	21.1 r	54,500 r	20.4	51,500
End 2014 (p)	10.9	12,200	8.1	8,800	20.7	53,700	19.7	50,900

Source: WG Statistical First Release (SDR /2015) Participation of Young People in Education and the Labour Market; Annual Local Labour Force Survey for Wales 2001-2003; Annual Population Survey 2004-2015

(p) SFR: Year end 2014 is provisional

(r) revised since last publication

**Table 2: Young people not in education, employment or training in Wales,
Annual Population Survey (Rolling Year End)**

Year End	16-18 year olds			19-24 year olds		
	Per cent	Approx 95% Confidence Interval	Number	Per cent	Approx 95% Confidence Interval	Number
2007 Q1	10.3	± 1.5	12,200	18.6	± 1.6	41,700
2007 Q2	11.5	± 1.6	13,500	18.4	± 1.6	42,100
2007 Q3	12.2	± 1.6	14,500	18.0	± 1.6	41,400
2007 Q4	12.4	± 1.7	14,800	17.8	± 1.6	41,200
2008 Q1	11.9	± 1.6	14,300	17.6	± 1.6	41,200
2008 Q2	11.6	± 1.7	13,900	17.1	± 1.6	40,200
2008 Q3	12.2	± 1.7	14,400	17.1	± 1.6	40,600
2008 Q4	12.8	± 1.8	15,100	17.6	± 1.7	41,800
2009 Q1	12.2	± 1.8	14,300	18.8	± 1.7	44,600
2009 Q2	12.9	± 1.9	14,900	19.2	± 1.7	45,700
2009 Q3	12.0	± 1.8	14,000	19.6	± 1.7	46,500
2009 Q4	12.1	± 1.8	14,100	21.0	± 1.8	50,400
2010 Q1	12.7	± 1.9	14,700	22.3	± 1.8	53,700
2010 Q2	11.6	± 1.8	13,400	22.1	± 1.8	53,300
2010 Q3	12.3	± 1.8	14,400	22.8	± 1.8	55,300
2010 Q4	11.4	± 1.8	13,700	23.1	± 1.9	55,500
2011 Q1	12.2	± 1.8	14,600	22.9	± 1.9	55,400
2011 Q2	12.5	± 1.9	15,000	23.3	± 1.9	56,800
2011 Q3	12.6	± 1.9	14,900	23.2	± 1.9	56,300
2011 Q4	13.3	± 2.0	15,400	22.1	± 1.8	54,400
2012 Q1	13.6	± 2.0	15,600	22.9	± 1.8	56,700
2012 Q2	13.1	± 1.9	15,000	23.8	± 1.9	59,700
2012 Q3	12.8	± 1.9	14,700	23.0	± 1.8	58,100
2012 Q4	11.9	± 1.8	13,700	23.0	± 1.8	58,400
2013 Q1	11.0	± 1.8	12,400	21.4	± 1.8	54,400
2013 Q2	12.2	± 1.9	13,800	20.6	± 1.8	51,800
2013 Q3	11.9	± 1.9	13,200	21.4	± 1.9	53,200
2013 Q4	11.9	± 1.8	13,500	20.4	± 1.8	51,500
2014 Q1	10.7	± 1.7	12,300	19.8	± 1.8	50,100
2014 Q2	9.7	± 1.7	10,900	20.3	± 1.8	51,700
2014 Q3	8.4	± 1.6	9,300	19.8	± 1.8	50,800
2014 Q4	8.1	± 1.6	8,800	19.7	± 1.8	50,900
2015 Q1	8.4	± 1.6	9,000	19.7	± 1.8	50,600

Source: Annual Population Survey 2006-2015

Table 3: Young people not in education, employment or training (NEET) in Wales, by gender, age and disability status¹

	Number			Per cent			Approximate 95% Confidence Interval ³		
	2011Q1-2013Q1	2012Q1-2014Q1	2013Q1-2015Q1	2011Q1-2013Q1	2012Q1-2014Q1	2013Q1-2015Q1	2011Q1-2013Q1	2012Q1-2014Q1	2013Q1-2015Q1
By age (persons)									
16	1,900	1,700	1,500	5.0	4.6	4.1	± 1.2	± 1.2	± 1.1
17	4,500	4,200	3,600	11.7	11.3	9.3	± 1.8	± 1.8	± 1.6
18	7,800	7,500	6,200	19.9	19.4	16.8	± 2.3	± 2.3	± 2.3
19	8,500	7,400	6,800	19.5	16.7	15.5	± 2.4	± 2.2	± 2.2
20	10,100	10,100	9,300	22.3	22.6	20.8	± 2.6	± 2.6	± 2.5
21	10,100	9,800	9,400	23.6	22.5	21.4	± 2.7	± 2.6	± 2.6
22	9,700	8,900	8,800	24.2	22.1	20.8	± 2.7	± 2.6	± 2.6
23	8,800	9,400	9,100	22.3	23.1	21.8	± 2.6	± 2.6	± 2.7
24	8,300	8,000	8,300	22.4	21.3	21.8	± 2.7	± 2.6	± 2.7
By disability²									
16-18 Disabled	2,500	2,500	2,100	19.4	18.6	15.7	± 3.9	± 3.8	± 3.5
Not Disabled	11,600	10,900	9,000	11.3	10.8	9.2	± 1.1	± 1.1	± 1.0
Unknown	.	100	100
19-24 Disabled	14,300	13,600	14,600	44.0	40.8	41.6	± 3.5	± 3.4	± 3.3
Not Disabled	41,100	39,900	36,800	19.1	18.3	16.8	± 1.1	± 1.1	± 1.0
Unknown	.	200	300
By Region (16-24)									
North Wales	12,500	12,300	12,100	16.9	16.7	16.4	± 1.5	± 1.5	± 1.5
Mid Wales	3,100	3,300	2,900	12.2	12.3	10.9	± 2.4	± 2.2	± 2.0
South West Wales	14,600	14,400	14,400	18.6	18.3	18.2	± 1.8	± 1.8	± 1.8
South East Wales	39,500	37,100	33,500	21.3	19.9	17.9	± 1.2	± 1.2	± 1.1
Wales	69,700	67,200	62,900	19.2	18.4	17.2	± 0.8	± 0.8	± 0.8

Source: Annual Population Survey 2011-2015

¹Data shown relate to 3 period averages from the APS due to small sample sizes, e.g. the latest period covers the average of the Years to 2012Q4, 2013Q4 and 2014Q4.

²Please see notes section for the definition and coverage of disability status.

³All estimates should be viewed in conjunction with their Confidence Intervals. Confidence Intervals indicate how accurate an estimate is. For example, a 95% CI of +/- 2.0 per cent means that the true value is between 2.0 percentage points above the estimate and 2.0 percentage points below the estimate, for 95% of estimates.

Table 4: Estimates of the proportion of young people not in education or training *nor* in employment (NEET), by age and UK country, 2013 and 2014

Per cent

	16 to 18 year olds		19 to 24 year olds	
	2013	2014	2013	2014
Wales	11.9	8.1	20.4	19.7
England	9.3	8.2	18.9	17.1
Scotland	12.3	9.4	18.1	18.3
Northern Ireland	6.1 (!)	8.7 (!)	20.5	21.9
UK	9.6	8.3	19.0	17.5

Source: Annual Population Survey

(!!) The data item is based on between approx. 10 and 25 responses and is categorised as being of low quality.

(!) The data item is based on between approx. 25 and 40 responses and is categorised as being of limited quality.

Table 5: Year 11 Leavers for Schools in Wales known to be not in education, employment or training by Local Authority

	2010	2011	2012	2013	2014
Wales	5.4	4.4	4.2	3.7	3.1
Isle of Anglesey	5.3	2.7	2.4	3.7	1.7
Gwynedd	3.6	3.6	3.0	2.4	1.7
Conwy	3.7	4.0	3.4	3.6	1.8
Denbighshire	4.4	3.6	2.9	4.1	2.1
Flintshire	2.8	2.7	2.3	3.6	1.3
Wrexham	4.2	3.4	3.2	3.2	1.8
Powys	2.9	3.0	2.2	2.7	2.3
Ceredigion	2.3	3.3	2.3	1.3	1.8
Pembrokeshire	4.8	3.8	3.1	3.4	3.2
Carmarthenshire	2.9	2.8	4.3	3.0	3.4
Swansea	4.2	3.1	3.2	3.9	3.5
Neath Port Talbot	6.6	4.6	3.1	4.4	3.8
Bridgend	7.1	4.4	6.4	3.7	3.6
The Vale of Glamorgan	4.6	4.3	3.9	3.8	2.8
Cardiff	8.8	7.7	6.7	4.9	4.3
Rhondda Cynon Taf	5.7	3.9	4.5	4.1	3.9
Merthyr Tydfil	7.6	5.6	6.2	1.9	2.6
Caerphilly	6.0	4.5	5.9	4.4	3.5
Blaenau Gwent	8.7	6.6	4.2	4.6	3.4
Torfaen	7.0	6.7	5.5	2.5	2.2
Monmouthshire	3.9	3.8	3.8	2.8	1.7
Newport	7.5	6.7	4.9	4.9	4.7

Source: Careers Wales Pupil Destinations from Schools in Wales

Missing value symbols used are as outlined below:-

- .. The data item is not available
- .
- The data item is not exactly zero, but estimated as zero or less than half the final digit shown
- * The data item is disclosive or not sufficiently robust for publication
- (r) Data have been revised since previous edition of bulletin

8. NOTES

Changes to this bulletin and planned changes for future bulletins

This and future bulletins

There are no changes for this or future bulletin.

Policy/Operational context

This Bulletin summarises the available statistics on young people not in education, employment or training (NEET) in Wales. It is updated annually, and supplemented by a web page which is updated quarterly with latest estimates from the Annual Population Survey, and annually with the headline SFR series (July) and the Careers Wales destinations survey data (April). The statistics are used within the Welsh Government to monitor trends in the level and proportion of young people who are NEET.

The *Youth Engagement and Progression Framework* was announced in January 2013, with an implementation plan published in October 2013. The Framework outlines the Welsh Government's approach to reducing the number of young people aged 11 to 25 who are not engaged in education, employment or training (NEET). The Framework is based on 6 key building blocks of Identifying young people most at risk of disengagement; Better brokerage and co-ordination of support for them; Stronger tracking and transitions of young people through the system; Ensuring provision meets the needs of young people; Strengthening employability skills and opportunities for employment; and Greater accountability for Local Authorities. Please see the following link for further detail :-
<http://gov.wales/topics/educationandskills/skillsandtraining/youthengagement/?lang=en>

The *2012-2016 Tackling Poverty Action Plan* was published in June 2013. It outlines the Welsh Government's commitment to long-term well being through key objectives in Tackling Poverty. As part of the plan, there is a stated intention to substantively reduce the number of people who are not in education, training or employment through refocusing resource as early as possible in identifying the young people who most need support, tracking them through the system until they reach university, Further Education or sustained employment.

The proportion of young people who are NEET is also one of the measures included within the *Programme for Government* in the context of Tackling Poverty.

I. Summary of data sources

a. NEET SFR series

Description	This data is the definitive measure for NEET rates in Wales.
Uses	<ul style="list-style-type: none"> • This series is the key statistical source for estimates of the number and proportion of young people who are NEET in Wales. • The SFR series provides policy makers and those working with young people with data to monitor trends by age and gender and the impact of education and labour market interventions on young people. • The Welsh Government is committed to reducing the proportion of young people who are NEET in Wales as set out in the new <i>Youth Engagement and Progression Framework</i> and the <i>2012-2016 Tackling Poverty Action Plan</i>. The document "<i>Building Resilient Communities: taking forward the Tackling Poverty Action Plan</i>" set a target to reduce the proportion of 16 to 18 year olds who are NEET to 9 per cent by 2017, which will be measured using the SFR series. • This series is also used in the measure of young people who are NEET in Wales within the <i>Programme for Government</i>
Published source	WG Statistical First Release <i>Participation of young people in education and the labour market</i>
Primary sources	Pupil Level Annual Schools' Census (WG) Lifelong Learning Wales Record (WG) Student Record (HESA) Open University Annual Population Survey (ONS) Mid- year estimates of resident population and population projections (ONS and Welsh Government)
Last period covered	End 2014 (p)
Last published	July 2015
Next published	July 2016 (provisional)

b. NEET APS series

Description	This series is a rolling year annual estimate of the proportion of young people who are NEET from the Annual Population Survey.
Uses	<ul style="list-style-type: none"> • This series provides more timely data than the annual SFR and is used to provide an indication of trends in the proportion of young people who are NEET between SFRs. It is not directly comparable with the SFR series and estimates are less robust. • The APS estimates, published quarterly, are based on survey data and therefore there is variability due to sampling error. For the latest 12 month period around 1,200 young people aged 16-18 and 2,000 young people aged 19-24 responded to the survey. • Also given the structure of the APS there is a large overlap between consecutive rolling years. Trends should be considered and not changes between consecutive rolling year estimates. Comparisons are made with the same point a year previous. For sub-groups the sample sizes are relatively small and subject to relatively large sampling error so averages of 3 rolling years are generally used. • The harmonised definition used to define the APS NEET estimates allows for some comparison across the other UK countries and English regions. However, there are differences of approach in terms of publication, for example use of LFS or APS, different age groups, the use of academic age versus actual age and differences in an adjustment methodology used in apportioning missing values. As such comparison with the UK should be made with caution. • The Welsh Government is committed to reducing the proportion of young people who are NEET in Wales relative to the UK in the document <i>Taking forward the Tackling Poverty Action Plan</i>; which will be measured using the estimated from the APS.
Published source	Annual Population Survey (ONS)
Primary sources	Annual Population Survey (ONS)
Last period covered	Year ending 2015 Q1
Last published	APS published June 2015, NEET APS series published July 2015
Next published	APS published September 2015, NEET APS series published October 2015

c. NEET Pupil Destinations Survey

Description	This series is an annual estimate of the Year 11 leavers (aged 16) who are NEET as at October following the end of the academic year.
Uses	Neither the SFR nor the APS series can be used to provide estimates at a Unitary Authority level due to small sample sizes in the APS and methodology used to derive the SFR estimates. This series provides an indication of the level of young people who are NEET at a Unitary Authority level. It should only be used for 16 year olds. It is not directly comparable with the SFR series or the APS series due to differences in definitions.
Published source	Destinations of leavers from schools in Wales (Careers Wales)
Primary sources	Destinations of leavers from schools in Wales (Careers Wales)
Last period covered	October 2014
Last published	April 2015
Next published	April 2016

II. Definitions

Education and training

For the SFR estimates: it is based on those who are enrolled on a course in a school, Further Education (FE) college, Higher Education (HE) institution (including the Open University (OU)) or with a work-based learning provider in Wales. In addition, an estimate is made of the number of those in employment who undertake off-the job training.

For the APS based estimates: respondents to the APS who are either:

- Currently carrying out an apprenticeship; or
- Currently on a government employment or training scheme; or
- Currently working or studying towards any qualifications; or
- Have undertaken any job-related education or training in the previous 4 weeks; or
- Currently enrolled on any full-time or part-time education course excluding leisure classes and are still attending or waiting for term to (re)start.

Employment

The APS is used to estimate the proportion in employment for both the SFR and APS based estimates. In addition employment status from Post-16 enrolment data is used in the SFR.

From the APS respondents are in employment if they are either:

- Employed; or
- Self-employed; or
- On government employment or training programmes; or
- An unpaid family worker.

Disability

The APS records the current disability of respondents as:-

- Disability Discrimination Act (DDA) (current disability): those with a long-term disability which substantially limits day to day activities
- Work-limiting disabled: those with a long-term disability which affects the kind of or amount of work they might do
- Both DDA and work-limiting disabled, or
- Not disabled

The analysis in this bulletin is on the basis of all those recording a disability.

When using the APS based data on young people who are NEET by disability status there are discontinuities in the data series which are outlined below. As such users should interpret these estimates with caution.

Due to the addition of a short introduction at the start of the disability module in 2010 quarter 1, a discontinuity was identified in the series, affecting this period onwards.

The impact of this introduction is thought to be positive in that it prepares respondents for the set of disability questions. Any increase caused by this change should result in a more complete measure of actual disability. This change to the introduction added to the disability module in quarter 1 2010 is thought to be the key driver of the step increase in disability. The earlier estimates can still be considered 'best estimates' for those periods and should give a robust picture of changes over time, however, direct comparisons between pre- and post- 2010Q1 estimates should not be made. In addition, due to the rolling annual time periods used in the APS, this change will gradually affect the estimates between 2010 Q1 and 2010 Q4 and will only reach a consistent basis from 2010 Q4 onwards.

Further from the first quarter of 2012, the method for calculating the 'not disabled' group changed, to exclude those for whom disability status is unknown, which created a discontinuity in the data from this period onwards.

Key Quality Information

III. Annual Population Survey (APS): Quality

The Annual Population Survey (APS) is a household survey carried out by the ONS. The survey seeks information on respondents' personal circumstances, including their labour market status and their education and training activity. The APS combines the boosted samples of the Labour Force Survey (LFS) and provides rolling four quarter data. The APS datasets are derived from a sample of approximately 21,000 people of working age across Wales, with a minimum of around 700 people of working age in most local authorities in Wales. However, for 16-18 year olds there are around 1,200 respondents in the sample across Wales. Similarly for 19-24 year olds there are around 2,000 respondents in the sample across Wales.

As the data come from a survey, the results are sample-based estimates and are therefore subject to differing degrees of sampling variability, i.e. the true value for any measure lies in a differing range about the estimated value. Approximate 95 per cent confidence intervals have been calculated for the APS estimates of the proportion of young people aged 16-18 and 19-24 who are NEET. These have been calculated assuming a simple weighted random sample and do not take into account the design of the sample and thus only provide an indication of the confidence interval. Additionally the adjustment method for apportioning missing values creates an artificial aggregated sample size used in the calculation of confidence intervals. The sampling variability increases as the detail in the data increases and therefore for the 16-18 and 19-24 age groups, of interest in this bulletin, estimates for sub-groups and regions are based on three period averages.

Further information about the quality of the Annual Population Survey can be accessed via the following link

<http://www.ons.gov.uk/ons/guide-method/method-quality/specific/labour-market/labour-market-statistics/index.html>

Chart 1 demonstrates, from 2006 onwards, the similar levels and trend in young people who are NEET shown between the SFR and APS series in general, with a difference at most of 3 percentage points.

IV. Timeliness

The latest SFR provides new data for 2013 and provisional data for 2014. The provisional estimates use the best data for 2014 currently available for each aspect of participation; this includes some final data, some provisional data and some modelling.

V. Comparability

The method used to define young people who are NEET using the Annual Population Survey (APS) is harmonised with an agreed UK methodology of deriving NEET estimates. More information can be found within a paper published by the Office for National Statistics on;

<http://www.ons.gov.uk/ons/guide-method/method-quality/specific/labour-market/articles-and-reports/young-people-who-are-neet.pdf>

VI. Estimates below Wales level

It is not possible to disaggregate the SFR NEET estimate down to UA level. This is due to the way the data is put together using enrolment data and because the employment status is estimated using the APS. For 16-18 year olds the number of respondents to the APS is relatively small in each local authority; less than 100 respondents.

The APS has been used to estimate the proportion of young people who are NEET by region. However as the sample sizes are around 100-500 in each area for those aged 16-18 the estimates have been averaged over three rolling years for 16-24 year olds. The regional breakdown used within the Department for Education and Skills was changed as at the beginning of the 2010. The regions in use are as follows:

North Wales:	Isle of Anglesey, Gwynedd, Conwy, Denbighshire, Flintshire, Wrexham
Mid Wales:	Powys, Ceredigion
South West Wales:	Pembrokeshire, Carmarthenshire, Swansea, Neath Port Talbot
South East Wales:	Bridgend, Vale of Glamorgan, Rhondda Cynon Taf, Merthyr Tydfil, Caerphilly, Blaenau Gwent, Torfaen, Monmouthshire, Newport, Cardiff

The Pupil Destinations survey provides an estimate of 16 year olds who are NEET by local authority. However, there are some differences in the NEET definitions compared with the SFR and APS based estimates.

VII. Revisions

SFR series: Provisional 2014 figures will be finalised in the next SFR publication, due for release in July 2016. For the proportion of 16-18 year olds estimated to be NEET in 2013, the difference between the provisional estimate published in the previous release and the final published estimate was +0.4 percentage points. Figures from 2004 have been revised following provision of reweighted Annual Population Survey datasets, which impact the economic activity proportions. The impact of these revisions is limited. Further information is given in the SFR publication itself.

APS series: These estimates of young people who are NEET are revised when the Office for National Statistics (ONS) releases revised Annual Population Survey datasets. . Data from 2004 Q4 to 2014 Q3 were revised at the previous quarterly update following the provision of reweighted Annual Population Survey datasets in light of new population estimates based on the 2011 Census of Population. The impact of the new data was minimal with differences in the order of 0.0 to +0.2 percentage points in the percentage of young people who are NEET.



All content is available under the Open Government Licence v3.0 , except where otherwise stated.
<http://www.nationalarchives.gov.uk/doc/open-government-licence/version/3/>