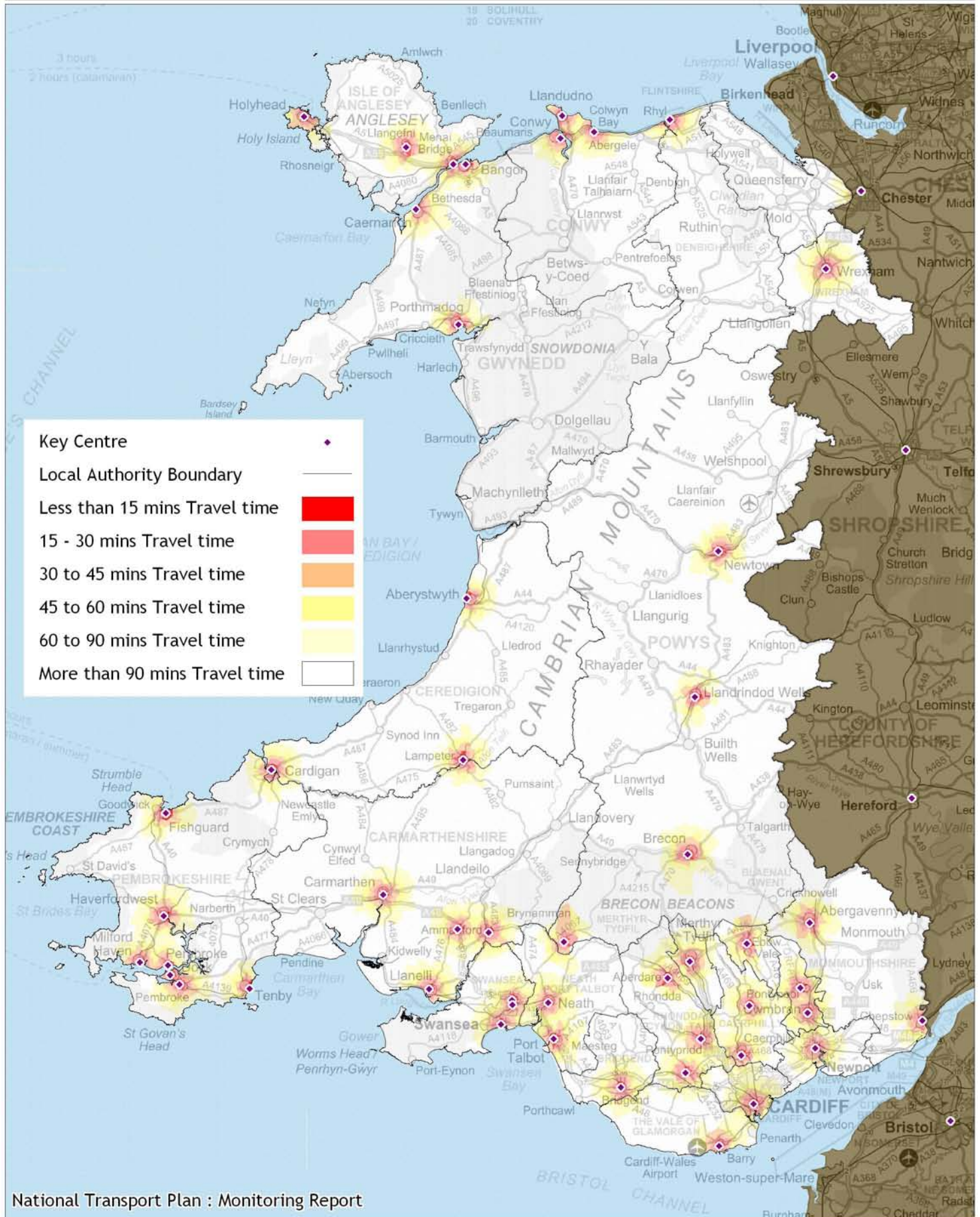
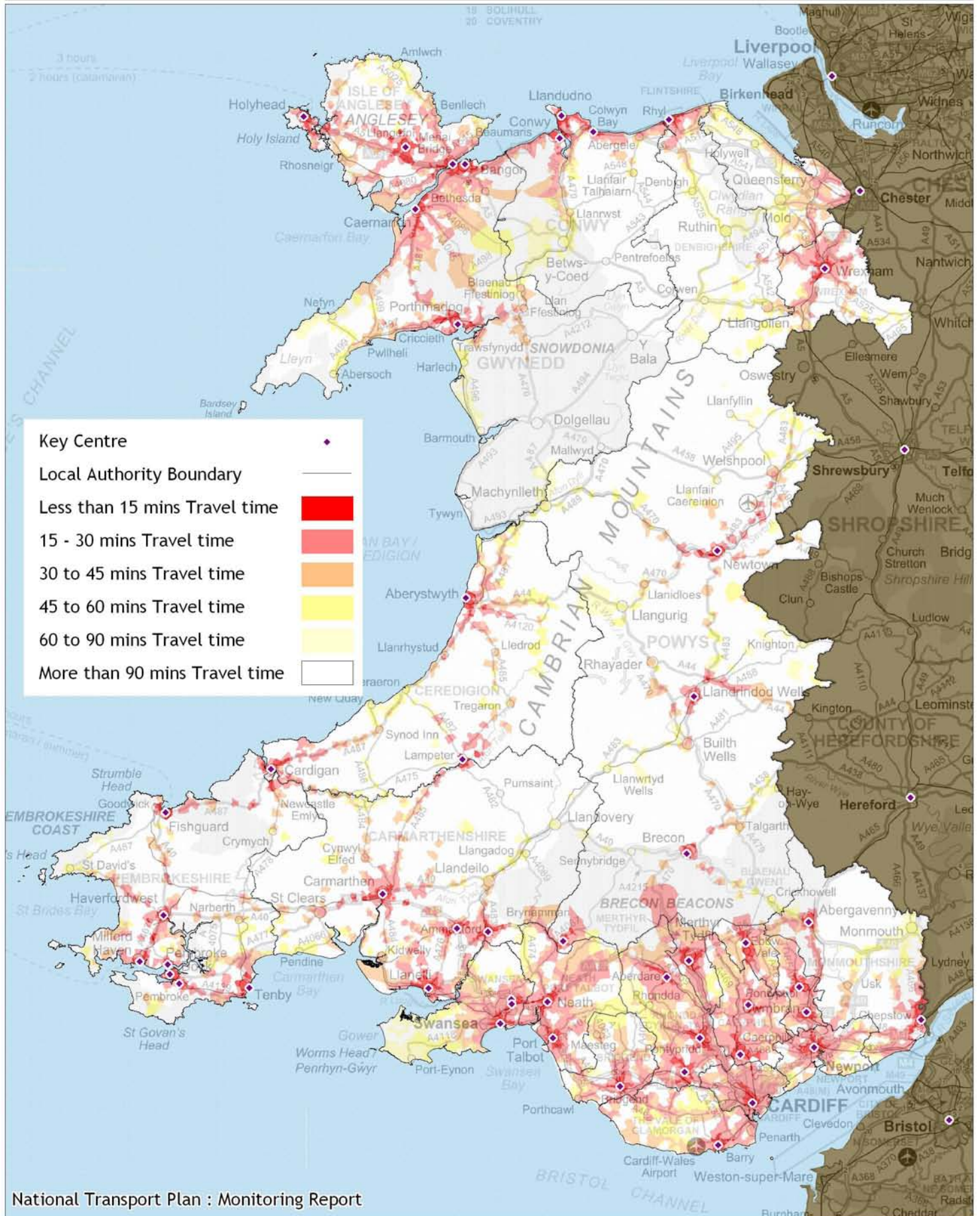


6.1 The proportion of people aged over 16 within 15, 30, 45, 60, and 90 minutes travel time threshold(s) of a 'Key Centre' (as defined by the Regional Transport Consortia) between 7 a.m. and 9 a.m. on a Tuesday (iii. by walking)



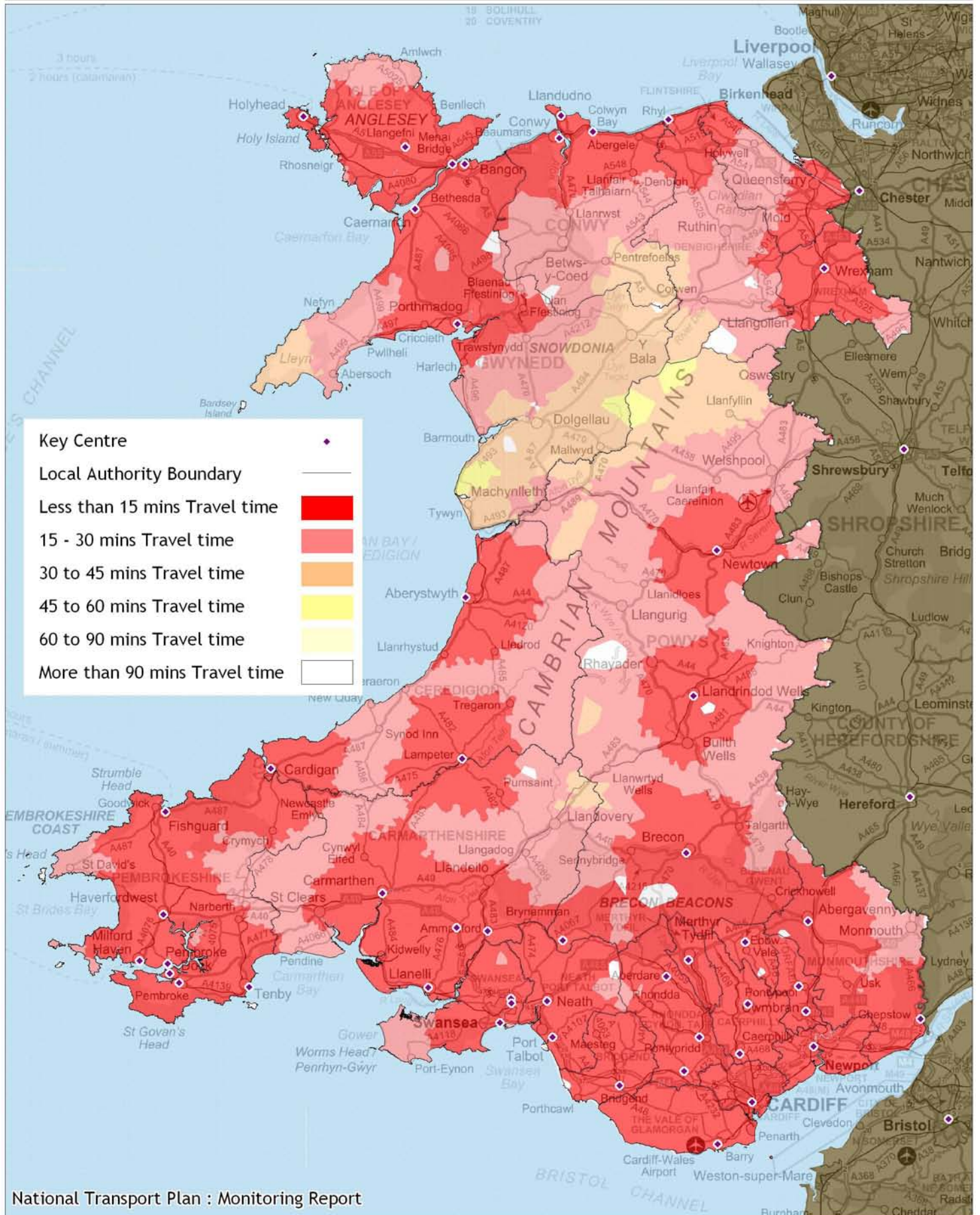
This map is based upon the Ordnance Survey material with the permission of Ordnance Survey on behalf of The Controller of Her Majesty's Stationery Office, © Crown copyright 2010. Unauthorised reproduction infringes Crown copyright and may lead to prosecution or civil proceedings. Welsh Assembly Government. Licence Number: 100017916
 Mae'r map hwn yn seiliedig ar ddeunydd yr Arolwg Ordnans gyda chaniatâd Arolwg Ordnans ar ran Rheolwr Llyfrfa Ei Mawrhydi, © Hawffrwynt y Goron 2010.
 Mae atgynhyrchu heb ganiatâd yn torri hawffrwynt y Goron a gall hyn arwain at erlyniad neu achos sifil. Llywodraeth Cynulliad Cymru. Rhif trwydded 100017916.

6.1 The proportion of people aged over 16 within 15, 30, 45, 60, and 90 minutes travel time threshold(s) of a 'Key Centre' (as defined by the Regional Transport Consortia) between 7 a.m. and 9 a.m. on a Tuesday (i. by public transport)



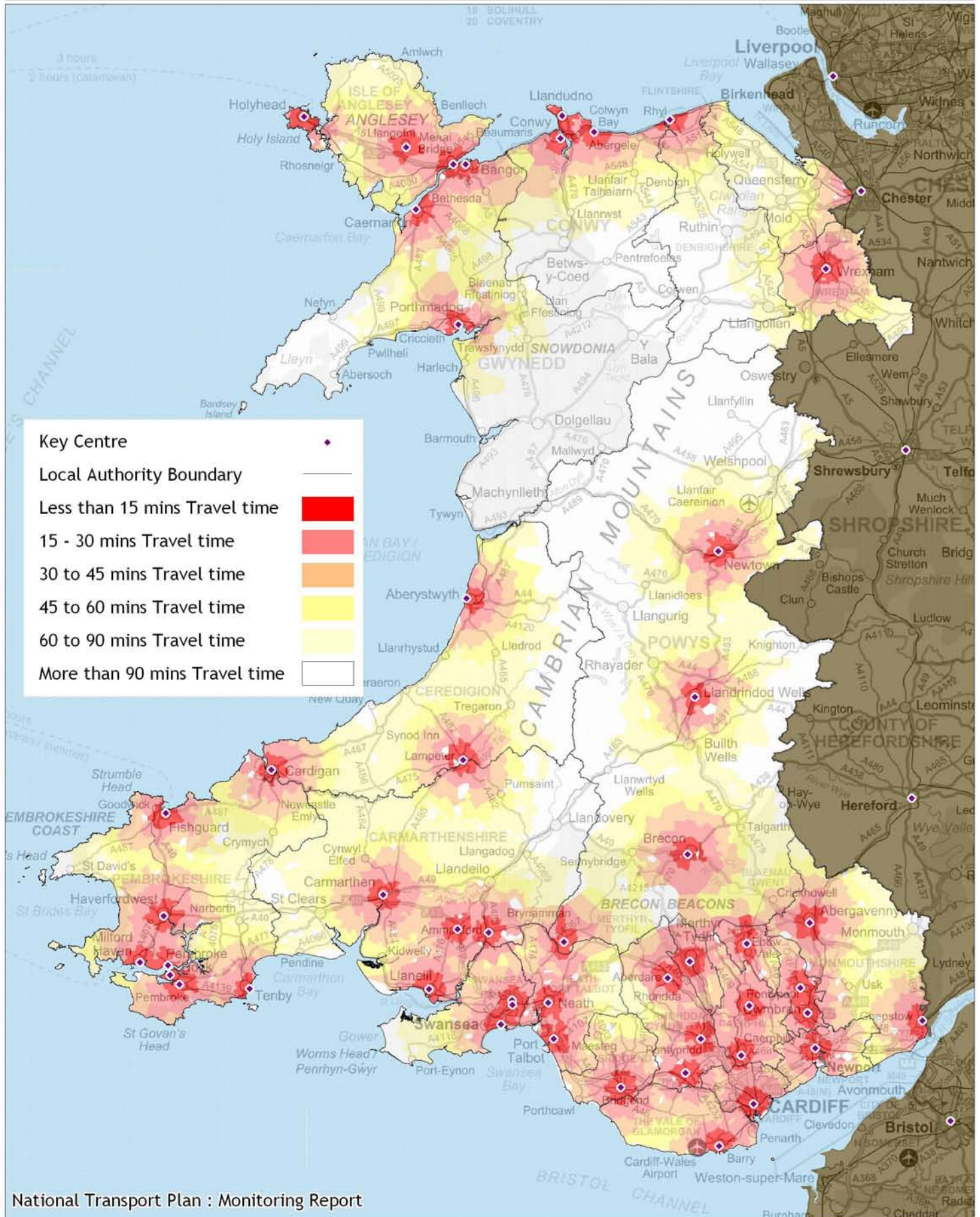
This map is based upon the Ordnance Survey material with the permission of Ordnance Survey on behalf of The Controller of Her Majesty's Stationery Office, © Crown copyright 2010. Unauthorised reproduction infringes Crown copyright and may lead to prosecution or civil proceedings. Welsh Assembly Government. Licence Number: 100017916
 Mae'r map hwn yn seiliedig ar ddeunydd yr Arolwg Ordnans gyda chaniatâd Arolwg Ordnans ar ran Rheolwr Llyfrfa Ei Mawrhydi, © Hawffraint y Goron 2010.
 Mae atgynhyrchu heb ganiatâd yn torri hawffraint y Goron a gall hyn arwain at erlyniad neu achos sifil. Llywodraeth Cynulliad Cymru. Rhif trwydded 100017916.

6.1 The proportion of people over-16 within 15, 30, 45, 60, and 90 minutes travel time threshold(s) of a 'Key Centre' (as defined by the Regional Transport Consortia) between 7 a.m. and 9 a.m. on a Tuesday (ii. by car)



This map is based upon the Ordnance Survey material with the permission of Ordnance Survey on behalf of The Controller of Her Majesty's Stationery Office, © Crown copyright 2010. Unauthorised reproduction infringes Crown copyright and may lead to prosecution or civil proceedings. Welsh Assembly Government. Licence Number: 100017916
 Mae'r map hwn yn seiliedig ar ddeunydd yr Arolwg Ordnans gyda chaniatâd Arolwg Ordnans ar ran Rheolwr Llyfrfa Ei Mawrhydi, © Hawlfraint y Goron 2010.
 Mae atgynhyrchu heb ganiatâd yn torri hawlfraint y Goron a gall hyn arwain at erlyniad neu achos sifil. Llywodraeth Cynulliad Cymru. Rhif trwydded 100017916.

6.1 The proportion of people aged over 16 within 15, 30, 45, 60, and 90 minutes travel time threshold(s) of a 'Key Centre' (as defined by the Regional Transport Consortia) between 7 a.m. and 9 a.m. on a Tuesday (iii. by cycling)



This map is based upon the Ordnance Survey material with the permission of Ordnance Survey on behalf of The Controller of Her Majesty's Stationery Office, © Crown copyright 2010. Unauthorised reproduction infringes Crown copyright and may lead to prosecution or civil proceedings. Welsh Assembly Government. Licence Number: 100017916
 Mae'r map hwn yn seiliedig ar ddeunydd yr Arolwg Ordnans gyda chaniatâd Arolwg Ordnans ar ran Rheolwr Llyfrfa Ei Mawrhydi, © Hawffrwynt y Goron 2010.
 Mae atgynhyrchu heb ganiatâd yn torri hawffrwynt y Goron a gall hyn arwain at erlyniad neu achos sifil. Llywodraeth Cynulliad Cymru. Rhif trwydded 100017916.