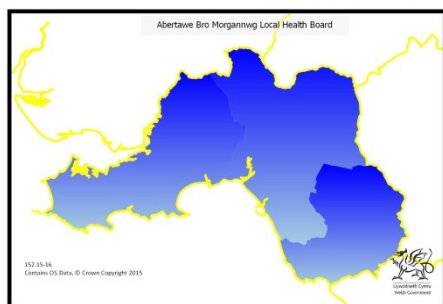


ABERTAWE BRO MORGANNWG HEALTH BOARD PROFILE



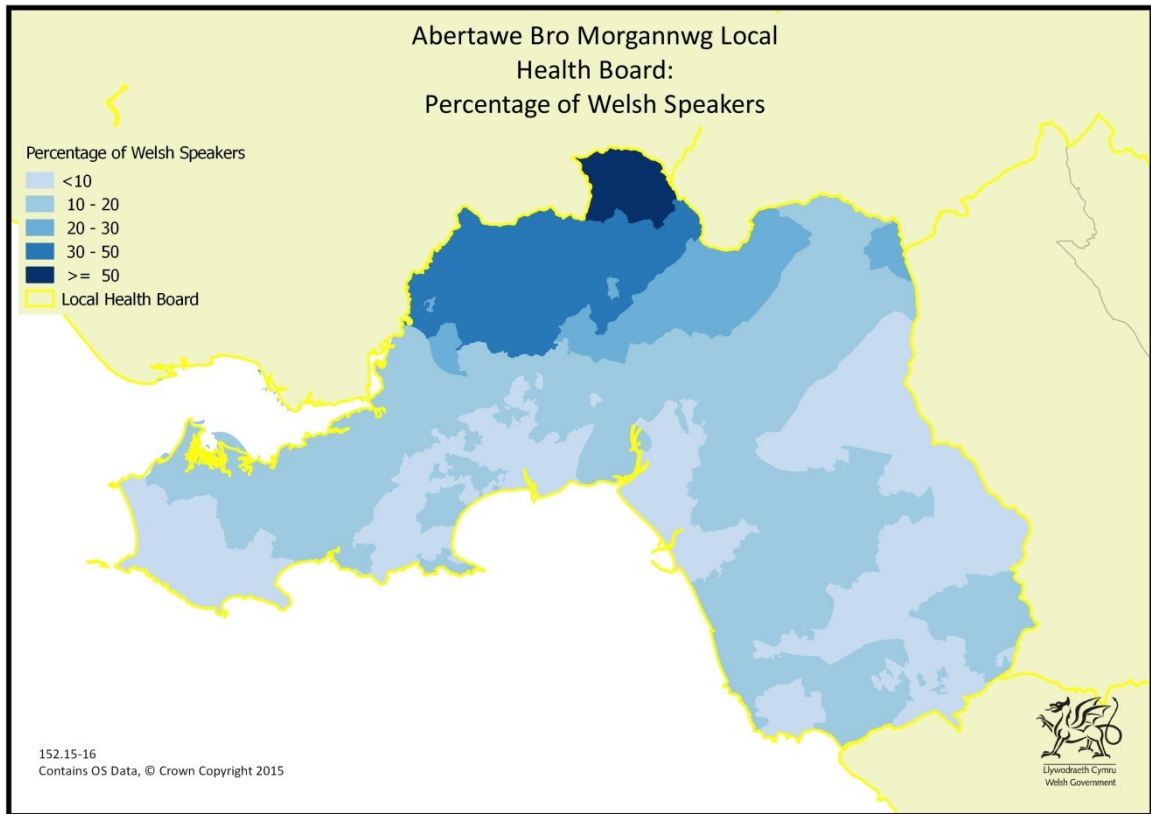
Abertawe Bro Morgannwg Health Board is made up of 3 local authorities:

- Swansea
- Neath Port Talbot
- Bridgend

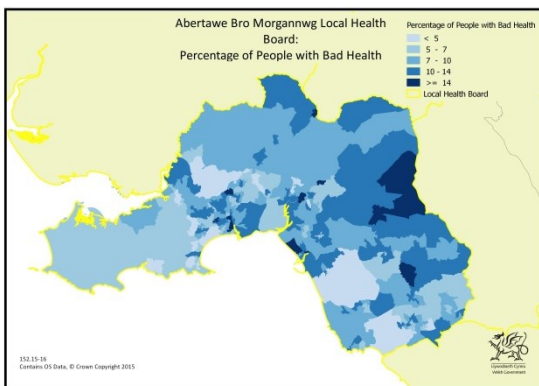
It has an area of 1,070 km² with a population density of 490 people/km².

Table 1
summary statistics for Abertawe Bro Morgannwg Health Board

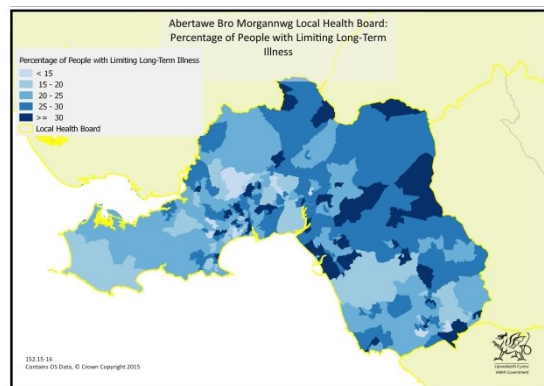
Abertawe Bro Morgannwg Health Board	
population (2014 mid-year estimate)	523,000
number of Welsh speakers	60,100
percentage Welsh speakers	12.0%
percentage of Welsh speakers ...	
... who are fluent	33%
... who speak Welsh daily	32%
... who are most comfortable using Welsh	5%
... who prefer to use Welsh when dealing with health staff	6%
... who prefer Welsh or have no preference (with health staff)	19%
... who used Welsh with health staff in the last 12 months	14%
population aged 75 or over (2014 mid-year estimate)	46,300
percentage aged 75 or over	8.8%
percentage aged 75 or over and can speak Welsh	12.9%
GPs per 10,000 population	6.6
Welsh speaking GPs per 10,000 population	1.1
Welsh speaking GPs per 10,000 Welsh speaking population	9.5
dentists per 10,000 population	7.2
number of community pharmacists	125
number of ophthalmic practitioners	116
number of midwives	351
number of health visitors	207
number of district nurses	77
percentage with a limiting long-term illness (LLTI)	24.9%
percentage with a LLTI (limited a lot) and can speak Welsh	8.8%
percentage with bad health	8.9%
percentage with bad health and can speak Welsh	7.7%



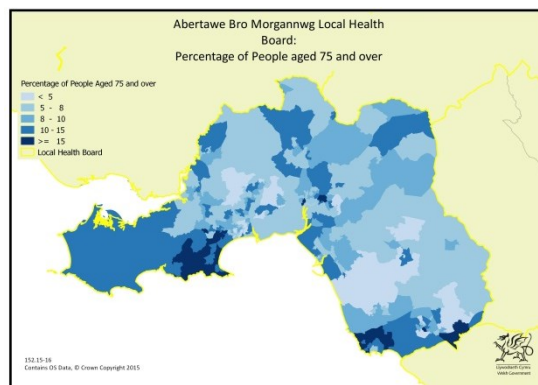
percentage of Welsh speakers



percentage of people with bad health



percentage of people with a limiting long-term illness



percentage of people aged 75 and over

Table 2
summary statistics for the local authorities that make up
Abertawe Bro Morgannwg Health Board

	Swansea	Neath Port Talbot	Bridgend
population	231,200	135,300	134,500
number of Welsh speakers	26,300	20,700	13,100
% of Welsh speakers	11%	15%	10%
% of Welsh speakers ...			
... who are fluent	29%	41%	31%
... speaking Welsh daily	23%	48%	31%
people with an LLTI	23%	28%	25%
% of people with bad health	8%	10%	9%
% of people aged 75 or over	9%	9%	8%
% of people with an LLTI			
and can speak Welsh	9%	12%	4%
% of people with bad health			
and can speak Welsh	8%	12%	4%
% of children aged 3 to 15			
and can speak Welsh	24%	31%	25%
% of people aged over 75			
and can speak Welsh	14%	18%	6%
Welsh speaking GPs			
per 10,000 population	1.6	1.0	0.4
Welsh speaking GPs			
per 10,000			
Welsh speaking population	14.4	6.8	3.8

Table 3
Welsh speaking ability of people working in a range of health-related professions,
in the human health and social work activities industry,
Abertawe Bro Morgannwg ULHB, 2011

occupation	total number	number who can speak Welsh	percentage who can speak Welsh
health and social services managers and directors	679	77	11.3%
managers and proprietors in health and care services	545	53	9.7%
medical practitioners	1,456	158	10.9%
psychologists	78	8	
pharmacists	101	20	19.8%
(others working in the retail industry) ophthalmic opticians	4	0	
dental practitioners	264	39	14.8%
medical radiographers	251	35	13.9%
podiatrists	88	9	
health professionals n.e.c.	151	13	8.6%
physiotherapists	269	39	14.5%
occupational therapists	220	23	10.5%
speech and language therapists	61	10	16.4%
therapy professionals n.e.c.	81	6	
nurses	5,441	541	9.9%
midwives	313	39	12.5%
paramedics	174	14	8.0%
dispensing opticians	0	0	
pharmaceutical technicians	99	6	
medical and dental technicians	150	10	6.7%
health associate professionals n.e.c.	103	17	16.5%
secretarial and related occupations	1,507	121	8.0%
nursing auxiliaries and assistants	2,243	189	8.4%
ambulance staff (excluding paramedics)	176	25	14.2%
dental nurses	413	52	12.6%

source: 2011 Census

Percentages are not shown for small numbers.

The data for the local authorities which make up Abertawe Bro Morgannwg ULHB are given in tables 4 to 6.

Table 4
Welsh speaking ability of people working in a range of health-related professions,
in the human health and social work activities industry,
Swansea, 2011

occupation	total number	number who can speak Welsh	percentage who can speak Welsh
health and social services managers and directors	332	36	10.8%
managers and proprietors in health and care services	245	19	7.8%
medical practitioners	994	109	11.0%
psychologists	46	6	
pharmacists	60	14	23.3%
(others working in the retail industry) ophthalmic opticians	1	0	
dental practitioners	167	19	11.4%
medical radiographers	132	20	15.2%
podiatrists	48	7	
health professionals n.e.c.	84	7	
physiotherapists	164	24	14.6%
occupational therapists	102	10	9.8%
speech and language therapists	32	6	
therapy professionals n.e.c.	49	5	
nurses	2,561	270	10.5%
midwives	125	12	9.6%
paramedics	71	8	
(classified as in the retail industry) dispensing opticians	0	0	
pharmaceutical technicians	49	3	
medical and dental technicians	72	4	
health associate professionals n.e.c.	57	6	
secretarial and related occupations	769	48	6.2%
nursing auxiliaries and assistants	959	70	7.3%
ambulance staff (excluding paramedics)	87	9	
dental nurses	180	20	11.1%

source: 2011 Census

Percentages are not shown for small numbers.

Table 5
Welsh speaking ability of people working in a range of health-related professions,
in the human health and social work activities industry,
Neath Port Talbot, 2011

occupation	total number	number who can speak Welsh	percentage who can speak Welsh
health and social services managers and directors	170	27	15.9%
managers and proprietors in health and care services	165	22	13.3%
medical practitioners	167	27	16.2%
psychologists	23	2	
pharmacists	17	3	
(others working in the retail industry) ophthalmic opticians	1	0	
dental practitioners	40	13	32.5%
medical radiographers	53	7	
podiatrists	13	2	
health professionals n.e.c.	36	3	
physiotherapists	48	8	
occupational therapists	53	7	
speech and language therapists	10	2	
therapy professionals n.e.c.	15	1	
nurses	1,284	169	13.2%
midwives	72	13	18.1%
paramedics	54	4	
(classified as in the retail industry) dispensing opticians	0	0	
pharmaceutical technicians	23	2	
medical and dental technicians	38	4	
health associate professionals n.e.c.	26	6	
secretarial and related occupations	362	50	13.8%
nursing auxiliaries and assistants	602	75	12.5%
ambulance staff (excluding paramedics)	58	14	24.1%
dental nurses	139	25	18.0%

source: 2011 Census

Percentages are not shown for small numbers.

Table 6
Welsh speaking ability of people working in a range of health-related professions,
in the human health and social work activities industry,
Bridgend, 2011

occupation	total number	number who can speak Welsh	percentage who can speak Welsh
health and social services managers and directors	177	14	7.9%
managers and proprietors in health and care services	135	12	8.9%
medical practitioners	295	22	7.5%
psychologists	9	0	
pharmacists	24	3	
(others working in the retail industry) ophthalmic opticians	2	0	
dental practitioners	57	7	
medical radiographers	66	8	
podiatrists	27	0	
health professionals n.e.c.	31	3	
physiotherapists	57	7	
occupational therapists	65	6	
speech and language therapists	19	2	
therapy professionals n.e.c.	17	0	
nurses	1,596	102	6.4%
midwives	116	14	12.1%
paramedics	49	2	
(classified as in the retail industry) dispensing opticians	0	0	
pharmaceutical technicians	27	1	
medical and dental technicians	40	2	
health associate professionals n.e.c.	20	5	
secretarial and related occupations	376	23	6.1%
nursing auxiliaries and assistants	682	44	6.5%
ambulance staff (excluding paramedics)	31	2	
dental nurses	94	7	

source: 2011 Census

Percentages are not shown for small numbers.

There are 1,909 Lower Layer Super Output Areas (LSOAs) in Wales each with an average population of around 1500.

Table 7 gives the numbers and percentages of LSOAs for all health boards where more than half of the population speak Welsh and where more than 1 in 5 speak Welsh.

- In 1 per cent of the LSOAs in the Abertawe Bro Morgannwg health board over half the population speak Welsh.
- In 8 per cent of the LSOAs in the Abertawe Bro Morgannwg health board more than 1 in 5 of the population speak Welsh.

table 7

Betsi Cadwaladr	Powys	Hywel Dda	Abertawe Bro Morgannwg	Cwm Taf	Aneurin Bevan	Cardiff & Vale
99 LSOAs	3 LSOAs	75 LSOAs	4 LSOAs	0 LSOAs	0 LSOAs	0 LSOAs
had populations of which more than half were Welsh-speaking, which is						
23%	4%	33%	1%	0%	0%	0%
of all the 423 LSOAs	of all the 79 LSOAs	of all the 229 LSOAs	of all the 327 LSOAs	of all the 190 LSOAs	of all the 368 LSOAs	of all the 293 LSOAs
AND						
204 LSOAs	18 LSOAs	173 LSOAs	27 LSOAs	6 LSOAs	0 LSOAs	10 LSOAs
had populations of which more than 1 in 5 were Welsh-speaking, which is						
48%	23%	76%	8%	3%	0%	3%
of all the LSOAs in the health board						

Table 11 shows and the highest and lowest levels of Welsh speaking for the local authorities in the Abertawe Bro Morgannwg health board. The averages of sets of 10 LSOAs were used so that the results would not be skewed by one or two LSOAs with uncharacteristically high or uncharacteristically low levels of Welsh-speaking.

table 11

average of the percentages of the 10 LSOAS with the ...		
	... highest levels lowest levels ...
	... of Welsh-speaking	
Swansea	27%	5%
Neath Port Talbot	45%	7%
Bridgend	14%	7%