



# Information Management Strategy Calendar



Llywodraeth Cymru  
Welsh Government

## Academic year 2024/2025

Data is an important management tool for schools, local authorities and the Welsh Government. Accurate, up-to-date information can help save time, minimise burdens and inform decisions.

This calendar is designed to help you plan your data management, alerting you to key dates for statutory returns and reporting arrangements.

For information on school qualifications outcomes data, please visit [gov.wales/school-performance-measurement](https://gov.wales/school-performance-measurement)

For information on the post-16 consistent measures, please visit  
[hwb.gov.wales/playlists/view/dcd4b8f7-f5cf-4789-8e70-f6751bfa46bc/en/1](https://hwb.gov.wales/playlists/view/dcd4b8f7-f5cf-4789-8e70-f6751bfa46bc/en/1)

All dates for statistical bulletins below are provisional. Exact publication dates will be confirmed at  
[gov.wales/statistics-and-research/upcoming](https://gov.wales/statistics-and-research/upcoming)

An electronic version of this calendar is available at [www.gov.wales/information-and-data-collection-calendar](https://www.gov.wales/information-and-data-collection-calendar).  
These scheduled dates may be subject to change and any future updates or corrections will be made to the electronic version only.

For data-related queries, e-mail us at [IMS@gov.wales](mailto:IMS@gov.wales) or visit [gov.wales](https://gov.wales)  
Curriculum for Wales information can be found at: [www.educationwales.blog.gov.wales/](https://www.educationwales.blog.gov.wales/), [www.hwb.gov.wales/](https://www.hwb.gov.wales/),  
[www.twitter.com/WG\\_Education](https://www.twitter.com/WG_Education), [www.facebook.com/educationwales](https://www.facebook.com/educationwales), [www.gov.wales/education-changing](https://www.gov.wales/education-changing),  
[www.spreaker.com/show/addsyg-cymru-education-wales](https://www.spreaker.com/show/addsyg-cymru-education-wales) and [www.youtube.com/@AddysgCymruEducationWales/](https://www.youtube.com/@AddysgCymruEducationWales/)  
Subscribe to the Dysg newsletter at [gov.wales/education-and-skills-planning-and-strategy](https://gov.wales/education-and-skills-planning-and-strategy)



# September 2024

M	T	W	T	F	S	S
						1
2	3	4	5	6	7	8
9	10	11	12	13	14	15
16	17	18	19	20	21	22
23	24	25	26	27	28	29
30						

**This month**

Don't forget to issue a **privacy notice** to all new entrants and a data checking form to all pupils and workforce members.

**This month**

**Data packs Release 1.** Includes secondary contextual data.

**10/09/2024**

DEWi goes live for schools to upload **Post-16** collection 2023/2024 data to the Welsh Government.

**15/09/2024**

The submission of **primary school attendance** data to the Welsh Government is due. Your local authority will advise you of their deadline.

## Reminders

- Have you submitted your **primary school attendance data** to DEWi for consideration by your local authority?
- Have you updated your Management Information System (MIS) and run the Hwb provisioning tool in preparation for the **Personalised Assessments**? To enable the system to operate, your school's data must be up-to-date.
- While updating your MIS, being mindful of UK GDPR, please ensure that you remove and/or do not import any CTFs for pupils who have not ended up being admitted to your school.
- Why not run your annual routine data checking exercise in plenty of time for the **School Workforce Annual Census (SWAC)**?



For data-related queries, e-mail us at [IMS@gov.wales](mailto:IMS@gov.wales) or visit [gov.wales](http://gov.wales)

Curriculum for Wales information can be found at: [www.educationwales.blog.gov.wales/](http://www.educationwales.blog.gov.wales/), [www.hwb.gov.wales/](http://www.hwb.gov.wales/), [www.twitter.com/WG\\_Education](https://www.twitter.com/WG_Education), [www.facebook.com/educationwales](https://www.facebook.com/educationwales), [www.gov.wales/education-changing](http://www.gov.wales/education-changing), [www.spreaker.com/show/addsyg-cymru-education-wales](https://www.spreaker.com/show/addsyg-cymru-education-wales) and [www.youtube.com/@AddysgCymruEducationWales/](https://www.youtube.com/@AddysgCymruEducationWales/)  
Subscribe to the Dysg newsletter at [gov.wales/education-and-skills-planning-and-strategy](http://gov.wales/education-and-skills-planning-and-strategy)



# October 2024

M	T	W	T	F	S	S	This month	
	1	2	3	4	5	6		Publication of the <b>Permanent and fixed-term exclusions from schools: September 2022 to August 2023</b> statistical release.
7	8	9	10	11	12	13	01/10/2024	Publication of the <b>Absenteeism from secondary schools: September 2023 to August 2024</b> statistical release.
14	15	16	17	18	19	20	03/10/2024	Publication of the <b>Examination results: September 2023 to August 2024 (provisional)</b> statistical release.
21	22	23	24	25	26	27	04/10/2024	Provisional candidate reports will be provided for validation purposes via DEWi.
28	29	30	31				04/10/2024	The submission of <b>Post-16</b> data to the Welsh Government is due. Your local authority will advise you of their deadline.
							13/10/2024	Final deadline for submission of amended <b>primary attendance</b> data following the validation period. Your local authority will advise you of their deadline.

## Reminders

- Have you submitted your **Post-16** collection data to DEWi yet for consideration by your local authority?
- **Personalised Assessments:** have you signed the Headteacher agreement and allocated system functions to your teaching team for this year?
- Why not run your annual routine data checking exercise in plenty of time for the **PLASC?**



For data-related queries, e-mail us at [IMS@gov.wales](mailto:IMS@gov.wales) or visit [gov.wales](http://gov.wales)  
 Curriculum for Wales information can be found at: [www.educationwales.blog.gov.wales/](http://www.educationwales.blog.gov.wales/), [www.hwb.gov.wales/](http://www.hwb.gov.wales/),  
[www.twitter.com/WG\\_Education](https://www.twitter.com/WG_Education), [www.facebook.com/educationwales](https://www.facebook.com/educationwales), [www.gov.wales/education-changing](http://www.gov.wales/education-changing),  
[www.spreaker.com/show/addsyg-cymru-education-wales](https://www.spreaker.com/show/addsyg-cymru-education-wales) and [www.youtube.com/@AddysgCymruEducationWales/](https://www.youtube.com/@AddysgCymruEducationWales/)  
 Subscribe to the Dysg newsletter at [gov.wales/education-and-skills-planning-and-strategy](http://gov.wales/education-and-skills-planning-and-strategy)



# November 2024

M	T	W	T	F	S	S
				1	2	3
4	5	6	7	8	9	10
11	12	13	14	15	16	17
18	19	20	21	22	23	24
25	26	27	28	29	30	

## This month

**Data packs Release 2.** Includes provisional KS4 qualifications outcomes, secondary contextual and secondary attendance data.

## This month

**My Local School** updated with available contextual and finance data.

05/11/2024

**SWAC** census day: DEWi goes live for data to be uploaded to the Welsh Government.

08/11/2024

Second provisional candidate reports will be provided for validation purposes via DEWi.

w/c 11/11/2024

**Anti-bullying Week\***

w/c 11/11/2024

**National Safeguarding Week\*\***

w/c 25/11/2024

Final candidate reports will be provided via DEWi, together with a final SSSP (in the form of a direct link to My Local School and supporting text).

## Related links

- \* *Anti-bullying Week:* [www.anti-bullyingalliance.org.uk/anti-bullying-week-2024-choose-respect/anti-bullying-week-2024-choose-respect](http://www.anti-bullyingalliance.org.uk/anti-bullying-week-2024-choose-respect/anti-bullying-week-2024-choose-respect)
- \*\* *National Safeguarding Week:* [www.safeguardingboard.wales/find-your-board/](http://www.safeguardingboard.wales/find-your-board/)



For data-related queries, e-mail us at [IMS@gov.wales](mailto:IMS@gov.wales) or visit [gov.wales](http://gov.wales)

Curriculum for Wales information can be found at: [www.educationwales.blog.gov.wales/](http://www.educationwales.blog.gov.wales/), [www.hwb.gov.wales/](http://www.hwb.gov.wales/), [www.twitter.com/WG\\_Education](https://www.twitter.com/WG_Education), [www.facebook.com/educationwales](https://www.facebook.com/educationwales), [www.gov.wales/education-changing](http://www.gov.wales/education-changing), [www.spreaker.com/show/addsyg-cymru-education-wales](https://www.spreaker.com/show/addsyg-cymru-education-wales) and [www.youtube.com/@AddysgCymruEducationWales/](https://www.youtube.com/@AddysgCymruEducationWales/)  
Subscribe to the Dysg newsletter at [gov.wales/education-and-skills-planning-and-strategy](http://gov.wales/education-and-skills-planning-and-strategy)



# December 2024

M	T	W	T	F	S	S	This month	
						1	This month	Data packs Release 3: Includes final KS4 qualifications outcomes.
2	3	4	5	6	7	8		
9	10	11	12	13	14	15	05/12/2024	Publication of the <b>Absenteeism from primary schools: September 2023 to August 2024</b> statistical release.
16	17	18	19	20	21	22	18/12/2024	Publication of the <b>Examination results: September 2023 to August 2024 (final)</b> statistical release.
23	24	25	26	27	28	29	25/12/2024	DEWi closes and the submission of the <b>SWAC</b> data is due. Christmas Day.
30	31						26/12/2024	Boxing Day.

## Notes



For data-related queries, e-mail us at [IMS@gov.wales](mailto:IMS@gov.wales) or visit [gov.wales](http://gov.wales)  
 Curriculum for Wales information can be found at: [www.educationwales.blog.gov.wales/](http://www.educationwales.blog.gov.wales/), [www.hwb.gov.wales/](http://www.hwb.gov.wales/),  
[www.twitter.com/WG\\_Education](https://www.twitter.com/WG_Education), [www.facebook.com/educationwales](https://www.facebook.com/educationwales), [www.gov.wales/education-changing](http://www.gov.wales/education-changing),  
[www.spreaker.com/show/addsyg-cymru-education-wales](https://www.spreaker.com/show/addsyg-cymru-education-wales) and [www.youtube.com/@AddysgCymruEducationWales/](https://www.youtube.com/@AddysgCymruEducationWales/)  
 Subscribe to the Dysg newsletter at [gov.wales/education-and-skills-planning-and-strategy](http://gov.wales/education-and-skills-planning-and-strategy)



# January 2025

M	T	W	T	F	S	S	This month
		1	2	3	4	5	<b>01/01/2025</b>
6	7	8	9	10	11	12	<b>21/01/2025</b>
13	14	15	16	17	18	19	
20	21	22	23	24	25	26	
27	28	29	30	31			

**My Local School** updated with KS4 qualifications outcomes data and secondary attendance data.

UK Bank Holiday: New Year's Day.

**PLASC** and **Educated Otherwise Than At School (EOTAS)** census day: DEWi goes live for schools to upload PLASC data to the Welsh Government.

## Reminder

- Have you updated your Management Information System (MIS) and run the Hwb provisioning tool in preparation for the **Personalised Assessments**? To enable the system to operate, your school's data must be up-to-date.
- Don't forget the **Personalised Assessments** can be taken at any time during the school year.

## Notes



For data-related queries, e-mail us at [IMS@gov.wales](mailto:IMS@gov.wales) or visit [gov.wales](http://gov.wales)  
 Curriculum for Wales information can be found at: [www.educationwales.blog.gov.wales/](http://www.educationwales.blog.gov.wales/), [www.hwb.gov.wales/](http://www.hwb.gov.wales/),  
[www.twitter.com/WG\\_Education](https://www.twitter.com/WG_Education), [www.facebook.com/educationwales](https://www.facebook.com/educationwales), [www.gov.wales/education-changing](http://www.gov.wales/education-changing),  
[www.spreaker.com/show/addsyg-cymru-education-wales](https://www.spreaker.com/show/addsyg-cymru-education-wales) and [www.youtube.com/@AddysgCymruEducationWales/](https://www.youtube.com/@AddysgCymruEducationWales/)  
 Subscribe to the Dysg newsletter at [gov.wales/education-and-skills-planning-and-strategy](http://gov.wales/education-and-skills-planning-and-strategy)



# February 2025

M	T	W	T	F	S	S
					1	2
3	4	5	6	7	8	9
10	11	12	13	14	15	16
17	18	19	20	21	22	23
24	25	26	27	28		

## Reminder

- Have you submitted your **PLASC** data to DEWi yet for consideration by your local authority?

## Notes



For data-related queries, e-mail us at [IMS@gov.wales](mailto:IMS@gov.wales) or visit [gov.wales](http://gov.wales)  
Curriculum for Wales information can be found at: [www.educationwales.blog.gov.wales/](http://www.educationwales.blog.gov.wales/), [www.hwb.gov.wales/](http://www.hwb.gov.wales/),  
[www.twitter.com/WG\\_Education](https://www.twitter.com/WG_Education), [www.facebook.com/educationwales](https://www.facebook.com/educationwales), [www.gov.wales/education-changing](http://www.gov.wales/education-changing),  
[www.spreaker.com/show/addsyg-cymru-education-wales](https://www.spreaker.com/show/addsyg-cymru-education-wales) and [www.youtube.com/@AddysgCymruEducationWales/](https://www.youtube.com/@AddysgCymruEducationWales/)  
Subscribe to the Dysg newsletter at [gov.wales/education-and-skills-planning-and-strategy](http://gov.wales/education-and-skills-planning-and-strategy)



# March 2025

M	T	W	T	F	S	S
					1	2
3	4	5	6	7	8	9
10	11	12	13	14	15	16
17	18	19	20	21	22	23
24	25	26	27	28	29	30
31						

07/03/2025

**PLASC** and **EOTAS**: the submission of PLASC data to the Welsh Government is due. Your local authority will advise you of their deadline.

## Notes



For data-related queries, e-mail us at [IMS@gov.wales](mailto:IMS@gov.wales) or visit [gov.wales](http://gov.wales)  
Curriculum for Wales information can be found at: [www.educationwales.blog.gov.wales/](http://www.educationwales.blog.gov.wales/), [www.hwb.gov.wales/](http://www.hwb.gov.wales/),  
[www.twitter.com/WG\\_Education](https://www.twitter.com/WG_Education), [www.facebook.com/educationwales](https://www.facebook.com/educationwales), [www.gov.wales/education-changing](http://www.gov.wales/education-changing),  
[www.spreaker.com/show/addsyg-cymru-education-wales](https://www.spreaker.com/show/addsyg-cymru-education-wales) and [www.youtube.com/@AddysgCymruEducationWales/](https://www.youtube.com/@AddysgCymruEducationWales/)  
Subscribe to the Dysg newsletter at [gov.wales/education-and-skills-planning-and-strategy](http://gov.wales/education-and-skills-planning-and-strategy)





# April 2025

M	T	W	T	F	S	S
	1	2	3	4	5	6
7	8	9	10	11	12	13
14	15	16	17	18	19	20
21	22	23	24	25	26	27
28	29	30				

18/04/2025

UK Bank Holiday: Good Friday.

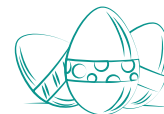
21/04/2025

UK Bank Holiday: Easter Monday.

## Reminder

- Have you updated your Management Information System (MIS) and run the Hwb provisioning tool in preparation for the **Personalised Assessments**?  
To enable the system to operate, your school's data must be up-to-date.
- Don't forget the **Personalised Assessments** can be taken at any time during the school year.

## Notes



For data-related queries, e-mail us at [IMS@gov.wales](mailto:IMS@gov.wales) or visit [gov.wales](http://gov.wales)  
Curriculum for Wales information can be found at: [www.educationwales.blog.gov.wales/](http://www.educationwales.blog.gov.wales/), [www.hwb.gov.wales/](http://www.hwb.gov.wales/),  
[www.twitter.com/WG\\_Education](https://www.twitter.com/WG_Education), [www.facebook.com/educationwales](https://www.facebook.com/educationwales), [www.gov.wales/education-changing](http://www.gov.wales/education-changing),  
[www.spreaker.com/show/addsyg-cymru-education-wales](https://www.spreaker.com/show/addsyg-cymru-education-wales) and [www.youtube.com/@AddysgCymruEducationWales/](https://www.youtube.com/@AddysgCymruEducationWales/)  
Subscribe to the Dysg newsletter at [gov.wales/education-and-skills-planning-and-strategy](http://gov.wales/education-and-skills-planning-and-strategy)



# May 2025

M	T	W	T	F	S	S
			1	2	3	4
5	6	7	8	9	10	11
12	13	14	15	16	17	18
19	20	21	22	23	24	25
26	27	28	29	30		

05/05/2025

26/05/2025

27/05/2025

UK Bank Holiday: Early May.

UK Bank Holiday: Spring.

Attendance collection for secondary schools: DEWi goes live for schools to upload data to the Welsh Government.

## Reminder

- *Hwb Rollover – Hwb news article coming soon outlining school action required to prepare Hwb accounts in readiness for academic year 2024 – 2025.*

## Notes



For data-related queries, e-mail us at [IMS@gov.wales](mailto:IMS@gov.wales) or visit [gov.wales](http://gov.wales)

Curriculum for Wales information can be found at: [www.educationwales.blog.gov.wales/](http://www.educationwales.blog.gov.wales/), [www.hwb.gov.wales/](http://www.hwb.gov.wales/), [www.twitter.com/WG\\_Education](https://twitter.com/WG_Education), [www.facebook.com/educationwales](https://www.facebook.com/educationwales), [www.gov.wales/education-changing](http://www.gov.wales/education-changing), [www.spreaker.com/show/addsyg-cymru-education-wales](https://www.spreaker.com/show/addsyg-cymru-education-wales) and [www.youtube.com/@AddysgCymruEducationWales/](https://www.youtube.com/@AddysgCymruEducationWales/)  
Subscribe to the Dysg newsletter at [gov.wales/education-and-skills-planning-and-strategy](http://gov.wales/education-and-skills-planning-and-strategy)



# June 2025

M	T	W	T	F	S	S	24/06/2025
						1	The submission of <b>secondary school attendance</b> data to the Welsh Government is due. Your local authority will advise you of their deadline.
2	3	4	5	6	7	8	
9	10	11	12	13	14	15	
16	17	18	19	20	21	22	
23	24	25	26	27	28	29	
30							

## Reminder

- Remember to submit your **Common Transfer Files (CTF)** on to the **s2s** secure data transfer site as early as possible for pupils leaving or moving on to secondary school to avoid any upload problems.
- Have you updated your Management Information System (MIS) and run the Hwb provisioning tool in preparation for the **Personalised Assessments**? To enable the system to operate, your school's data must be up-to-date.
- Don't forget the **Personalised Assessments** can be taken at any time during the school year.
- Have you submitted your **secondary school attendance data** to DEWi yet for consideration by your local authority?



For data-related queries, e-mail us at [IMS@gov.wales](mailto:IMS@gov.wales) or visit [gov.wales](http://gov.wales)  
Curriculum for Wales information can be found at: [www.educationwales.blog.gov.wales/](http://www.educationwales.blog.gov.wales/), [www.hwb.gov.wales/](http://www.hwb.gov.wales/),  
[www.twitter.com/WG\\_Education](https://www.twitter.com/WG_Education), [www.facebook.com/educationwales](https://www.facebook.com/educationwales), [www.gov.wales/education-changing](http://www.gov.wales/education-changing),  
[www.spreaker.com/show/addsyg-cymru-education-wales](https://www.spreaker.com/show/addsyg-cymru-education-wales) and [www.youtube.com/@AddysgCymruEducationWales/](https://www.youtube.com/@AddysgCymruEducationWales/)  
Subscribe to the Dysg newsletter at [gov.wales/education-and-skills-planning-and-strategy](http://gov.wales/education-and-skills-planning-and-strategy)



# July 2025

M	T	W	T	F	S	S
	1	2	3	4	5	6
7	8	9	10	11	12	13
14	15	16	17	18	19	20
21	22	23	24	25	26	27
28	29	30	31			

**This month**

**This month**

**21/07/2025**

**21/07/2025**

Publication of the **PLASC 2025** results statistical release.

Publication of the **SWAC 2024** results statistical release.

Final deadline for submission of amended **secondary school attendance** data following the validation period. Your local authority will advise you of their deadline.

DEWi goes live for schools to upload **primary school attendance** data to the Welsh Government. Remember to submit it during September. Your local authority will advise you of their deadline.

## Reminder

- **Personalised assessments** – *Whenever you update your MIS, the data for learners who have left your school will transfer to their new schools and you will no longer have access to it. Remember to save any information you need.*

## Notes



For data-related queries, e-mail us at [IMS@gov.wales](mailto:IMS@gov.wales) or visit [gov.wales](http://gov.wales)  
Curriculum for Wales information can be found at: [www.educationwales.blog.gov.wales/](http://www.educationwales.blog.gov.wales/), [www.hwb.gov.wales/](http://www.hwb.gov.wales/),  
[www.twitter.com/WG\\_Education](https://www.twitter.com/WG_Education), [www.facebook.com/educationwales](https://www.facebook.com/educationwales), [www.gov.wales/education-changing](http://www.gov.wales/education-changing),  
[www.spreaker.com/show/addsyg-cymru-education-wales](https://www.spreaker.com/show/addsyg-cymru-education-wales) and [www.youtube.com/@AddysgCymruEducationWales/](https://www.youtube.com/@AddysgCymruEducationWales/)  
Subscribe to the Dysg newsletter at [gov.wales/education-and-skills-planning-and-strategy](http://gov.wales/education-and-skills-planning-and-strategy)



# August 2025

M	T	W	T	F	S	S
				1	2	3
4	5	6	7	8	9	10
11	12	13	14	15	16	17
18	19	20	21	22	23	24
25	26	27	28	29	30	31

**This month**

**This month**

**25/08/2025**

A level results day.

GCSE results day.

UK Bank Holiday: Summer.

## Reminder

- Have you submitted your **primary school attendance** data to DEWi yet for consideration by your local authority?
- Have you updated your Management Information System (MIS) and run the Hwb provisioning tool in preparation for the **Personalised Assessments?** The Hwb provisioning client must be running regularly throughout the school holidays and, critically, at the start of the new academic year. To enable the system to operate, your school's data must be up-to-date.

## Notes



For data-related queries, e-mail us at [IMS@gov.wales](mailto:IMS@gov.wales) or visit [gov.wales](http://gov.wales)

Curriculum for Wales information can be found at: [www.educationwales.blog.gov.wales/](http://www.educationwales.blog.gov.wales/), [www.hwb.gov.wales/](http://www.hwb.gov.wales/), [www.twitter.com/WG\\_Education](https://twitter.com/WG_Education), [www.facebook.com/educationwales](https://www.facebook.com/educationwales), [www.gov.wales/education-changing](http://www.gov.wales/education-changing), [www.spreaker.com/show/addsyg-cymru-education-wales](https://www.spreaker.com/show/addsyg-cymru-education-wales) and [www.youtube.com/@AddysgCymruEducationWales/](https://www.youtube.com/@AddysgCymruEducationWales/)  
Subscribe to the Dysg newsletter at [gov.wales/education-and-skills-planning-and-strategy](http://gov.wales/education-and-skills-planning-and-strategy)

