

RPW Ar-Lein Online

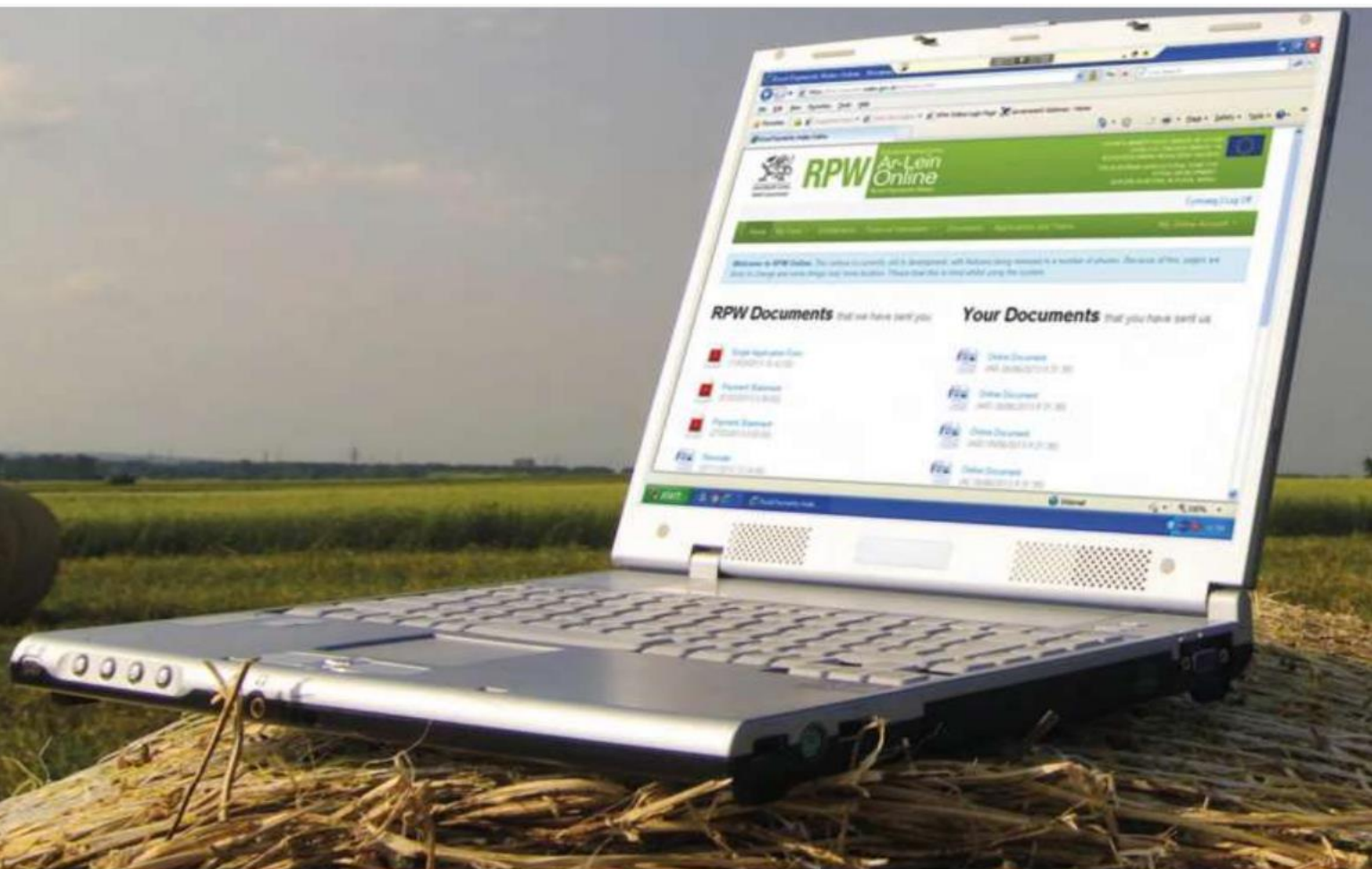
Taliadau Gwledig Cymru
Rural Payments Wales



Llywodraeth Cymru
Welsh Government

www.cymru.gov.uk

A Simple Guide for Customers on How to Download Shapefiles



Digital ISBN 978-1-83625-299-3
© Crown copyright 2024
Version 1 published July 2024

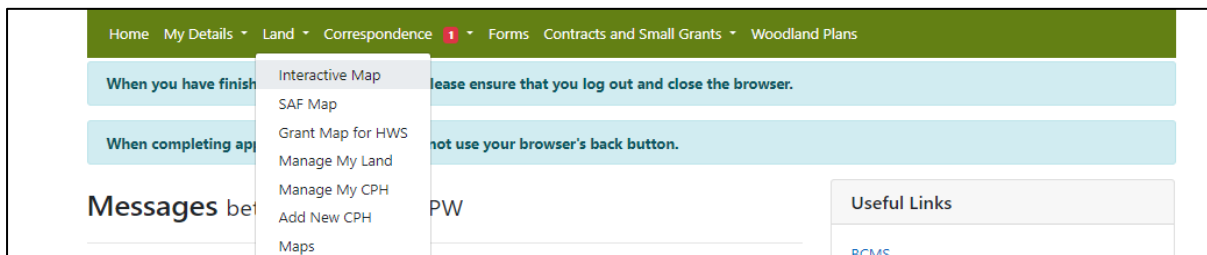
Shapefiles

The purpose of this document is to give you step-by-step instructions on how to download Shapefiles from the Interactive Map on RPW Online.

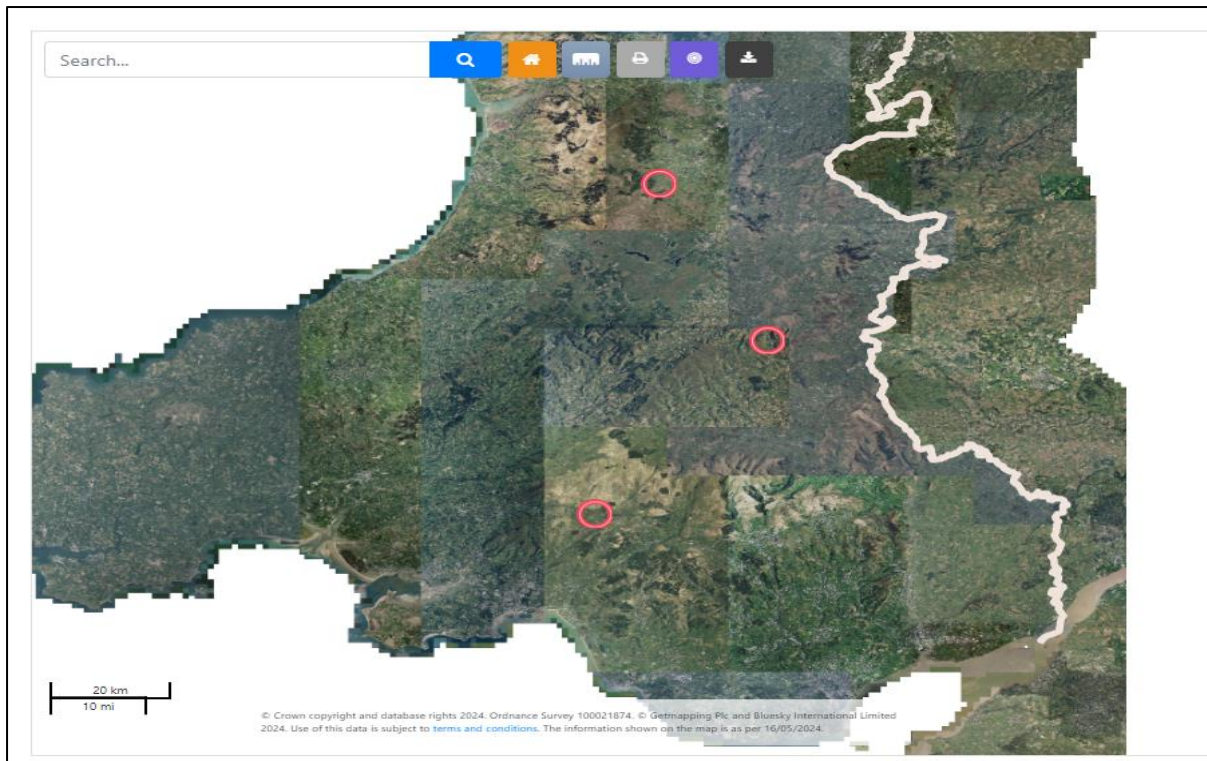
A new functionality has been added to the Interactive Map on RPW Online. This function will allow you to download Shapefile data as a .zipfile for the land that's at your disposal.

The first layer holds details from the Land Parcel Identification System (LPIS) for all field parcels under your holding; the second layer contains the holdings Permanent Feature data.

To download a Shapefile, click on the 'Land' tab and select the **Interactive Map** as shown in the screen print below.



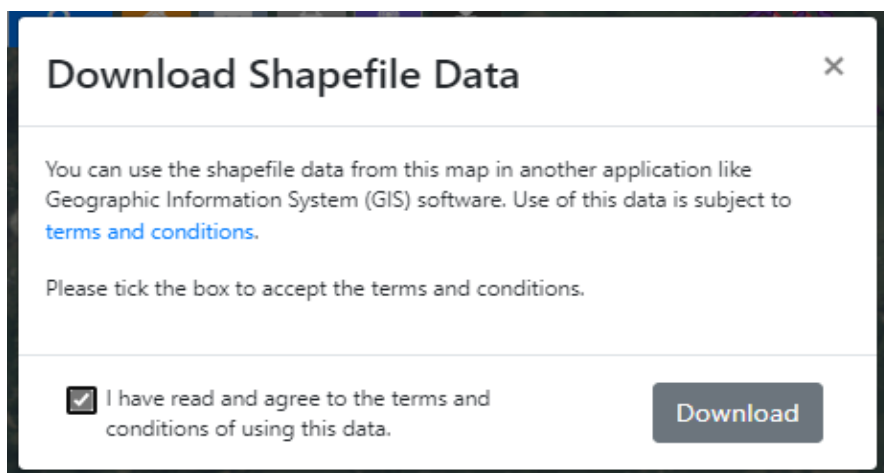
The Interactive Map will open as below as shown in the below screenprint.



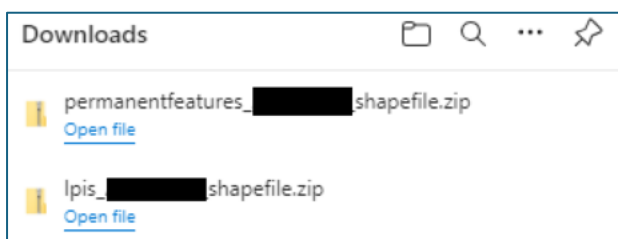
Once the IMV screen has loaded, next to the search bar, you will see a series of icons. Hover over each icon and select '**Download Shapefiles**'.



Upon selecting **Download Shapefiles**, a Terms and Conditions message will be displayed on screen. Please ensure you have read and understood the Terms and Conditions before confirming you agree.



Once confirmed, the **Download** button will become bold and available for you to press. Click **Download**. 2 x Shapefile.zips will be created and appear in the downloads file. They should also appear in a pop-up box in the right-hand top corner of your screen.



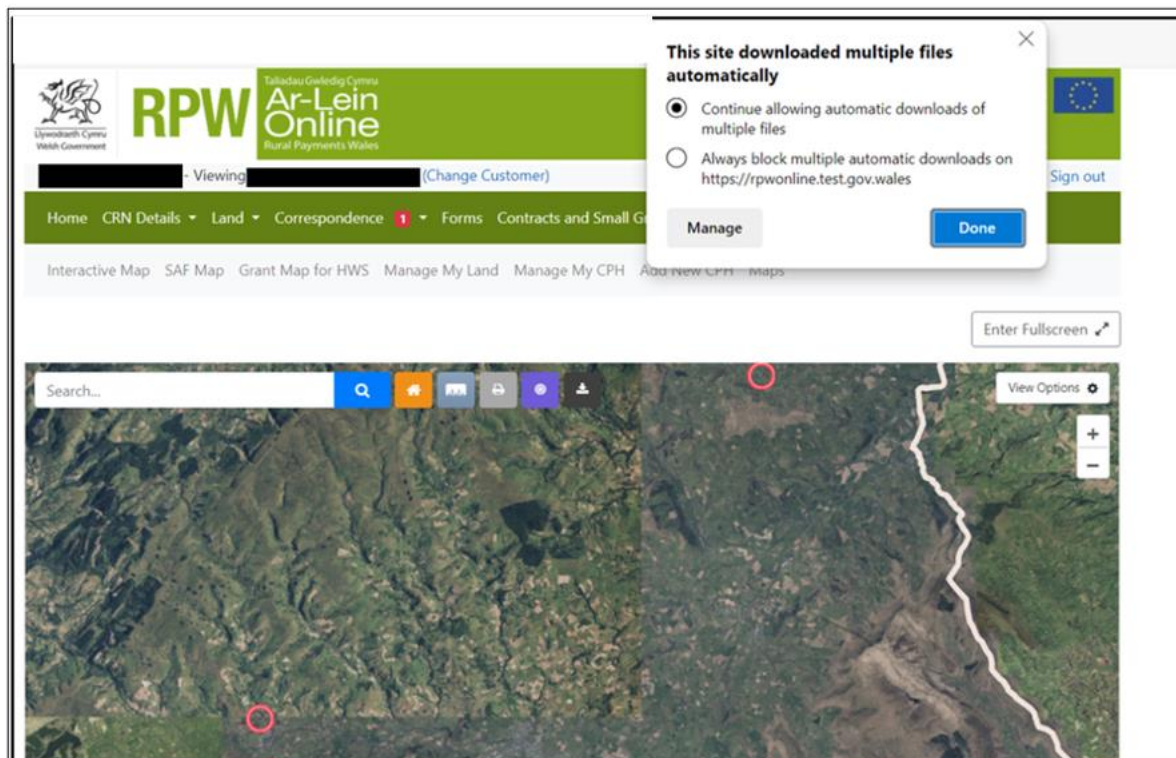
The LPIS shapefile.zip will contain the following data:

Landparcelid
OSSHEET
NGFIELD
FieldSize
FieldName
TenureStatus

The Permanent Feature Shapefile.zip will contain the following:

Permanent Feature Id
Permanent Feature Code
Permanent Feature Area
Land Parcel ID
Isspatial

To be aware, the internet browser may opt to block multiple downloads and a new window could appear on your screen as shown in the below screenprint. Select the 'Continue allowing automatic downloads of multiple files' and press done. Your Shapefile .zips should then appear.



Once the .zip files have been created, you can load the Shapefile data into your own GI Services System.