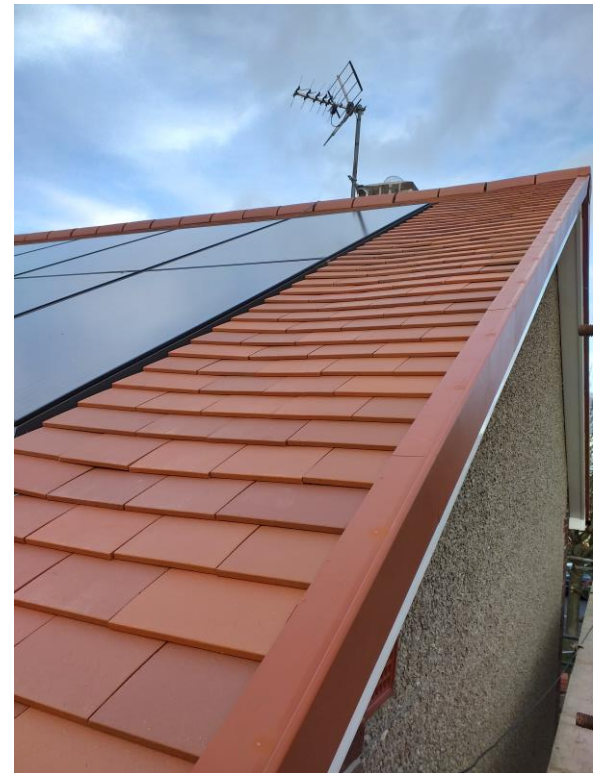


OVERVIEW OF ORP SCHEME

We had a roofing and rendering Capital Works scheme for 55 houses already out for Tender. We requested gap funding to introduce IES, SME training/in-house PAS training, passport and renewable technologies into these houses.

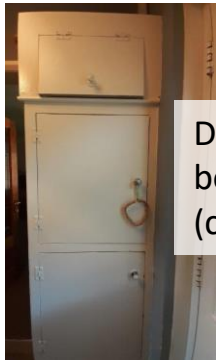


ORP RMI ROOFING AND RENDERING PROGRAMME

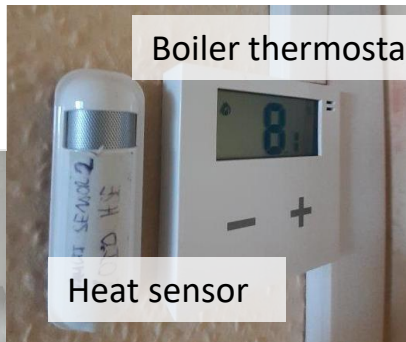
54/56 Ffordd Tŷ Newydd



PV, BATTERY, INVERTER, IES

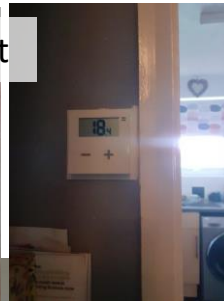


Distribution board (concealed)

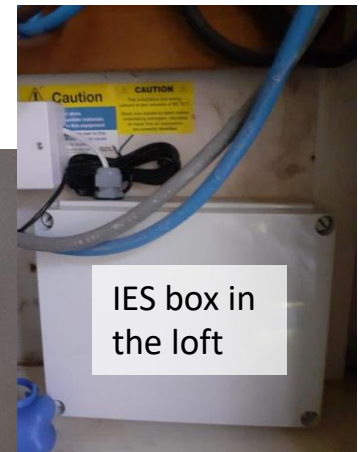


Boiler thermostat

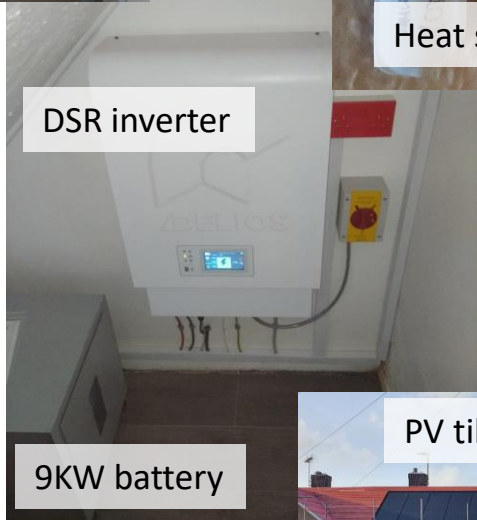
Heat sensor



CO2, heat and humidity sensor in corridor

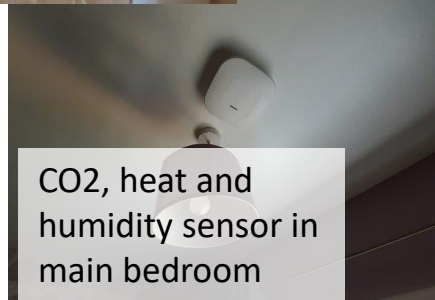


IES box in the loft

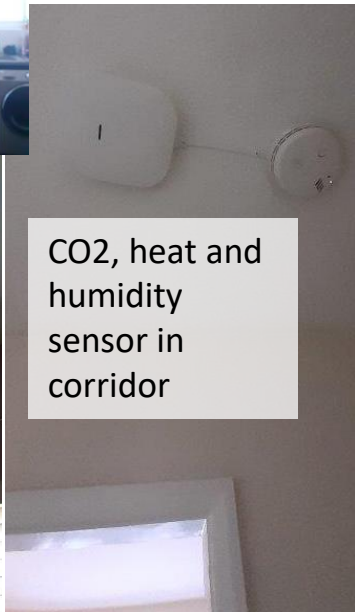


DSR inverter

9KW battery



CO2, heat and humidity sensor in main bedroom



Independent WiFi router/SIM



PV tiles



IES ANALYTIC PERFORMANCE DATA

24 Ffordd Tŷ Newydd – Pre data/measures



IES ANALYTIC PERFORMANCE DATA 24 Ffordd Tŷ Newydd – ORP measures



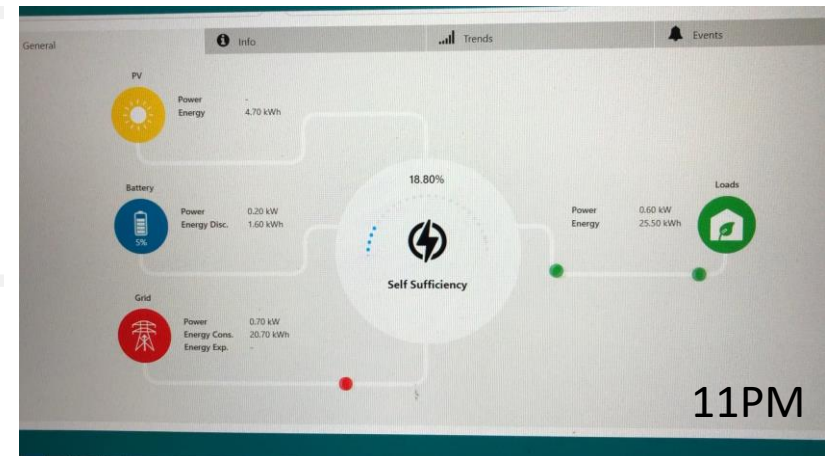
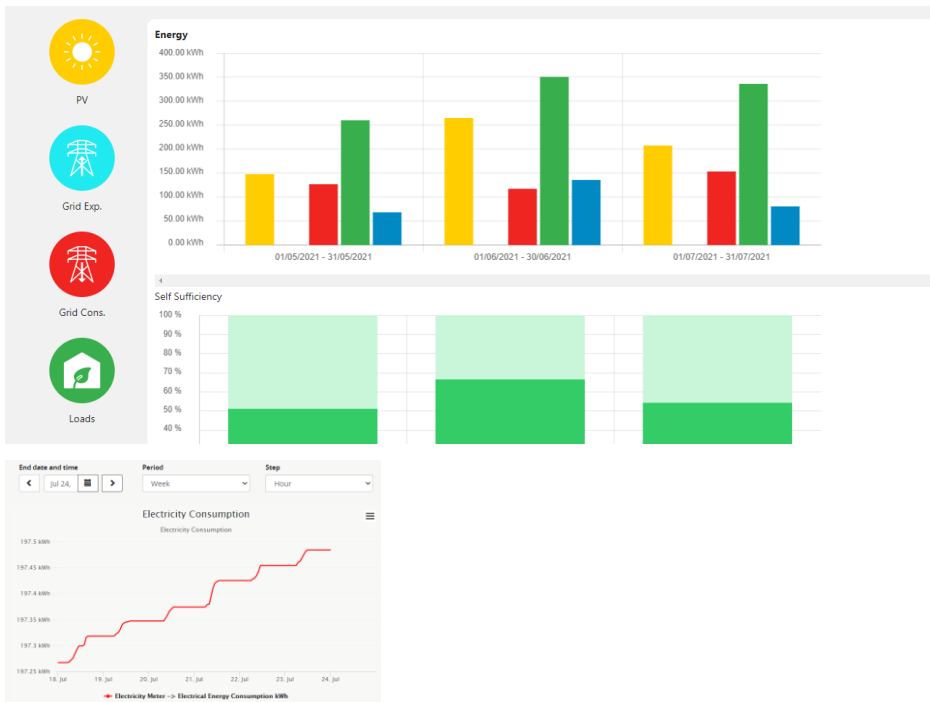
Safe humidity levels:
30-60%

Safe CO2 levels:
400-1000ppm

Ideal internal
temperature level:
(Winter) 17-21°C
(Summer) 23-27°C

IES ANALYTIC PERFORMANCE DATA 24

Ffordd Tŷ Newydd – ORP measures



Evaluation

Carbon emissions

An average household produces	6 tonnes of CO2
This property produces	0.7 tonnes of CO2
This property's potential production	0.3 tonnes of CO2

Energy efficiency rating for this property

This property's current energy rating is A. It has the potential to be A.

[See how to improve this property's energy performance.](#)

Score	Energy rating	Current	Potential
92+	A	92 A	96 A
81-91	B		
69-80	C		
55-68	D		
39-54	E		
21-38	F		
1-20	G		

Energy Performance Certificate (EPC)

43 FFORDD TY NEWYDD
 PRESTATYN
 LL19 8PA

Energy rating
A

valid until
 17 June 2031

Certificate number
 0340-2336-7060-2299-2735

Property type
 Semi-detached house
 Total floor area
 69 square metres

4.2KW of solar panels



Evaluation

Carbon emissions

An average household produces	6 tonnes of CO2
This property produces	1.3 tonnes of CO2
This property's potential production	1.1 tonnes of CO2

Energy Performance Certificate (EPC)

33 FFORDD TY NEWYDD PRESTATYN LL19 8PA	Energy rating B
Valid until 21 June 2031	Certificate number 2295-3001-3206-0049-1200

Property type
End-terrace house
Total floor area
71 square metres

1.8KW of solar panels

Energy efficiency rating for this property

This property's current energy rating is B. It has the potential to be B.

[See how to improve this property's energy performance.](#)

Score	Energy rating	Current	Potential
92+	A		
81-91	B	84 B	86 B
69-80	C		
55-68	D		
39-54	E		
21-38	F		
1-20	G		



Evaluation



Energy Performance Certificate (EPC)

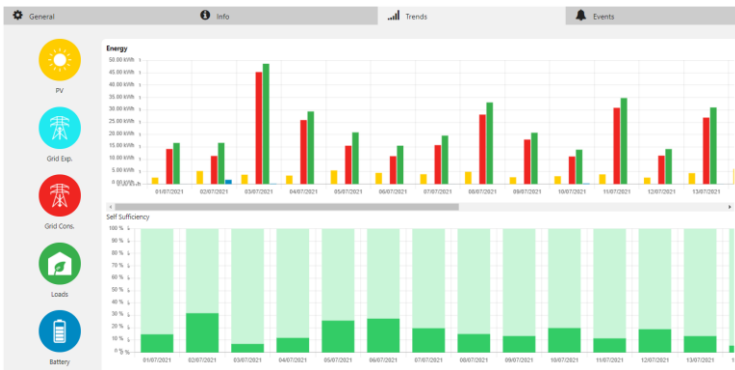
33 FFORDD TY NEWYDD PRESTATYN LL19 8PA		Energy rating B
Valid until 21 June 2031	Certificate number 2295-3001-3206-0049-1200	

Property type
End terrace house
Total floor area
71 square metres

1.8KW (SW/SE) of solar panels



Evaluation



Energy Performance Certificate (EPC)

33 FFORDD TY NEWYDD PRESTATYN LL19 8PA		Energy rating B
Valid until 21 June 2031	Certificate number 2295-3001-3206-0049-1200	

Property type
End-terrace house
Total floor area
71 square metres

1.8KW (SW/SE) of solar panels



Evaluation

Carbon emissions

An average household produces	6 tonnes of CO2
This property produces	1.8 tonnes of CO2
This property's potential production	1.2 tonnes of CO2

Energy efficiency rating for this property

This property's current energy rating is B. It has the potential to be B.

[See how to improve this property's energy performance.](#)

Score	Energy rating	Current	Potential
92+	A		
81-91	B	81 B	86 B
69-80	C		
55-68	D		
39-54	E		
21-38	F		
1-20	G		

Energy Performance Certificate (EPC)

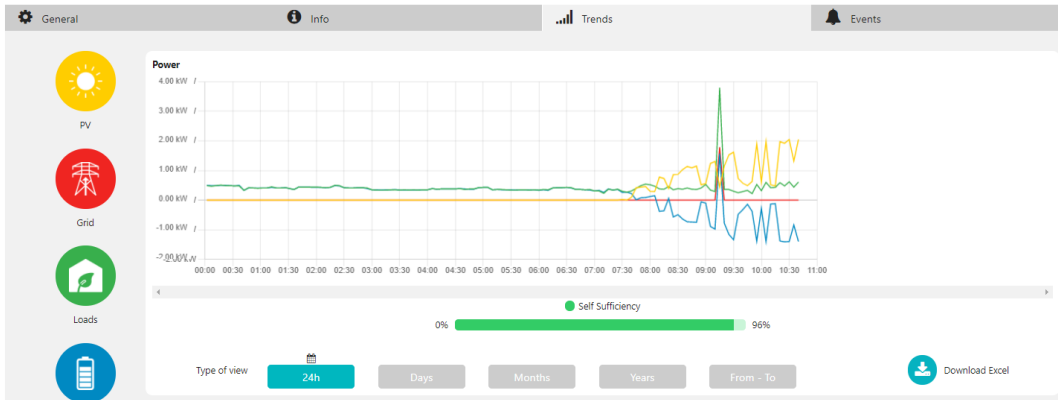
62 Ffordd Talargoch Prestatyn LL19 8NF	Energy rating B
Valid until 13 June 2031	Certificate number 8039-4026-1000-0841-7206

Property type
End terrace house
Total floor area
76 square metres

3.0KW of solar panels



Evaluation



Energy Performance Certificate (EPC)

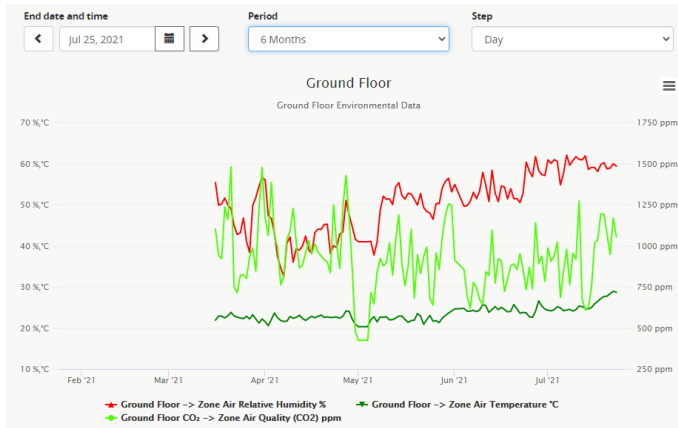
62 FFORDD TALARGOCH PRESTATYN LL19 8NF		Energy rating B
Valid until 13 June 2031	Certificate number 8039-4026-1000-0841-7206	

Property type
End-terrace house
Total floor area
76 square metres

3.0KW of solar panels



Evaluation



Energy Performance Certificate (EPC)

63 FFRIDD TALARGOCH
 PRESTATYN
 LL19 8NP

Energy rating
C

Valid until: 15 June 2031 | Certificate number: 5439-0126-4000-0611-7202

Property type: End-terrace house
 Total floor area: 54 square metres

2.4KW (SE/NW) of solar panels



Energy efficiency rating for this property

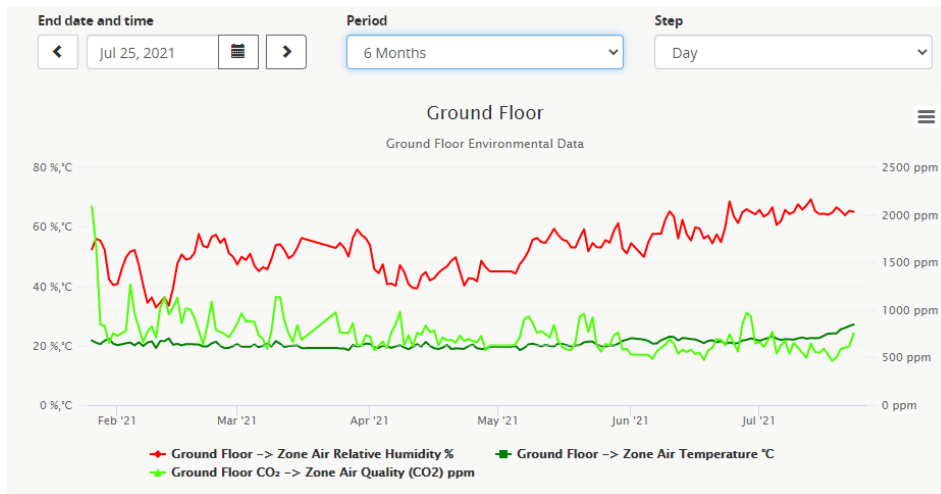
This property's current energy rating is C. It has the potential to be B.

[See how to improve this property's energy performance.](#)

Score	Energy rating	Current	Potential
92+	A		
81-91	B		85 B
69-80	C	77 C	
55-68	D		
39-54	E		
21-38	F		
1-20	G		

IES ANALYTIC PERFORMANCE DATA

28 Ffordd Tŷ Newydd ORP measures



FOUNDATIONAL ECONOMY (1)

Denbighshire County Council		Project012ORP20/21 Council Housing External Major Repairs + ORP	
February 2021 Progress Update			
Target	Number Detail	11 February 2021	
Number of Homes	235 homes total (55) homes to install Integrated PV cells Invertors, batteries alongside planned RMI of EWI and new roof measures (25) homes passport and IES only	PV to houses = 20 houses out of 55 Batteries to houses = 20 houses out of 55 IES Sensors to houses = 14 out of 55 EWI = delayed due to weather = 5 out of 55 but I am not worried about these as they will have more men on site once the weather is warm enough. PAS 2035 Assessed homes = I'm still being upskilled to do these, however, I did get a quote from a company that could do the initial assessments for us? Please confirm which route you'd like me to take?	
Est. Jobs Retained (by trade)	1 job retained (Welsh based and speaker as Site Assistant)	This Site Assistant (Rhodri) has been given the opportunity of running this site as the Site Manager. He is doing a very good job so far. He will receive SMSTS training. Job retained and more responsibility and higher status in job market.	
Est. Jobs Created (by trade)	2 people - electrical engineers 1 Decarb Coordinator - Oversee the delivery of the project and development of the Building Passport and Council Housing Decarb Strategy and Action Plan.	We are currently backfilling an electrician post. We are advertising another electrician post for the IES install and a general multi skilled post for IES sensor install. I have become the Decarb Co-ordinator as this role fits within my normal working day. However, we will be having conversations in couple of weeks to determine full extent of the role. We are, as a team, working on a decarb strategy and action plan. I have been asked to put together potential maintenance costs of running a decarb strategy. This strategy will fall in line with the PAS 2035 role and house assessments.	

FOUNDATIONAL ECONOMY (2)

Denbighshire County Council		Project012ORP20/21 Council Housing External Major Repairs + ORP	
February 2021 Progress Update			
Target	Number Detail	11 February 2021	
Est. Training Hours (by trade)	3 jobs created (2 renderers and a finishing foreman from the estate)	The 2 renderers have found work elsewhere with Denbighshire. So 2 unemployed persons from the estate now have work but not on our site. We have Martin, the finishing foreman on site and is doing a very good job and have had lots of positive feedback.	
Est. Apprentices (by trade)	8	2 roofing apprentices 1 labourer apprentice 1 renewable energy apprentice 1 electrician apprentice 1 plumbing apprentice DCC are planning to take on more apprenticeships this next financial year. I can get another 1 renewable energy apprentice.	
List of proposed measures with average cost of measure	PV, Inverters, Batteries, training, IES	PV, invertor, battery and install cost: £650K for 55 houses.	
Number of contractors upskilled	6	6, including Denbighshire in house. To date: 17 electricians have been upskilled in NICEIC PV panel course. These subcontractors will become MCS accredited with this funding. 9 electricians upskilled to fit the IES sensors.	

FOUNDATIONAL ECONOMY (INC' DLO's)

MCS ACCREDITED PV COURSE – 17 OPERATIVES

ROOFING (NATURAL SLATE) – 10 OPERATIVES

LEAD DRESSING – 2 OPERATIVES

IES INSTALL TRAINING – 9 OPERATIVES

SSSTS TRAINING – 12 OPERATIVES

PAS 2030 TRUSTMARK ACCREDITATION –
COMPANIES INCLUDING 2 UNSUCCESSFUL WELSH
MAIN CONTRACTORS (WORKING PROGRESS)

MCS ACCREDITATION – WORKING PROGRESS