



Llywodraeth Cymru  
Welsh Government

# SUMMER UPDATE 2024



## Addington Fund

01926 620 135

## Animal and Plant Health Agency (APHA)

0300 303 8268

## Badger Found Dead Survey

0808 169 5110

## British Cattle Movement Service (BCMS)

0808 169 5110

## Control of Agriculture Pollution

### Regulation Helpline operated by ADAS

01974 847 000

## Helpline operated by ADAS

01974 847 000

## DPJ Foundation

0800 587 4262

## EID Cymru

01970 636 959

## Farming Connect

03456 000 813

## Farming Community Network (FCN)

03000 111 999

## Lantra Wales

01982 552 646

## Natural Resources Wales (NRW)

0300 065 3000

## Quality Welsh Food Certification Body

01970 636 688

## Royal Agricultural Benevolent Institution (RABI)

0800 188 4444

## RPW Customer Contact Centre

0300 062 5004

## Samaritans

116 123

## TB Helpline

0800 496 1439

## Tir Dewi

0800 121 4722

# KEY DATES 2024

<b>15</b> JULY	Nutrient Management Investment Scheme EOI window opens
<b>22</b> JULY	Small Grants – Woodland Creation EOI window opens
<b>12</b> AUG	Small Grants – Environment (water) EOI Window opens
<b>23</b> AUG	Nutrient Management Investment Scheme EOI window closes
<b>30</b> AUG	Small Grants – Woodland Creation EOI window closes
<b>20</b> SEPT	Small Grants – Environment (water) EOI window closes
<b>22</b> NOV	Woodland Creation Grant – EOI window closes

Please note that the information in the Summer Update was accurate and up to date up until the date of publishing on 8 July 2024. For the latest date news and information please visit the Welsh Government website: GOV.WALES.

OGL © Crown copyright 2024, WG49840,  
Digital ISBN: 978-1-83625-257-3, Print ISBN: 978-1-83625-258-0

# CONTENTS



## 04 RURAL PAYMENTS WALES

## 07 AGRICULTURAL SUPPORT SCHEMES

## 08 SUSTAINABLE FARMING SCHEME

## 09 WOODLAND CREATION SCHEMES

## 11 AGRICULTURAL WAGES ORDER 2024

## 12 WHEN THE INSPECTOR CALLS

## 13 AGRICULTURAL POLLUTION REGULATIONS

## 15 LIVESTOCK ID AND MOVEMENT UPDATE

## 16 ANIMAL HEALTH AND WELFARE

## 19 WALES FARM SAFETY PARTNERSHIP

## 20 COME AND SEE US AT THE SHOWS

## 21 FIND US ON FACEBOOK

## 22 FARMING CONNECT

## 23 WHERE CAN I GET HELP?

# RURAL PAYMENTS WALES

## Woodland Schemes – Application Windows

A new approach has been introduced to the Woodland Creation Grant in 2024, there will be one application window, which opened on 4 March 2024 and will close on 22 November, or until the allocated budget has been committed, whichever is sooner.

The next Small Grant – Woodland Creation scheme window 3 opening and closing dates are 22 July – 30 August 2024.

## BPS 2024 payments

This year, an Advance payment, worth up to 70% of the estimated BPS 2024 claim value, will be made from 14 October 2024, subject to claim eligibility and receipt of all necessary supporting documents. Balance payments will be made from 2 December 2024.

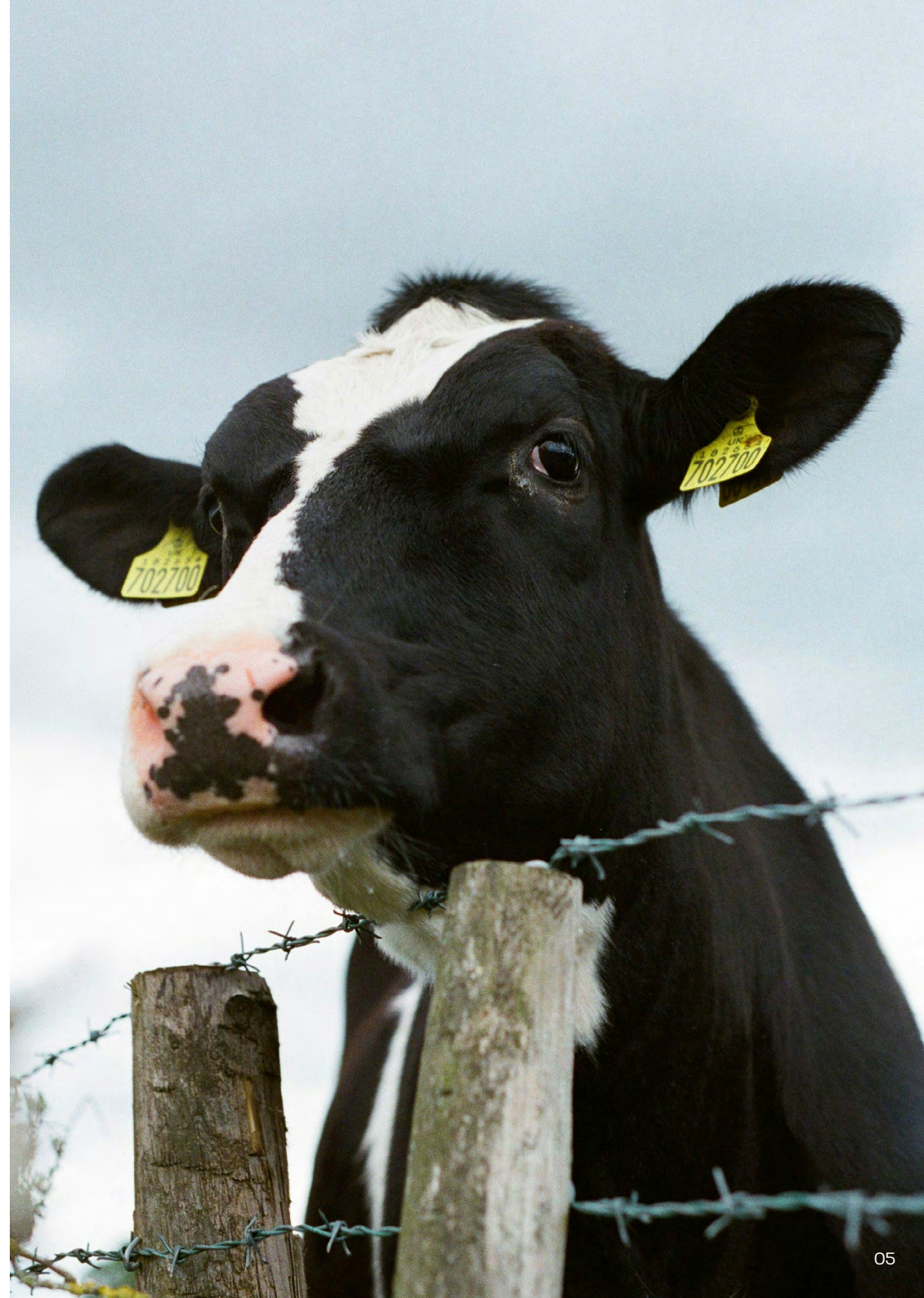


## Are you currently utilising a tCPH?

If you are currently utilising a tCPH you will need to ensure that the end date of your agreement is correct. Once the end date of your tCPH has passed you will no longer be able to notify the relevant authorities of livestock movements of that holding. You can amend the end date of your tCPH in the “Manage my CPH” section within your RPW online account. This can only be amended if the end date has not already passed. You will need to ensure that all your livestock is removed from the land on/or before the scheduled end date of the tCPH. If the end date has passed and livestock is still on the tCPH land, you will need to contact RPW to request permission to extend the end date of the tCPH. This change can only be completed if your tCPH is less than 364 days.

Full Guidance on CPH requirements can be found at the following:

[gov.wales/county-parish-holdings-and-livestock-movements-updated-guidance](https://gov.wales/county-parish-holdings-and-livestock-movements-updated-guidance)



## Cross Compliance 2024

Our 2024 factsheets reflect changes in requirements, good practice and to clarify wording. There have also been some changes to the Cross Compliance 2024 Verifiable Standards for:

- ✓ classifying breaches of Good Agricultural and Environmental Conditions (GAEC) and
- ✓ Statutory Management Requirements (SMR).

These changes include SMR 1 – Water Protection, updated to reflect requirements applying to all land from 1 January 2024 under the Water Resources (Control of Agricultural Pollution) (Wales) Regulations 2021.

[gov.wales/cross-compliance-2024](http://gov.wales/cross-compliance-2024)

## RPW Online – GOV.UK One Login

Access to RPW Online will be changing. We will be replacing the current Government Gateway service with the new GOV.UK One Login service later this year.

We will be inviting groups of RPW Online users to move over to the new One Login service; initially contact Agents/Farming Unions, followed by Sole Traders, Partnerships and other businesses. This approach will ensure we have sufficient help and support available from our Customer Contact Centre if required. We will invite you via your RPW Online account when it is time for you to move over to One Login.

One Login accounts will need an individual users email address, so please ensure details for all individuals within the business/organisation are up to date, including email addresses and mobile phone numbers, if available, via your RPW Online account.

# AGRICULTURAL SUPPORT SCHEMES

## Rural Development Schemes Key Dates

Application dates for all agricultural support scheme can be found at: [gov.wales/rural-schemes-application-dates](http://gov.wales/rural-schemes-application-dates).

Details of all guidance documents for the Agricultural Support Schemes can be found at [gov.wales/rural-grants-payments](http://gov.wales/rural-grants-payments), shortly before the round becomes available to apply.

## Nutrient Management Investment Scheme

As part of the £20m committed to support farmers to improve water and air quality and reach compliance with The Water Resources (Control of Agricultural Pollution) (Wales) Regulations 2021, the next Nutrient Management Investment Scheme Expression of Interest (Eoi) window will open on 15 July and close on 23 August 2024.

The objectives of the capital grant scheme is to support infrastructure and capital investments which enhance on-farm nutrient management, protect and enhance water, soil and air quality, improve on-farm resource efficiencies and technical performance and the use of technology to improve management decisions.

For the next round of the scheme, the grant offered for certain items associated with slurry storage has been increased from 40% to 50%.

One application per CRN is permitted per window and the maximum grant award is **£50,000** and the minimum is **£12,000**.

Applicants need to demonstrate how they comply with the Regulations. Providing details of existing and future slurry storage capacity requirements, with consideration of local rainfall and required freeboard.

Full details and guidance are published on the Welsh Government website.

## Small Grants – Environment (Water)

The Small Grants – Environment provides a maximum of £7,500 funding per window for Capital Works Projects. Set lists of Capital Works are available to support the delivery of beneficial environmental outcomes.

The next application window of the Small Grants – Environment Scheme will open 12 August 2024 and close on 20 September 2024. The theme of this window will be **Water**.



## SUSTAINABLE FARMING SCHEME

The Cabinet Secretary for Climate Change and Rural Affairs recently announced the introduction of a Sustainable Farming Scheme (SFS) Preparatory Phase of activity in 2025 with the proposed SFS Transition Period now starting from 2026.

This new timeframe provides the opportunity to do several important things.

The Cabinet Secretary will use this time to work with stakeholders on the newly established SFS Ministerial Roundtable to clarify the areas of agreement and resolve the final scheme design challenges. In addition, a new Carbon Sequestration evidence review panel will review the scheme proposals designed to sequester additional carbon. The panel will consider the scope for any new or alternative sequestration actions with potential to be included in the scheme.

We will undertake a data confirmation exercise which, with feedback from farmers, will provide an accurate picture of the habitat and tree cover across all farms.

Working with Farming Connect we will focus on knowledge transfer, prioritising on farm activity which supports efficiencies and align to the outcomes and actions being developed for the SFS.

We will also continue to work with stakeholders to identify and develop a set of proposals for further Optional and Collaborative Actions, with the aim of introducing these as soon as possible.

The Cabinet Secretary has confirmed his intention for BPS to be available in 2025. The BPS ceiling for 2025 will be announced in due course.

The analysis of feedback from the recent SFS consultation, along with the Welsh Government response can be found here: [gov.wales/sustainable-farming-scheme-guide](https://gov.wales/sustainable-farming-scheme-guide)

No final design decisions have yet been made on SFS, and we will continue to work in partnership with the farming industry to ensure that farming and food production in Wales has a long, successful, and vibrant future.



## WOODLAND CREATION SCHEMES



Following receiving pre-application advice you are able to apply to the Woodland Creation Planning Scheme ([gov.wales/woodland-creation-planning-scheme-overview](https://gov.wales/woodland-creation-planning-scheme-overview)).

The grant provides funding of £1,000 to £5,000 to appoint a Registered Woodland Planner to offer advice and develop a woodland creation plan for you. The Scheme is open for Expressions of Interest throughout the year. Selection is undertaken monthly. Once a woodland creation plan has been written, you can apply for a Woodland Creation Grant.

Following calls from the industry a new approach has been introduced for the **Woodland Creation Grant**. There is now one window open until 22 November 2024, or until the allocated budget has been committed. This is the first time Welsh Government has opened one long window during the year. Selection will be run monthly. The scheme offers funding for larger areas of woodland, with last years increased payment rates for fencing, and maintenance and premium payments for 12 years.

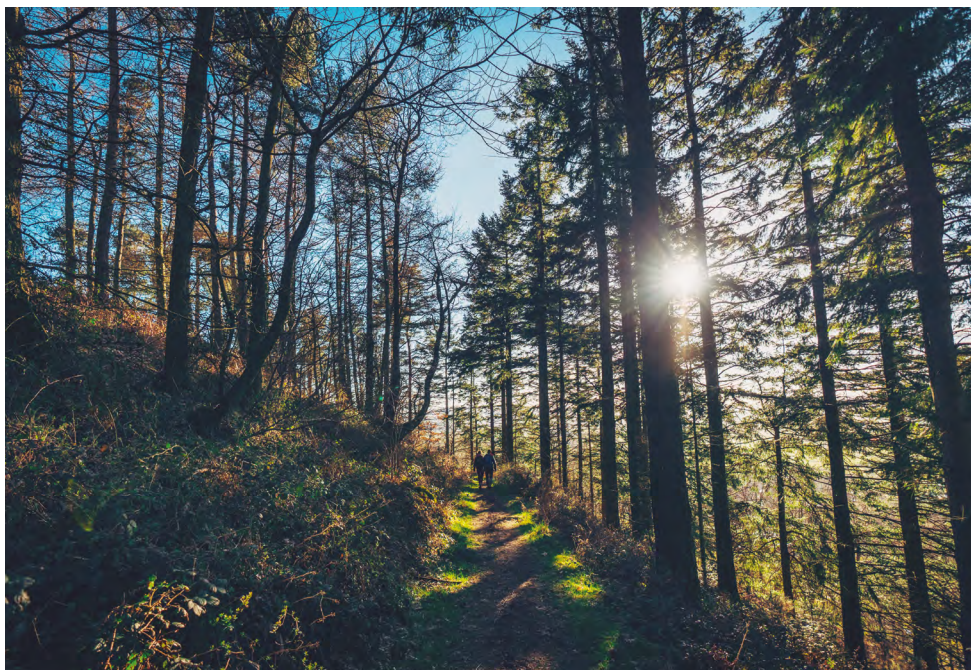
There is also the **Small Grants – Woodland Creation scheme** for planting of less than 2 Hectares. There are several windows for applications throughout the year, dates are available in the key dates section and on the Welsh Government website: [gov.wales/rural-schemes-application-dates](https://gov.wales/rural-schemes-application-dates). This grant offers support for planting

on eligible land which is included in the low sensitivity area shown on the Woodland Opportunities Map (WOM): [datamap.gov.wales/maps/small-grants-woodland-creation/](https://datamap.gov.wales/maps/small-grants-woodland-creation/). There is no requirement for a verified woodland plan. The scheme offers last years increased payment rates for fencing, and maintenance and premium payments for 12 years.

### Free Advice on Woodland Creation

Are you thinking of creating woodland on your farm? If so, are you aware there's a free 'pre-application service' available from NRW.

This 'pre-application service' is designed to offer information about the suitability of your land for woodland creation. To access the free advice or for further information email [GwirioCynllunCoetir@cyfoethnaturiolcymru.gov.uk](mailto:GwirioCynllunCoetir@cyfoethnaturiolcymru.gov.uk)



## AGRICULTURAL WAGES ORDER 2024

### Agricultural Minimum Wage Changes from 1 April 2024

All employed agricultural, horticultural and forestry workers in Wales (including workers employed by gang masters and employment agencies) are entitled to be paid at least the Agricultural Minimum Wage.

### It is a criminal offence to not pay agricultural workers at least the Agricultural Minimum Wage.

The Agricultural Wages (Wales) Order 2024 replaced the 2023 Order and increased the minimum wage rates and allowances from 1 April 2024.

The overtime rate is also now payable at 1.5 times the agricultural worker's actual hourly rate, rather than the applicable agricultural minimum wage hourly rate.

The wage rate increases were recommended by the Agricultural Advisory Panel for Wales – an independent body chaired by Dr Nerys Llewelyn Jones.

Welcoming the new Order, Dr. Nerys Llewelyn Jones said:

“The new arrangements ensure that all agricultural workers receive fair, regularly reviewed wages, allowances and terms of employment, further contributing to the Welsh Government’s health and wellbeing agenda by safeguarding household incomes, especially within rural communities.



### Agricultural Minimum Wage 2024-2025

A Guide for Agricultural Workers and Employers on Minimum Wage Rates and other Terms and Conditions  
Issue 8

“The Order will help ensure that careers in agriculture, horticulture and forestry are considered viable and sustainable choices for both current and potential employees, and by setting out clear guidelines for employers, the Welsh Government’s new Order will do much to encourage the development and retention of an appropriately skilled workforce in Wales.

“It will also ensure that employers treat all employees appropriately, including farm workers and apprentices working within the sector.”

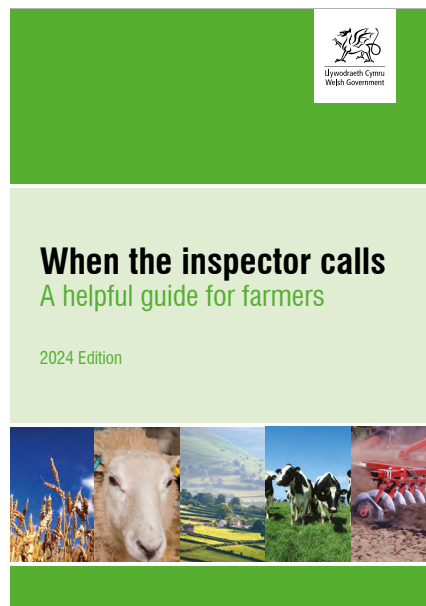
More detailed information and guidance is available at: [gov.wales/agricultural-advisory-panel-wales/legislation-and-guidance](https://gov.wales/agricultural-advisory-panel-wales/legislation-and-guidance)

# WHEN THE INSPECTOR CALLS – INSPECTION GUIDANCE

Farm inspections take place on a sample number of farms each year to ensure that farmers are complying with the rules and regulations required, as a condition to receiving financial support.

Guidance and templates for on-farm inspections have been updated and are now available to download at [www.gov.wales/farm-inspections](http://www.gov.wales/farm-inspections). Hard copies will be available on the Welsh Government stand at agricultural shows this summer as well as from Farm Liaison Service staff at livestock markets throughout Wales.

If you would like to request a hard copy, please email [farmliaisonservice@gov.wales](mailto:farmliaisonservice@gov.wales)



# AGRICULTURAL POLLUTION REGULATIONS

## Control of Agricultural Pollution Regulations – Are you up to date?

The Control of Agricultural Pollution Regulations introduced new record keeping requirements in 2023 for the application of nitrogen fertilisers and organic manures. These requirements included the creation and maintenance of records including Nutrient Management Plans and Risk Maps.

It is important to ensure you have undertaken the required calculations for your holding to demonstrate compliance with the requirements of the Regulations ahead of any inspection.

The Regulations require records to be updated following certain activities including:

- ✓ Spreading of organic manure within 1 week of the spreading activity.
- ✓ Spreading of manufactured Nitrogen fertiliser within 1 week of the spreading activity.
- ✓ The sowing of crops within 1 week of the sowing activity.
- ✓ Import or export of slurry or manure to or off the holding within 1 week of the activity.
- ✓ Changes to the size of a holding must be recorded within 1 month of the change occurring.
- ✓ Risk Maps must be updated within 3 months of any change of circumstances.



For full details on the record keeping requirements see the guidance. A digital workbook is also available on the Welsh Government website: [gov.wales/control-agricultural-pollution-regulations-guidance](http://gov.wales/control-agricultural-pollution-regulations-guidance).

### Infrastructure changes

Natural Resources Wales must be notified at least 14 days before work on a new or improved silo or slurry store begins. You can notify online at: [naturalresources.wales/guidance-and-advice/business-sectors/farming/silage-slurry-and-other-livestock-manure-storage?lang=en](http://naturalresources.wales/guidance-and-advice/business-sectors/farming/silage-slurry-and-other-livestock-manure-storage?lang=en).



### Requirements from 1 August 2024

The next phase of the Control of Agricultural Pollution Regulations comes into force on 1 August 2024. This will introduce new requirements for the storage of slurry and poultry manure and introduce closed periods for the spreading of high nitrogen organic manures (including slurry). The closed periods are outlined in the table below. Exemptions apply, see guidance for details.

Soil Type	Grassland	Tillage land
Sandy or shallow soil	1 September – 31 December	1 August – 31 December
All other soils	15 October to 15 January	1 October to 31 January

The spreading of farmyard manure is not impacted by the closed period.

### Guidance and support

Technical support is available from the Control of Agricultural Pollution Regulations helpline operated by ADAS on **01974 847000**.

Supporting resources are also available via Farming Connect.

## LIVESTOCK ID AND MOVEMENT UPDATE

### Important Changes for Sheep and Goat Keepers

The Sheep & Goat Annual Inventory is a legal requirement to record the total number of sheep and/or goats you own. The way in which the inventory is run in Wales will be changing. To bring the annual inventory in line with all other UK nations, the date of the inventory in Wales will now be 1 December but the information required will remain the same.



There are two significant changes:

#### ✔ Change of Annual Inventory Date

The date of all future annual inventories will be 1 December. The next date you will be asked to record your sheep and/or goat numbers will be 1 December 2024.

#### ✔ Move to an Online Annual Inventory

From now on, the usual hard-copy annual inventory will no longer be issued.

In future the way to submit your inventory will be via your EIDCymru online account. Keepers who do not have an account, are encouraged to register for one over the summer. Staff at the EIDCymru bureau are happy to help you register for an online account and answer any queries you may have. They are available by telephone **01970 636959** or by email at [contact@eidcymru.org](mailto:contact@eidcymru.org).

We recognise this may be a change to the way in which you have previously completed your inventory and we encourage you to contact EIDCymru as soon as possible with any queries you may have about the new process.

Before the inventory opens, any keeper without an EIDCymru account will receive a letter with an online link as an alternative method of completing the inventory. If there are exceptional circumstances you are advised to contact EIDCymru.

If you wish to discuss the change, staff from EIDCymru, the Farm Liaison Service and Farming Connect will all be in attendance at the Royal Welsh Show, Regional Shows and Livestock Markets and will be happy to provide further guidance.

Please visit [gov.wales/sheep-goat-movements-registration](http://gov.wales/sheep-goat-movements-registration) for further information.



# ANIMAL HEALTH AND WELFARE

## Poultry and Other Captive Birds Compulsory Registration

From 1 October 2024 it will become a legal requirement for bird keepers in Wales and England to register for a County Parish Holding (CPH) number and register as a bird/poultry keeper on the GB Poultry Register. This is with the exception of birds that are kept as pets and live solely indoors without any outside access.

The current requirement is that only bird keepers with more than 50 birds are legally required to register their birds, but the new requirements introduced by Defra and Welsh Government in March 2024 has reduced this to bird keepers with one bird or more.

This mandatory change will allow us to communicate with bird keepers efficiently and will help to manage potential disease outbreaks such as avian influenza. Furthermore, it will limit the spread of disease.

We are encouraging keepers in Wales to register their birds ahead of the legal deadline on 1 October 2024, by obtaining a CPH number from Rural Payments Wales and register with the Animal Plant Health Agency (APHA).

Bird keepers will be required to review their poultry register entry on an annual basis to ensure their details are up to date and give you the opportunity to make any changes.



## What is a CPH and what are the rules?

A CPH (County Parish Holding) number is the basis of all livestock movement reporting regimes in Wales. If you keep one or more of the following species: cattle (including bison and buffalo), deer, sheep, goats, pigs and poultry (from 1 October 2024) you will need to apply for a CPH number from RPW Online. You will find more details in the link below: [gov.wales/county-parish-holdings-livestock-movements](https://gov.wales/county-parish-holdings-livestock-movements).

## How will CPH effect the new poultry registration requirements?

Bird keepers that already have a CPH for livestock can use this for their poultry registration. Poultry keepers that do not hold a CPH will need to contact RPW, who will allocate you with a CPH in advance of the 1st of October deadline.

To obtain a CPH, follow this link: [gov.wales/login-rural-payments-wales-rpw-online](https://gov.wales/login-rural-payments-wales-rpw-online)

For assistance Tel: 0300 062 5004.

## Bovine Viral Diarrhoea

BVD is a viral disease affecting cattle, which can lead to abortion, infertility, deformed calves, and compromised herd health, particularly among young stock. Herds infected with BVD often experience increased cases of calf pneumonia. Given the potential economic impact, cattle owners are recommended to test their herds for BVD annually. Testing improves herd health and profitability by allowing swift identification of infected animals, disease control and informed and safer cattle trading.

Cattle sector representatives and Welsh Government have been working together to develop legislation to facilitate the eradication of BVD in Wales. In preparation for the new BVD legislation coming into force on 1 July 2024, you are recommended to screen your herd and consult with your veterinarian. This will ensure you

are aware of your herd status and can take measures to keep BVD out. If you find an antigen-positive animal, it is recommended you remove it from your herd as soon as possible.

The benefits of being BVD-free include increased productivity, fertility, and a reduced carbon footprint for your herd. Maintaining a BVD-free status improves herd health by reducing antibiotic usage and promoting better calf health.

From 1 July 2024, the industry led BVD legislation that Welsh Government is introducing will require keepers to:

- ✓ Screen their herds for Bovine Viral Diarrhoea (BVD) annually,
- ✓ Isolate Persistently Infected (PI) animals from the rest of the herd for the remainder of their lives.

Cattle keepers will have until 1 July 2025 to complete their annual herd test. If any persistently infected animals are identified, they will be restricted on farm for the remainder of their lives.

These measures will support the innovative, industry-led approach to stopping the spread of BVD, safeguarding animal welfare, and maintaining a healthy and sustainable cattle industry in Wales. Cattle industry representatives with Welsh Government assistance will set up a Wales BVD governance body involving a comprehensive support structure to facilitate BVD eradication efforts. Further information on measures being introduced from 1 July 2024 and from 1 July 2025 is available at: [gov.wales/keeping-animals](https://gov.wales/keeping-animals).

## Bluetongue Virus – Remain Vigilant

Bluetongue virus (BTV-3) is an infectious, non-contagious, midge-borne viral disease, which affects wild and domestic ruminants and camelids. It does not infect humans and there is no risk to public health or food safety.

Bluetongue can have serious animal welfare, and economic impacts on farming businesses. These include milk-drop and an increase in the number of stillborn lambs and calves.

The Chief Veterinary Officer (CVO) for Wales has established a high-level working group, including farming industry and levy body

representatives to discuss animal disease risks and priorities. Measures to control bluetongue and the best ways to provide updated advice and guidance to livestock keepers are significant issues, which are discussed regularly.

Farmers should continue to monitor their animals frequently for clinical signs and make sure their animals and land are registered with Rural Payments Wales (RPW) and the Animal and Plant Health Agency (APHA) so that animals can be located in the event of an outbreak.

BTV is a notifiable disease. Suspicion of BTV in animals in Wales must be reported to the Animal and Plant Health Agency on **0300 303 8268**.



## KEEPING CHILDREN SAFE ON THE FARM



Children should not be allowed in the farm work place (and for young children they should enjoy outdoor space in a secure fenced area).

Any access to the work area by children under 16, for example for education, or knowledge experience, should be planned and fully supervised by an adult not engaged in any work activity.

Children under the age of 13 years are specifically prohibited from driving or riding on any agricultural machine.



For more information, scan above or, search [www.hse.gov.uk](http://www.hse.gov.uk)

**PARTNERIAETH  
DIOGELWCH  
FFERM CYMRU**  
////////////////////  
**WALES  
FARM SAFETY  
PARTNERSHIP**

## COME AND SEE US AT THE SHOWS



Welsh Government staff, including members of the Farm Liaison Service will be at the Welsh Government Pavilion during the Royal Welsh Show which will be held from Monday 22 July until Thursday 25 July.

Farm Liaison Staff will also be on the Welsh Government stand along with Farming Connect staff at the following shows:

Cardigan County Show	Saturday 3 August
Anglesey County Show	Tuesday 13 and Wednesday 14 August
Pembrokeshire County Show	Wednesday 14 and Thursday 15 August
Denbigh & Flint Show	Thursday 15 August
Merioneth County Show	Wednesday 21 August
Usk Show	Saturday 14 September

Staff will be available to provide you with the most up to date information on various topics such as the proposed Sustainable Farming Scheme, agricultural support schemes, Woodland creation schemes, Agricultural Pollution Regulations and EID Cymru.

Come along and say hello.

## FIND US ON FACEBOOK



You can now follow us for regular news and updates on topics relating to rural affairs on our brand-new Facebook page. Search for Cymru Wledig/Rural Wales on Facebook or visit: [facebook.com/cymruwledig](https://facebook.com/cymruwledig).



## Gwlad

You can also sign up to receive our monthly rural affairs e-newsletter Gwlad by visiting: [gov.wales/subscribe/announcements](https://gov.wales/subscribe/announcements).





Ariennir gan  
**Lywodraeth Cymru**  
Funded by  
**Welsh Government**



**FARMING**  
connect  
cyswllt  
**FFERMIO**

EIN FFERMYDD  
OUR FARMS

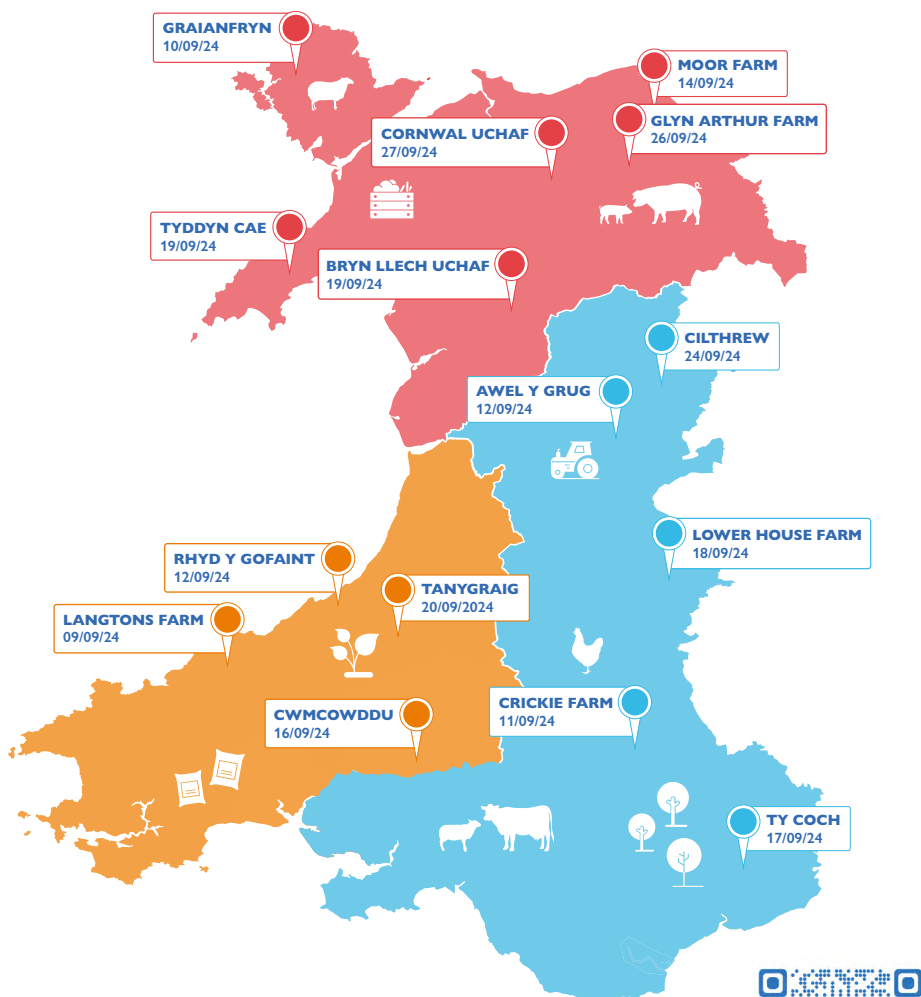


**FARMING**  
connect  
cyswllt  
**FFERMIO**

SGILIAU A  
HYFFORDDIANT  
SKILLS AND  
TRAINING

## SAVE THE DATE

### 9th – 27th September 2024



Join Farming Connect for an unique series of farm walks across the Our Farms Network this September.



## FARMING CONNECT SKILLS FUNDING

### APPLY NOW TO...

...develop your skills, develop your business ...and plan ahead

The Farming Connect Accredited Training Programme gives individuals the opportunity to apply for funding towards an accredited short training course.

- All training courses subsidised by up to **80%** for registered individuals
- More than **120 courses** available
- Network of **approved training providers** located throughout Wales

*Applications approved on a monthly basis*

### COURSES INCLUDE:

- Agronomy Course
- An Introduction to Peatland Restoration
- Business planning and development
- Control of Invasive Species
- Environmental awareness, audit and management for your business
- Grassland Systems
- Planning a diversification or new enterprise on a farm
- Planting and Establishing Woodlands
- Understand and using MTD (*Making Tax Digital*) software



**Local Development Officer**

**03456 000 813** [gov.wales/farmingconnect](http://gov.wales/farmingconnect)

Rydym yn croesawu galwadau'n Gymraeg / We welcome calls in Welsh

# WHERE CAN I GET HELP?

## GET IN TOUCH WITH US

### **FARMWELL WALES**

[www.farmwell.wales](http://www.farmwell.wales)

### **FARMING CONNECT**

03456 000 813

### **THE DPJ FOUNDATION**

0800 5874262

### **THE ADDINGTON FUND**

01926 620135

### **TIR DEWI**

0800 1214722  
[mail@tirdewi.co.uk](mailto:mail@tirdewi.co.uk)

### **FARM LIAISON SERVICE**

0300 0255449  
[farmliaisonservice@gov.wales](mailto:farmliaisonservice@gov.wales)

### **ROYAL AGRICULTURAL BENEVOLENT INSTITUTION**

0800 188 4444  
[info@rabi.org.uk](mailto:info@rabi.org.uk)

### **THE FARMING COMMUNITY NETWORK**

03000 111 999  
[help@fcn.org.uk](mailto:help@fcn.org.uk)

### **RPW CUSTOMER CONTACT CENTRE**

0300 062 5004

### **MIND CYMRU**

0300 123 3393  
[info@mind.org.uk](mailto:info@mind.org.uk)

### **SAMARITANS**

116 123  
[jo@samaritans.org](mailto:jo@samaritans.org)