

WELSH HEALTH CIRCULAR



Llywodraeth Cymru
Welsh Government

Issue Date: 16 November 2021

STATUS: ACTION

CATEGORY: POLICY

Title: Role and Provision of Dental Public Health in Wales

Date of Review: November 2024

For Action by:
Chief Executives, All Health Boards &
Public Health Wales

Action required by:
Immediate

Sender: Alex Slade, Deputy Director for Primary Care
and Warren Tolley, Deputy Chief Dental Officer

Welsh Government Contacts:
Andrew Powell-Chandler, Head of Dental Policy
andrew.powell-chandler@gov.wales
Warren Tolley, Deputy Chief Dental Officer
Warren.tolley@gov.wales

Enclosure(s): Guidance and annex documents on the above issue

Summary

1. The purpose of this Welsh Health Circular is to describe the expected:
 - national dental public health functions; and
 - provision of dental public health specialist advice and support to NHS organisations and others oral health stakeholder in Wales.

Action

2. Chief Executives of NHS organisations are requested to ensure dental public health consultants and other resources work for the whole system in Wales and that provision is consistent with this guidance.
3. This circular provides guidance to Public Health Wales, Health Boards, Health Education and Improvement Wales and other NHS organisations on the provision of dental public health advice and support available in Wales. It replaces Welsh Health Circular – WHC/2008/057.

Yours sincerely,



Alex Slade, Deputy Director for Primary Care



Warren Tolley
Deputy Chief Dental Officer for Wales

Role and provision of Dental Public Health in Wales

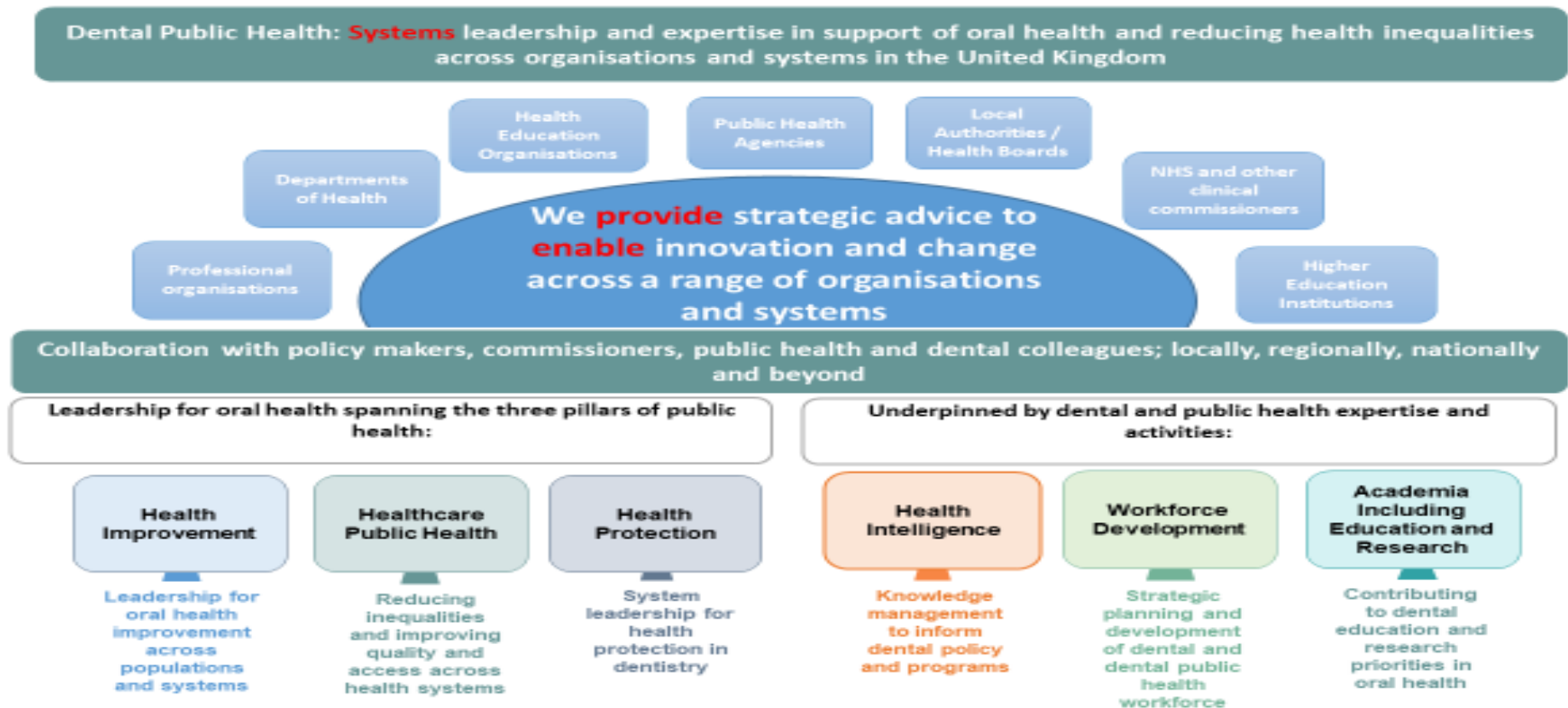
1. Public Health Wales should retain a minimum of three whole time equivalent Consultants in Dental Public Health, together with supporting staff and resources to deliver to the role described in Annex 1 and the Faculty of Public Health document¹
2. The Welsh Government has a long-term agreement with Public Health Wales to provide dental public health expertise to the structures and systems in Wales, including advice and support to Welsh Government, Health Boards (HBs), Health Education and Improvement Wales (HEIW), Welsh Dental Committee (WDC), Clinical Dental Leads, other relevant organisations and national advisory committees or forums.
3. Undertake regular dental epidemiological programmes to determine the current oral health and well-being status of Wales and describe existent inequalities across the life-course.
4. Determine inequities present in the provision and utilisation of NHS dental service (e.g. oral health needs assessments)
5. Understand the impact of poor oral health on general health and well-being across the life-course
6. Describe the impact of current oral service provision on sustainability and promote The Well-being of Future Generations (Wales) Act
7. Provide input into the delivery of A Healthier Wales, workforce development and provision to ensure a dental public health value-based approach
8. Ensure a dental public health leadership (including a value-based approach) to NHS dental services reform including dental services working collaboratively with wider health and social care services e.g. as a part of a cluster
9. Work with patients and the public in a participatory approach to promote co-production and co-design of dental public health activities
10. Promote healthy behaviours and healthy choices across the life-course and focus on early years to secure a healthy trajectory for future generations across Wales
11. Provide dental public health advice on dental quality and safety systems including quality improvement and advice on health protection related to dental services and oral health programmes
12. Provide strategic advice, national leadership and co-ordination of oral health improvement programmes such as Designed to Smile as described in WHC(2017)023

¹ Faculty of Public Health, Functions and Standards of a Public Health System

13. Advise on evidence base, monitoring and evaluation of key oral health programmes and any innovative local/regional/national dental services transformation programmes

14. Deliver speciality training in dental public health and commission or promote high quality research in dental public health

Annex 1. Role of the Dental Public Health in the United Kingdom²



V11
02.12.20

² Dental Public Health: Connect, Challenge and Change by the BASCD Consultants and Specialist Executive Group

Annex 2

National Dental Public Health Programmes and specific funding for certain dental public health functions (2021)

Dental Public Health Programme	Funding from Dental Policy, Welsh Government	Comments
<i>General Dental Services Reform Programme</i>	Staff costs: One Band 7 Senior Project Manager One Band 5 project support officer posts Other non-staff cost as agreed with Welsh Government on an ongoing basis	Non-staff costs: production of programme products, reports, communication, translation, commissioning of any research/evaluation, organisation and delivery of events, workshops etc
<i>Designed to Smile</i>	Annual cost for staff costs borne by Public Health Wales. Non-staff cost borne by Welsh Government	Website, programme products, translation etc (Annual funding for delivery of the programme goes directly to Health Boards. Community Dental Services are responsible for the programme delivery)
<i>Oral Health Intelligence + others</i>	Recurrent funding has been made available to improve oral health intelligence and other capacity in dental public health. Funding for Training and Calibration (T&C) event for dental epidemiology: Depending on types of survey, also non-staff costs.	Band 7 Data Analyst (permanent). 50% of Speciality Training Post in Dental Public Health. Multiple dental information/datasets exists and thus opportunity to pull them together into a 'dental datapool' and analyse to inform policy and planning
<i>Dental Public Health practitioner/Dental Practice Advisor role</i>	6 sessions a month - supporting dental public health consultants in their systems role of improving Dental Quality and Safety System in Wales including quality improvement	National design and co-ordination of Primary Dental Care Dental Annual Self-Assessment Tool and Bi-annual Primary Care Dental Quality and Safety Forum
<i>Welsh Oral Health Information Unit (WOHIU)</i>	Hosted by Cardiff University School of Dentistry through SLA between PHW and Cardiff University	Essential unit for delivery of dental epidemiology programme in Wales