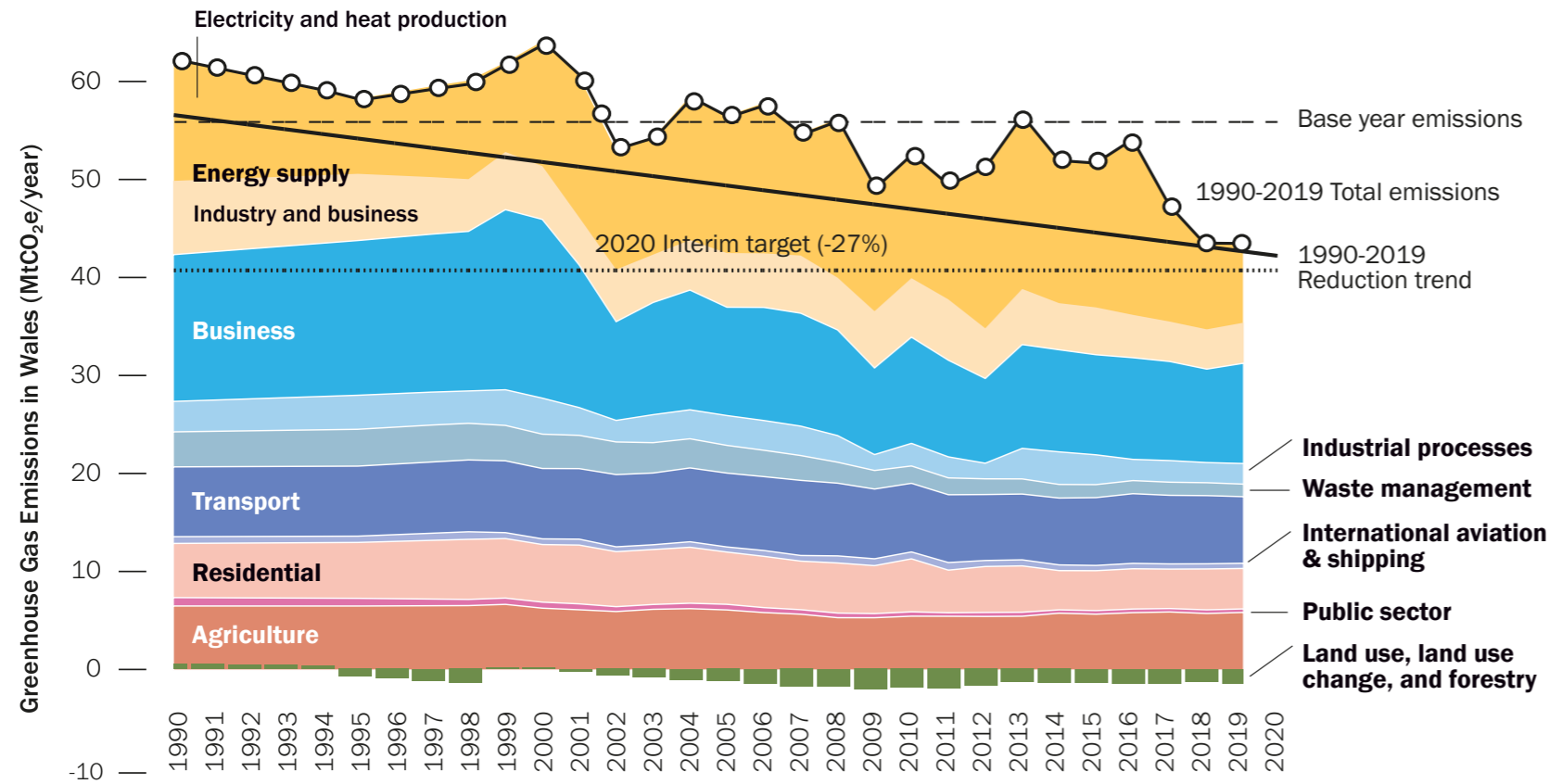


2019 Wales Greenhouse Gas Emissions



Greenhouse Gas Emissions in Wales



The sector definition of the Net Zero Wales Plan (CB2) varies from both the greenhouse gas inventory (GHGI) and the Low Carbon Delivery Plan (CB1).

Sector GHGI



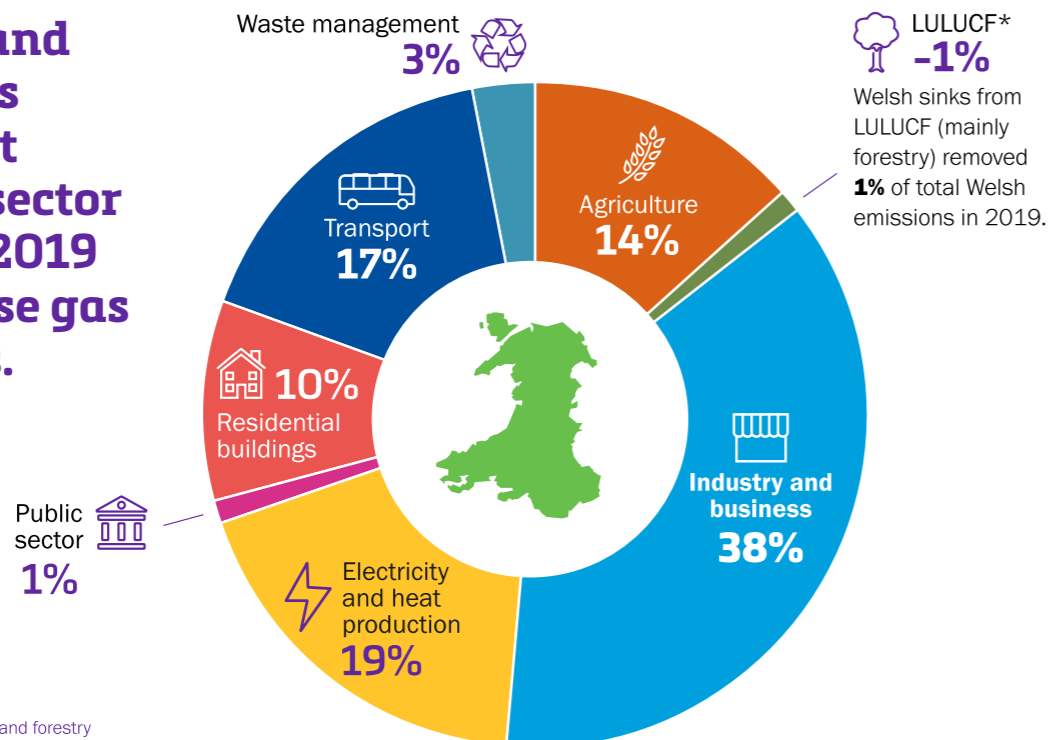
Sector Plan 2



Change in greenhouse gas emissions



Industry and business is the largest emitting sector of Wales' 2019 greenhouse gas emissions.



Sources of emissions

	1990 (baseyear) - 2019	2018-2019
Agriculture	-10%	+1.8%
Industry and business	-35.7%	+5.3%
Electricity and heat production	-35%	-10%
Public sector	-57.8%	-3.1%
Residential buildings	-25.3%	-1%
Transport	-6.3%	-2.2%
Waste management	-64.2%	-2.8%

Size of emissions sink*

	1990 (baseyear) - 2019	2018-2019
LULUCF	+0.33 MtCO ₂ e	+0.03 MtCO ₂ e

* The LULUCF sector has remained a net removal of emissions for most of the time-series (except for 1990-1994, 1999 and 2000 where it was a net source of emissions). This sink has increased by 0.33 MtCO₂e between 1990 and 2019, and it has increased by 0.03 MtCO₂e between 2018 and 2019.

* Land use, land use change and forestry