

KEY

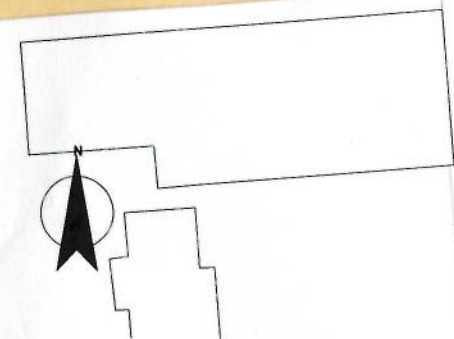
- Class 2 Highway adopted Prifffordd Dosbarth 2
- Class 3 Highway adopted . Prifffordd Dosbarth 3
- Unadopted Highway. Prifffordd heb ei fabwysiadu.
- Area to be stopped-up. Ardal i'w chau

Description of area to be stopped-up:
Part of the footway varying in width between 5.1m and 1.35m over a length of 21m starting at a point 7.3m north of the junction of the High Street with Pwll Glas.

Disgrifiad o'r ardal i'w chau:
Y rhan o'r llwybr troed yn amrywio o ran lled rhwng 5.1m ac 1.35m dros hyd o 21m gan ddechrau ar bywynt 7.3m i'r gogledd o gyffordd y Stryd Fawr gyda Phwll Glas.

PWLL GLAS

HIGH STREET (STRYD FAWR)



Graddfa / Scale 1:500 @ A4

MOLD TOWN CENTRE

**LLYWODRAETH CYMRU
WELSH GOVERNMENT
Trafnidiaeth / Transport**

**THE STOPPING UP OF HIGHWAYS (HIGH STREET, MOLD,
FLINTSHIRE) ORDER 201-**

**GORCHYMYN CAU PRIFFYRDD (STRYD FAWR, YR WYDDGRUG,
SIR Y FFLINT) 201-**

Deposited Plan/Y Plan a Adnewwyd
File No/ Rhif y Ffeil: qA1384585

Project: Bailey Hill		Client: Flintshire County Council	
Form number n/a	X ref/revise "	Original date 1.3.2019	Drawn: PH Checked: CH