



Llywodraeth Cymru
Welsh Government

WALES TB DASHBOARD

QUARTER 1 2019

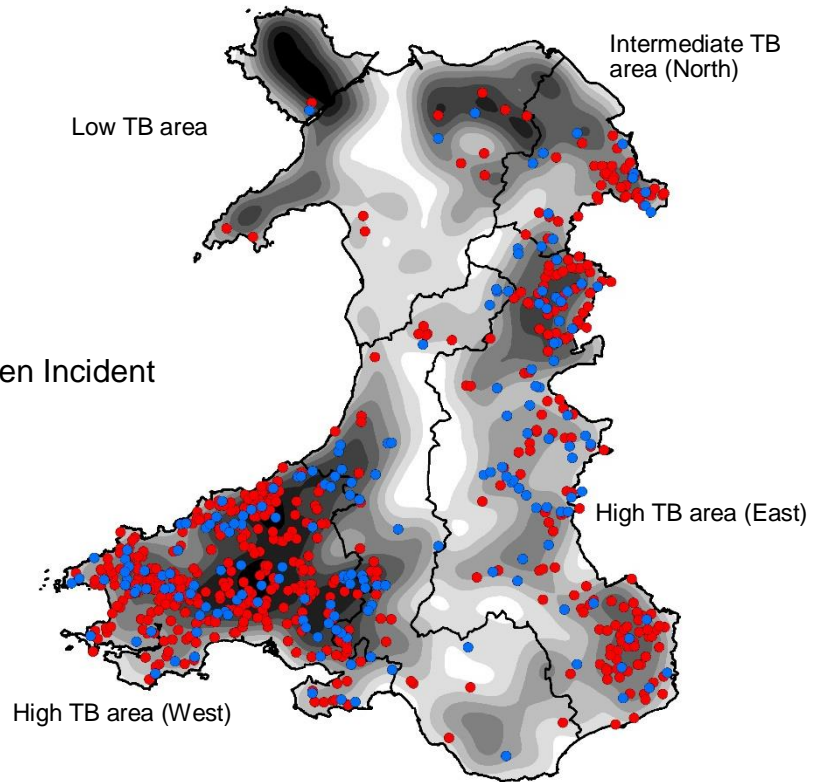
Figure 1: New Incidents in Q1 2019 and open Incidents as at the end of the quarter

● Q1 2019 New Incident ● Q1 2019 Open Incident

Low ← Cattle Herd Density → High

Lowest TB levels in **North West Wales**, highest in **South West**

Most TB breakdowns in Wales are in the high TB areas in the East and West



CLICK ON REGIONS BELOW to explore in more detail

	Live Herds*	New Incidents	Incidents closed	Open Incidents**	Reactors Disclosed	Q1 2010 to Q1 2019
Wales	11,955	184	168	699 (16)	2,501	
High TB (West)	3,251	85	69	370 (16)	1,626	
High TB (East)	2,862	56	70	196 (-14)	435	
Intermediate TB (Mid)	2,048	28	14	59 (14)	132	
Intermediate TB (North)	953	11	7	58 (4)	294	
Low TB	2,841	4	8	16 (-4)	14	

Sparklines show open cases, adjusted by herd numbers, on a quarterly basis since 2010. Red bar indicates highest level, green bar lowest.

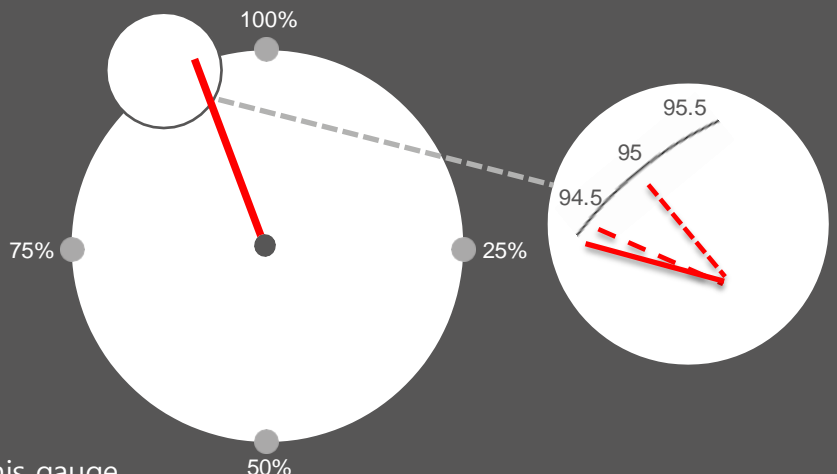
* Live herds at end of previous year (2018). **Change in the number of open incidents since last quarter in brackets.

Officially TB free Gauge Q1 2019

94.2%

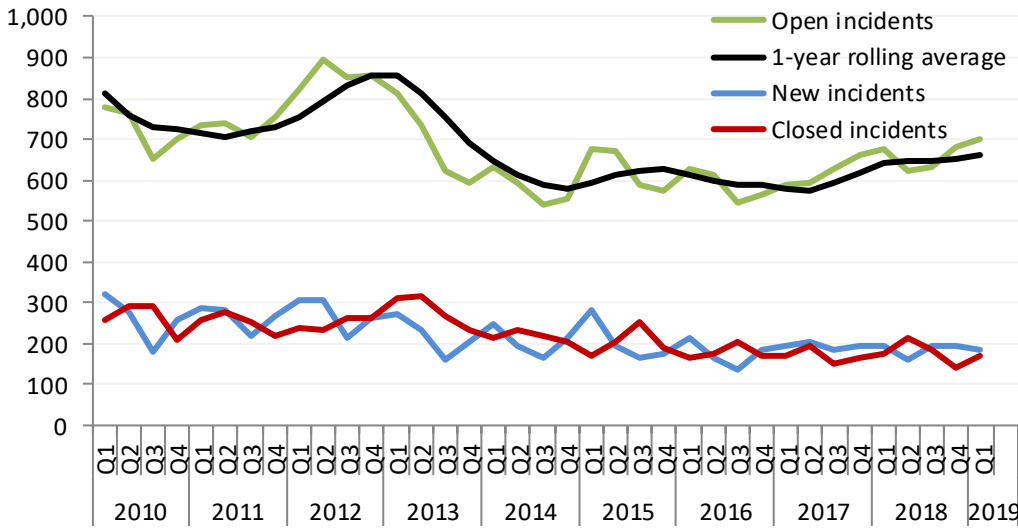
of herds were TB free in Q1 2019. This is lower than the previous year (94.3%), and lower than with Q1 2017 (95.0%).

— QTR 1 2019
- - - QTR 1 2018
- - - - QTR 1 2017



[CLICK HERE](#) for Beef and Dairy versions of this gauge

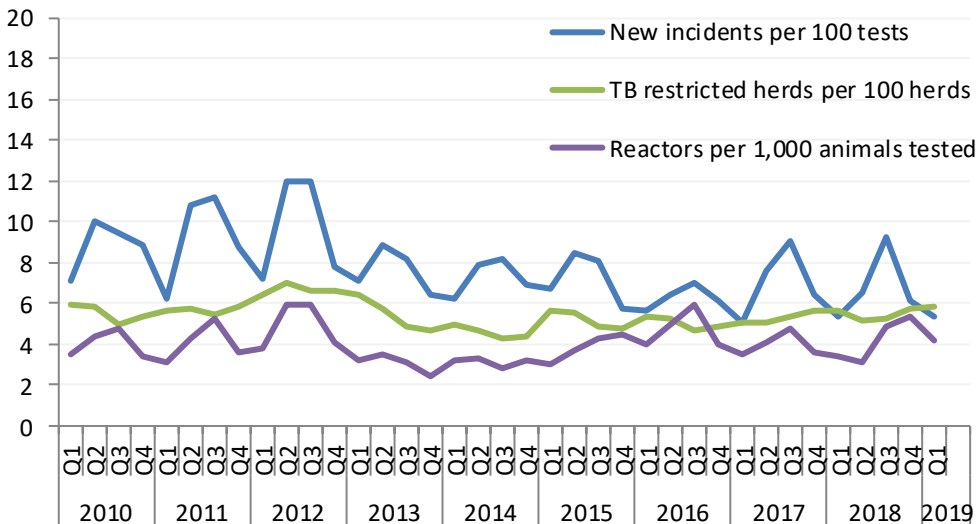
New, closed and open incidents



Fall in open incidents since 2012. Steady increase in recent quarters (Q3 2016 - Q4 2018) with a fall to Q2 2018 and a steady increase to the latest quarter.

In Q4 2018 there were 16 more new incidents than closed incidents, meaning a net 2% increase in open incidents.

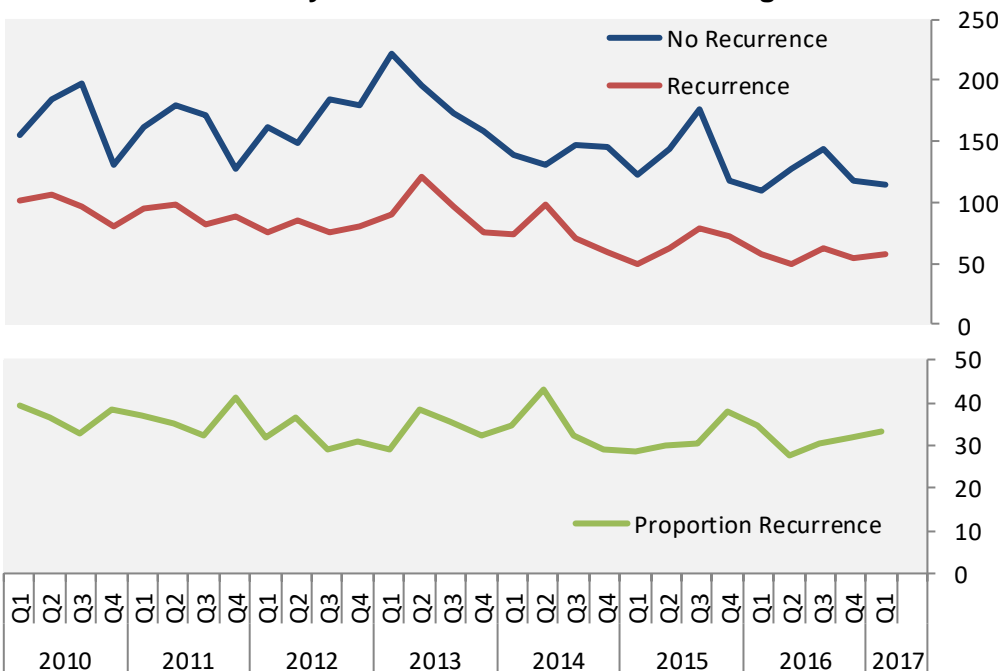
Incidence, prevalence and animal-level risk



Overall fall in incidence (blue line) since 2012, despite fluctuations. Q1-Q3 increase seen in 2016, 2017 and 2018.

Prevalence (green line) decreased between Q2 2012 and Q3 2014 but has increased slightly since, with some fluctuations.

Recurrence – how many closed incidents break down again?



Top chart shows incidents closed from Q1 2010 to Q1 2019. Blue line shows incidents that remained clear over subsequent 2 years, red line represents recurrence. Green line in bottom chart expresses recurrence as a percentage.

33% of incidents closed in Q1 2017 entailed a recurrence in the subsequent 2 years.

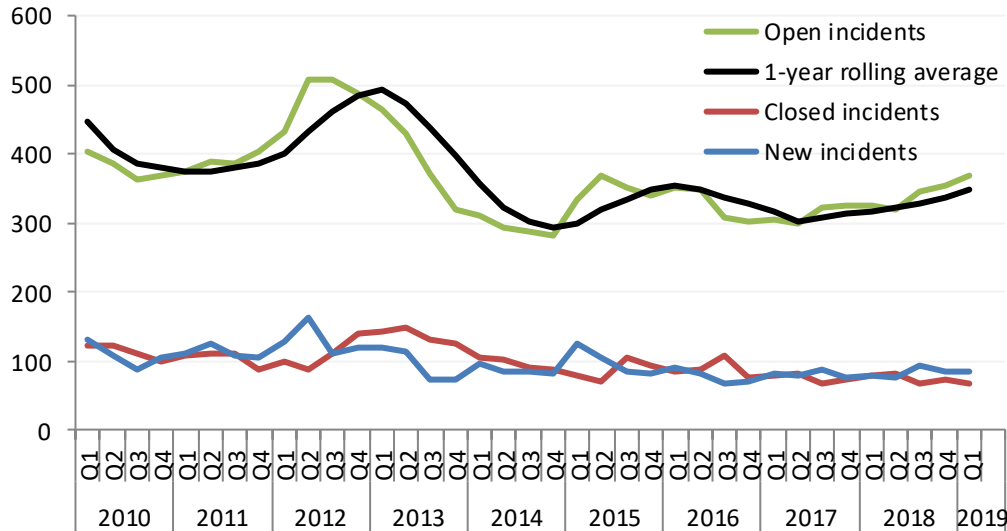
HIGH TB AREA – WEST

◀ BACK

Q1 2019 summary

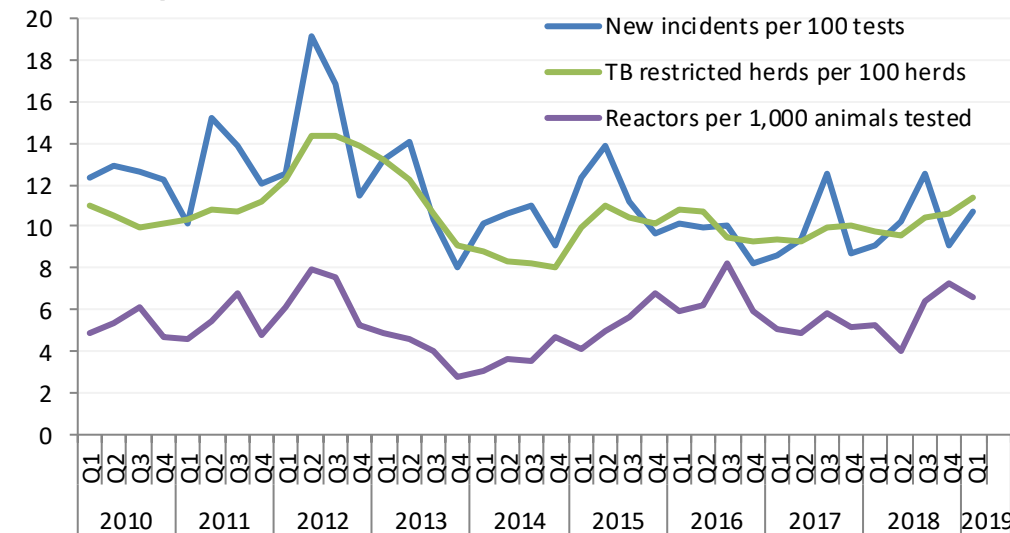
	Live Herds	New Incidents	Incidents Closed	Open Incidents	Reactors Disclosed	Q1 2010 to Q1 2019
High TB (West)	3,251	85	69	370 (16)	1,626	

New, closed and open incidents



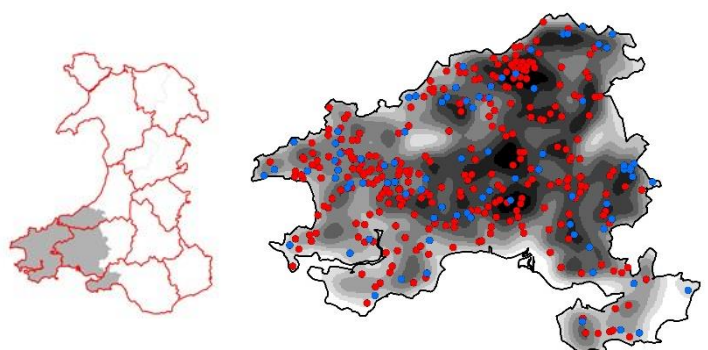
Sharp fall in open incidents in 2013, relatively steady thereafter. Steady increase in recent quarters.

Incidence, prevalence and animal-level risk



Fall in incidence between 2012 and 2013. Incidence levels remained relatively steady thereafter, with fluctuations.

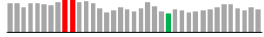
Fall in prevalence between 2012 and 2014 followed by a rise in the first half of 2015. Prevalence has increased in the last few quarters following a steady period.



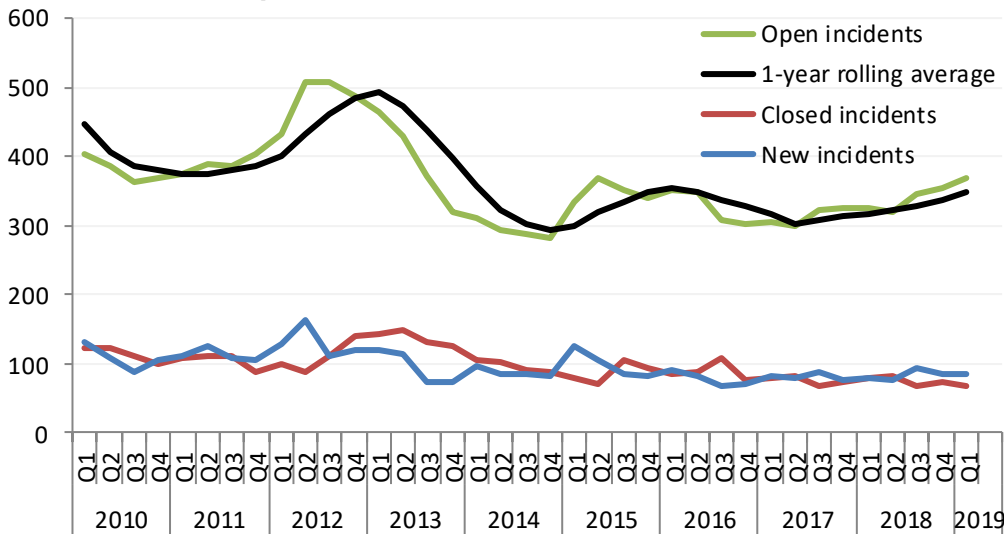
HIGH TB AREA – EAST

◀ BACK

Q1 2019 summary

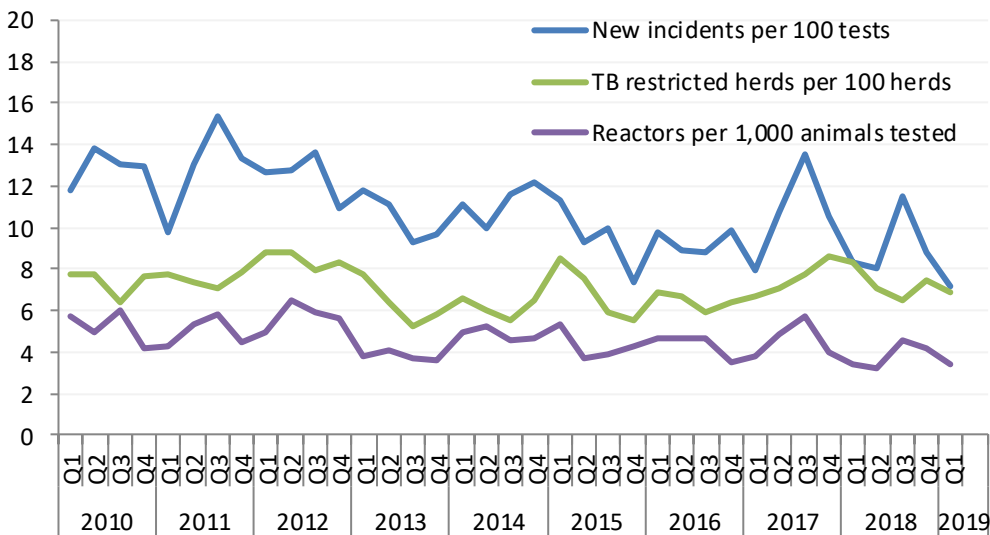
	Live Herds	New Incidents	Incidents Closed	Open Incidents	Reactors Disclosed	Q1 2010 to Q1 2019
High TB (East)	2,862	56	70	196 (-14)	435	

New, closed and open incidents



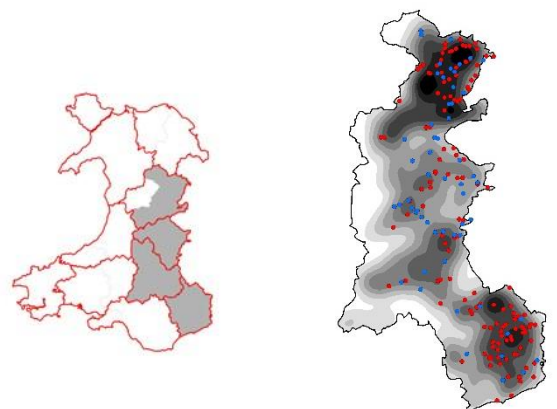
Recent increase in open incidents before a decrease in the first three quarters of 2018, followed by an increase to Q1 2019.

Incidence, prevalence and animal-level risk



Spike in incidence in Q3 2017. Incidence decreased following the spike with fluctuations.

Increase in herd prevalence measure from Q3 2016 to Q4 2017, decreases in first three quarters of 2018 with a slight increase to Q4 2018. Herd and animal prevalence relatively stable over the long-term.



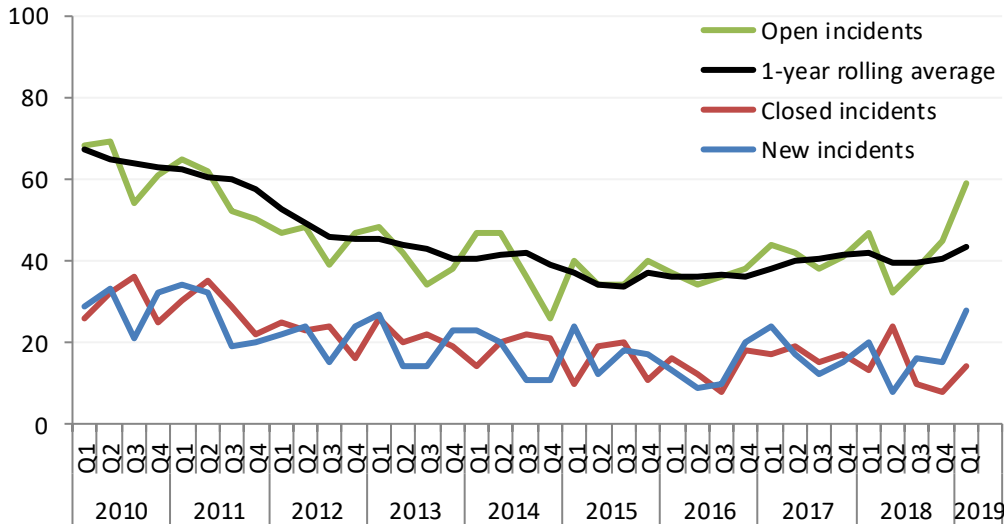
INTERMEDIATE TB AREA – MID

◀ BACK

Q1 2019 summary

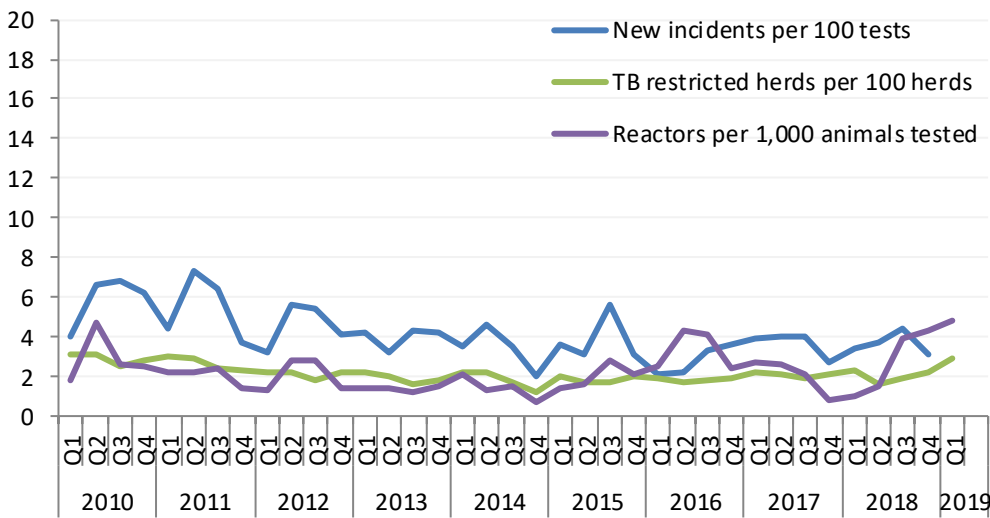
	Live Herds	New Incidents	Incidents Closed	Open Incidents	Reactors Disclosed	Q1 2010 to Q1 2019
Intermediate TB (Mid)	2,048	28	14	59 (14)	132	

New, closed and open incidents



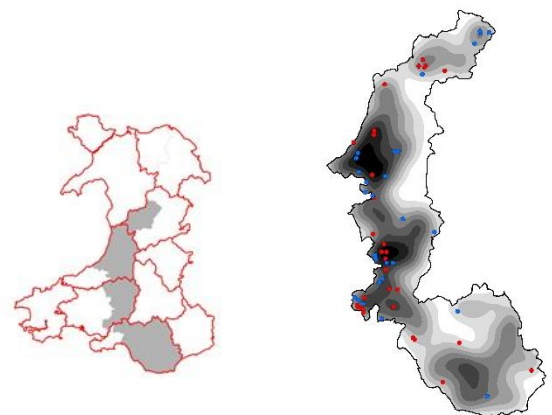
Sharp increase in open incidents following a long-term fall in new and open incidents.

Incidence, prevalence and animal-level risk



Steady decline in incidence, despite fluctuations.

Herd prevalence remains steady. Mid-2016 and Q3 2018 spike in reactors per 1,000 animals tested, which continued to increase slightly to Q1 2019.

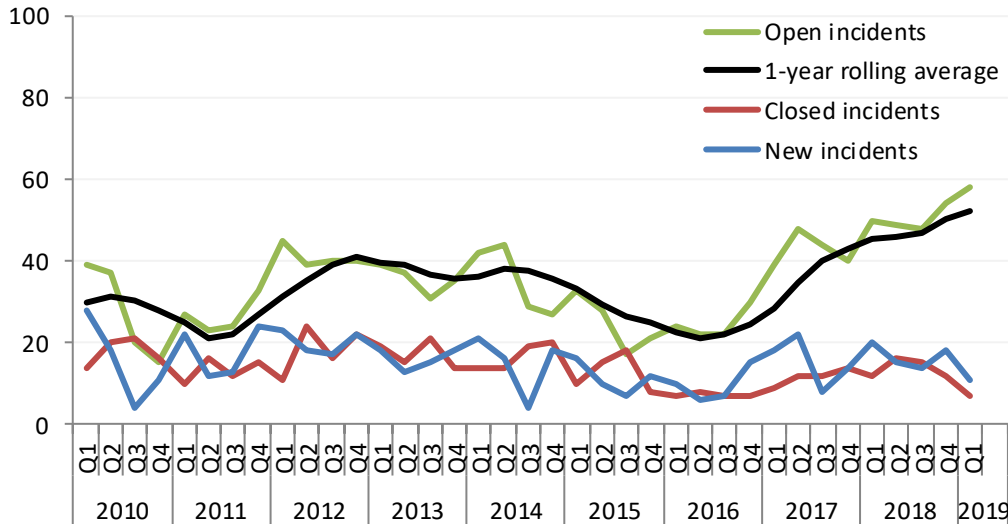


INTERMEDIATE TB AREA – NORTH ◀ BACK

Q1 2019 summary

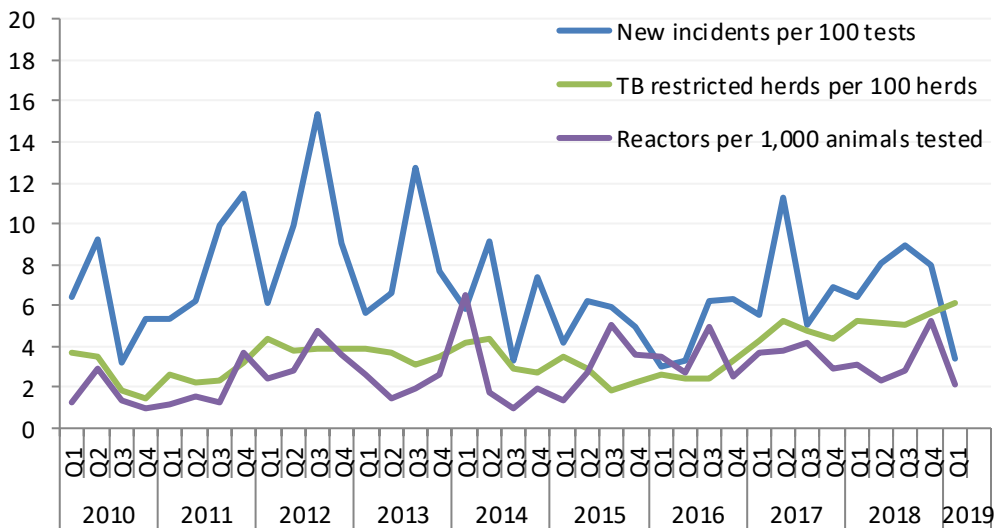
	Live Herds	New Incidents	Incidents Closed	Open Incidents	Reactors Disclosed	Q1 2010 to Q1 2019
Intermediate TB (North)	953	11	7	58 (4)	294	

New, closed and open incidents



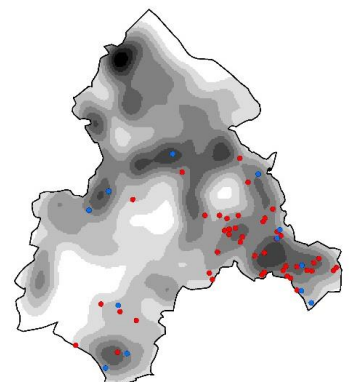
Sharp increase in open incidents after steady long-term fall.

Incidence, prevalence and animal-level risk



Sharp decrease in incidence in Q1 2019. This followed an increase in prior quarters driven by a cluster near English border.

Prevalence consistently between 2% and 4% until recently. It increased to 5% in Q2 2017 and to 6% in Q1 2019.



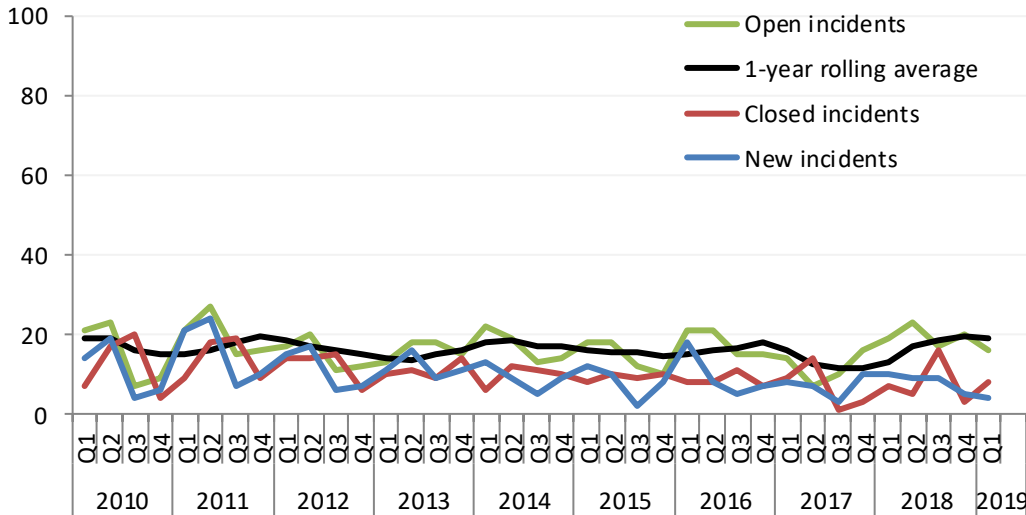
LOW TB AREA

◀ BACK

Q1 2019 summary

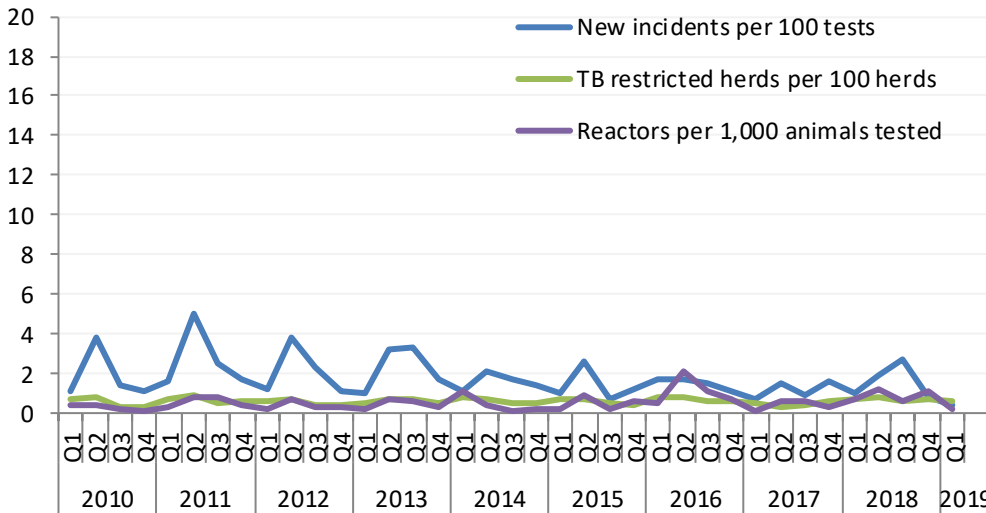
	Live Herds	New Incidents	Incidents Closed	Open Incidents	Reactors Disclosed	Q1 2010 to Q1 2019
Low TB	2,841	4	8	16 (-4)	14	

New, closed and open incidents



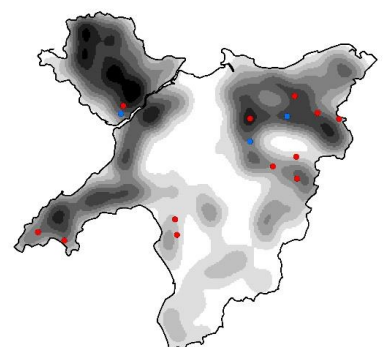
Recent increase in open incidents (Q2 2017 – Q2 2018), followed by a slight decrease. No discernible long-term trend in new, closed or open incidents.

Incidence, prevalence and animal-level risk

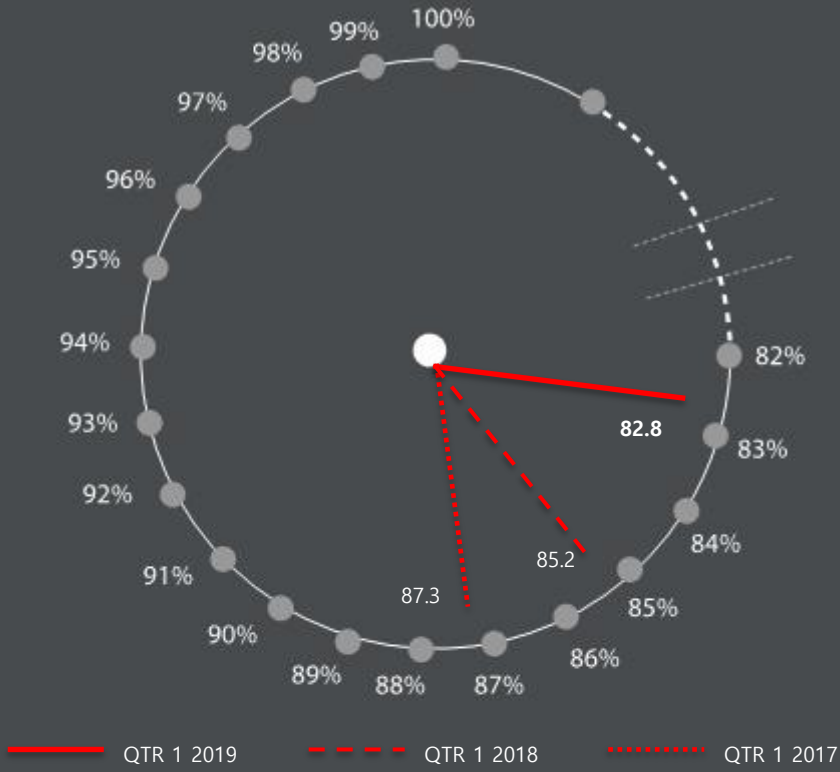


Persistently low levels of TB.

Incidence, prevalence and animal risk consistently the lowest in Wales.



Dairy Gauge 2,301 herds



Beef Gauge 9,236 herds

