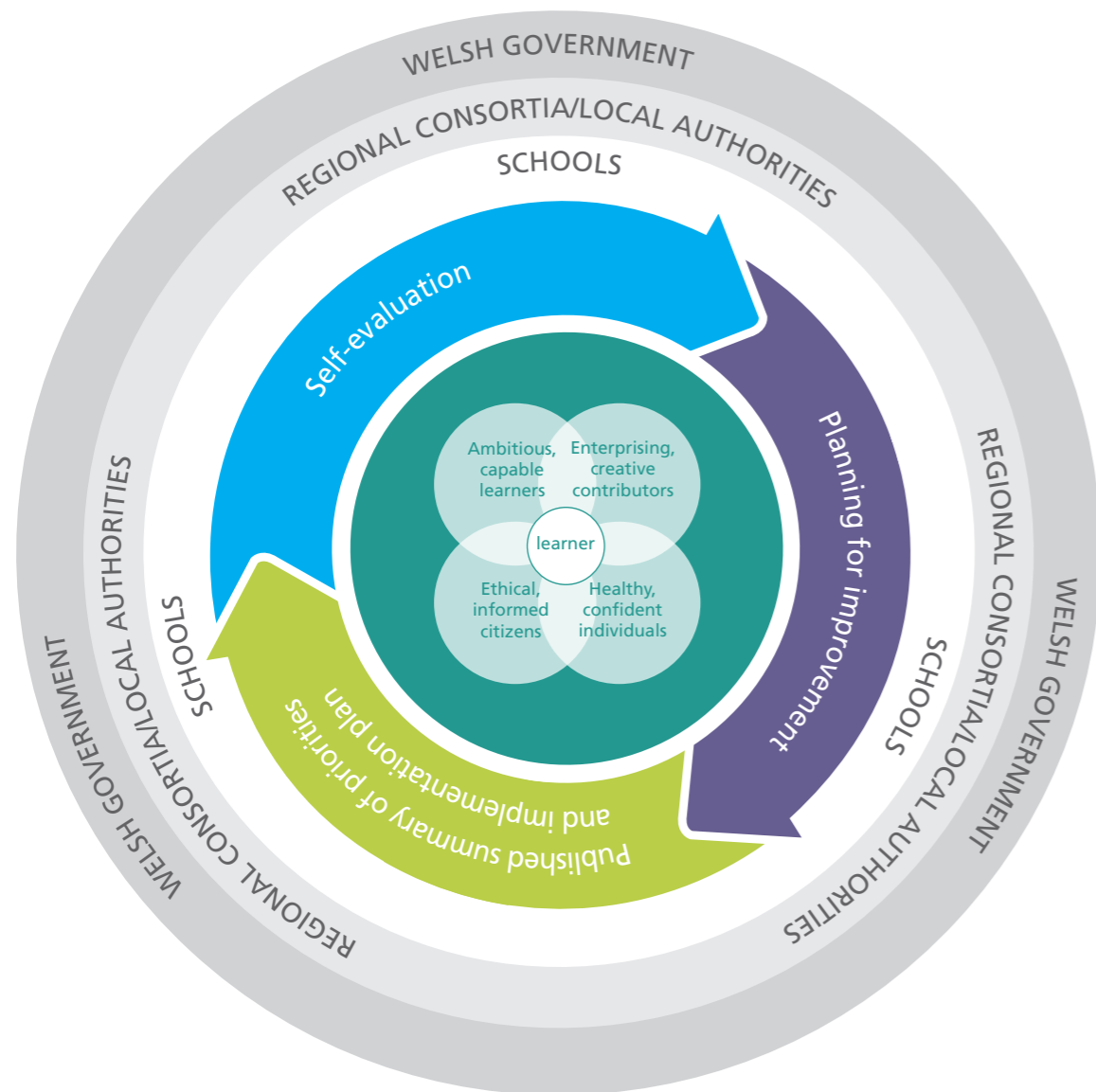


Draft evaluation and improvement (accountability) arrangements for Wales

Overview of arrangements

These new arrangements will help bring about the cultural change needed to support the realisation of the new curriculum. At their heart is robust and continuous self-evaluation for all tiers of the education system, along with professional dialogue to support learning and improvement, embed collaboration, build trust, drive self-improvement, and raise standards for all our learners.

Evaluation and improvement cycle



	Schools	Local authorities and Regional consortia	Welsh Government
Self-evaluation	Self-evaluate using the national self-evaluation for improvement toolkit to help schools identify their strengths and priorities for improvement, using a range of qualitative and quantitative data.	Self-evaluate against <i>Our national mission</i> priorities, corporate and strategic school improvement objectives, the delivery and quality of education, and agreed grant funding success criteria.	Self-evaluate against <i>Our national mission</i> priorities, regionally agreed school improvement objectives, and agreed grant funding success criteria.
Planning for improvement	Outcomes of the self-evaluation process to inform the school development plan.	Outcome of the self-evaluation process to inform the local authorities, corporate planning arrangements.	Outcome of the self-evaluation process to inform policy development and improvement planning arrangements.
Published summary of priorities and implementation plan	Implementation and support taken forward with peer engagement. School development plan priorities published.	Key findings and actions published together with corporate planning arrangements. Implementation and support taken forward with peer engagement.	Key findings and actions published together with business plan. Implementation and support taken forward with peer engagement.
Authentication	Regional consortia to authenticate the self-evaluation demonstrating it is a true and genuine reflection of the school's strengths and areas for development.	Challenge and review with Welsh Government. Council internal arrangements for engagement and governance.	Challenge and review with Welsh Government. Joint Committee engagement.
Inspection and advice	Validation through inspection and regulation.	Validation through inspection and regulation.	Validation through inspection and regulation. Democratic scrutiny from the National Assembly for Wales.