



Llywodraeth Cymru
Welsh Government

WALES TB DASHBOARD

QUARTER 1 2018

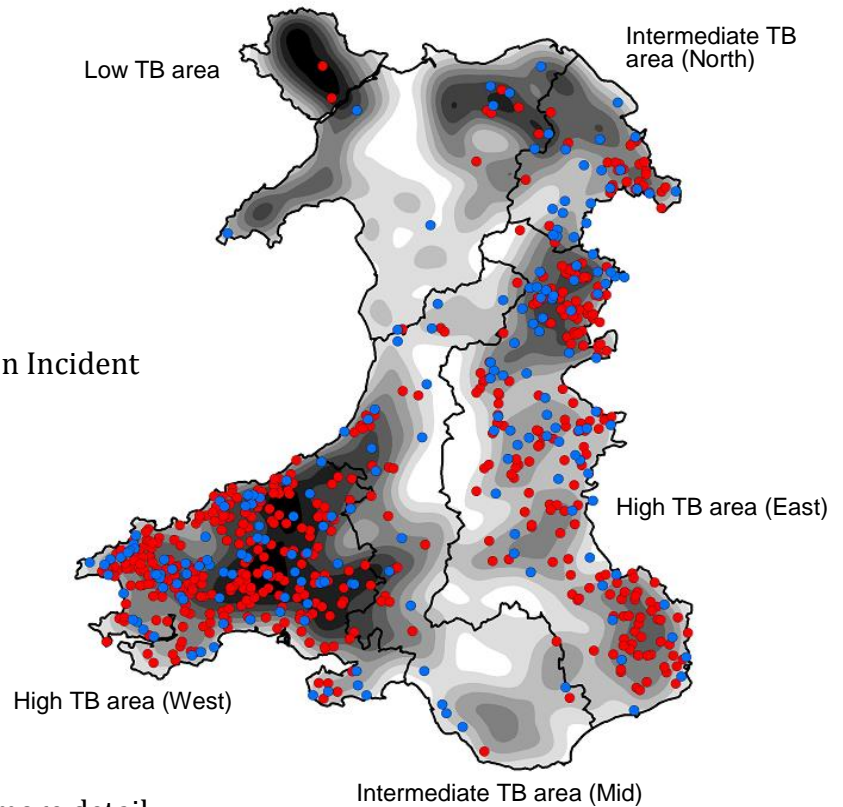
Figure 1: New Incidents in Q1 2018 and open Incidents as at the end of the quarter

● Q1 2018 New Incident ● Q1 2018 Open Incident

Low ← Cattle Herd → High

Lowest TB levels in **North West Wales**, highest in **South West**

Most TB breakdowns in Wales are in the high TB areas in the East and West



CLICK ON REGIONS BELOW to explore in more detail

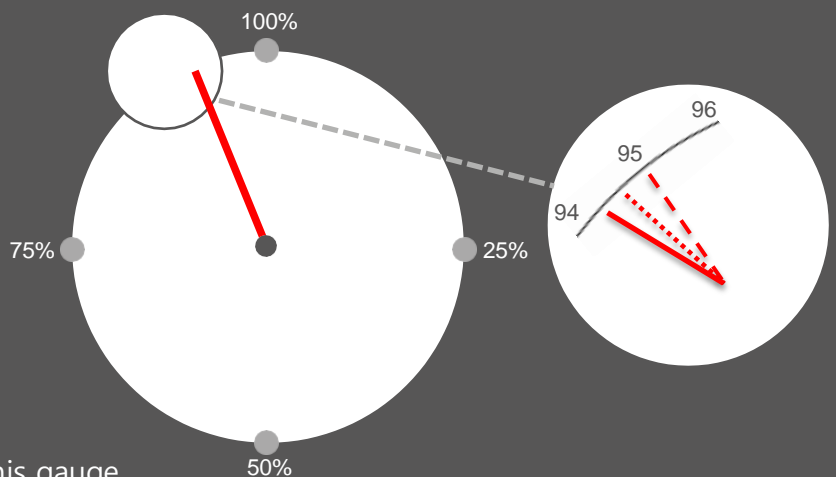
	Live Herds	New Incidents	Incidents closed	Open Incidents	Reactors Disclosed	Q1 2010 to Q1 2018
Wales	11,978	193	177	677 (+16)	1,993	
High TB (West)	3,322	78	78	325 (0)	1,250	
High TB (East)	2,824	65	67	236 (-2)	427	
Intermediate TB (Mid)	2,042	20	13	47 (+7)	59	
Intermediate TB (North)	956	20	12	50 (+8)	188	
Low TB	2,834	10	7	19 (+3)	69	

Sparklines show open cases, adjusted by herd numbers, on a quarterly basis since 2010. Red bar indicates highest level, green bar lowest.

Officially TB free Gauge Q1

94.3%

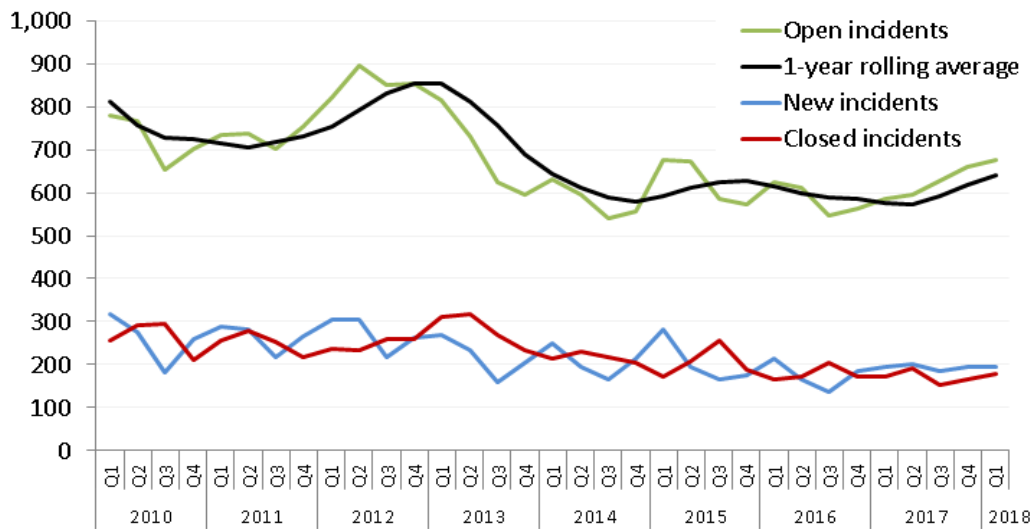
of herds were TB free in Q1 2018.
This is a fall compared with the previous year (95.0%)



— QTR 1 2018 - - - QTR 1 2017
..... QTR 1 2016

[CLICK HERE](#) for Beef and Dairy versions of this gauge

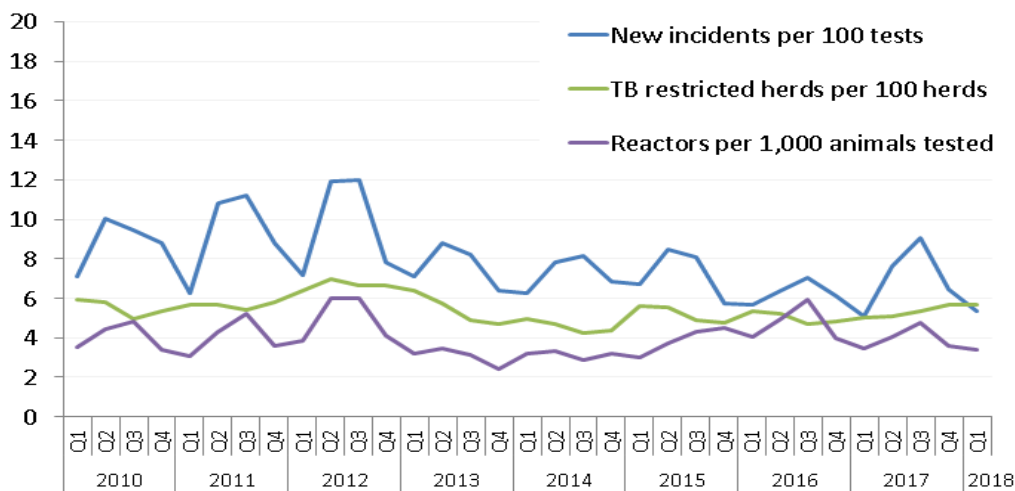
New, closed and open incidents



Fall in open incidents since 2012 but steady increase since Q3 2016.

In Q1 2018 there were 16 more new incidents than closed incidents, meaning a net 2% increase in open incidents.

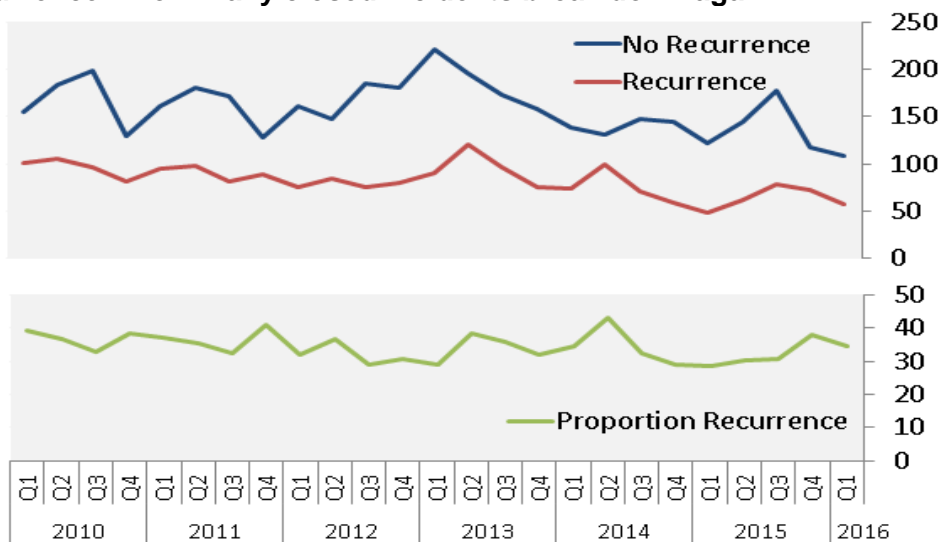
Incidence, prevalence and animal-level risk



Overall fall in incidence since 2012, despite fluctuations.

Prevalence decreased between Q2 2012 and Q3 2014 but has increased slightly since, with some fluctuations.

Recurrence – how many closed incidents break down again?



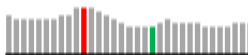
Top chart shows incidents closed from Q1 2010 to Q1 2018. Blue line shows incidents that remained clear over subsequent 2 years, red line represents recurrence. Green line in bottom chart expresses recurrence as a percentage.

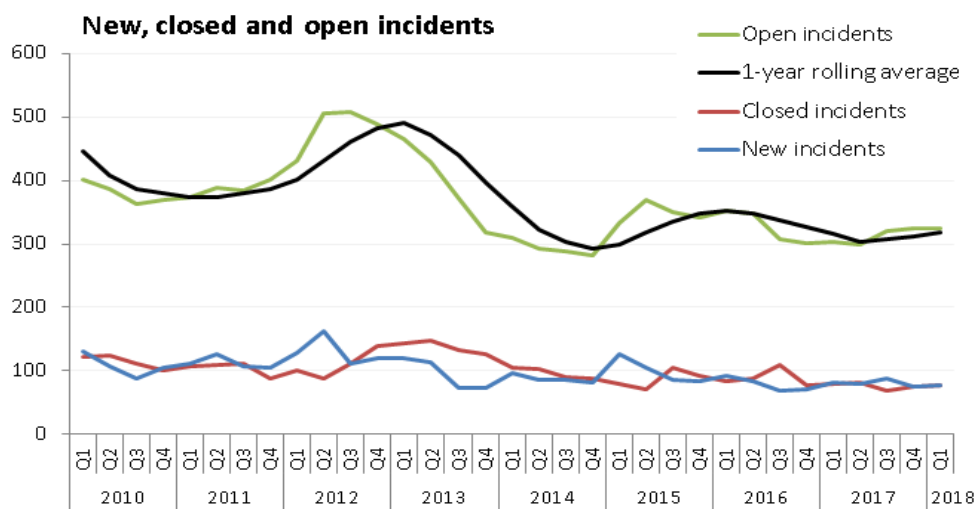
35% of incidents closed in Q1 2016 entailed a recurrence in the subsequent 2 years.

HIGH TB AREA – WEST

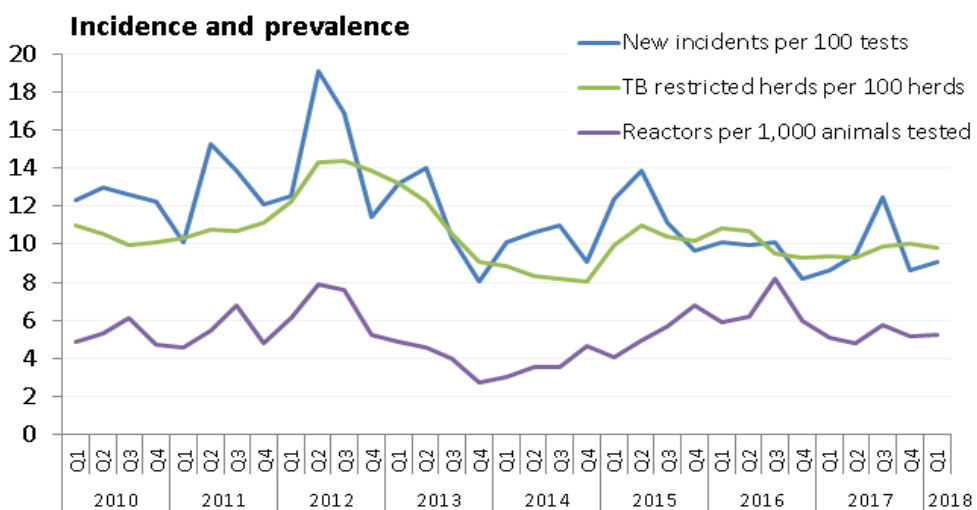
[← BACK](#)

Q1 2018 summary

	Live Herds	New Incidents	Incidents Closed	Open Incidents	Reactors Disclosed	Q1 2010 to Q1 2018
High TB (West)	3,322	78	78	325 (0)	1,250	

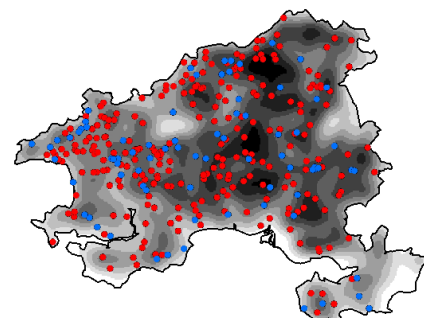


Sharp fall in open incidents in 2013, relatively steady thereafter.



Falls in incidence and prevalence since 2012.

Spike in incidence measure in Q3.

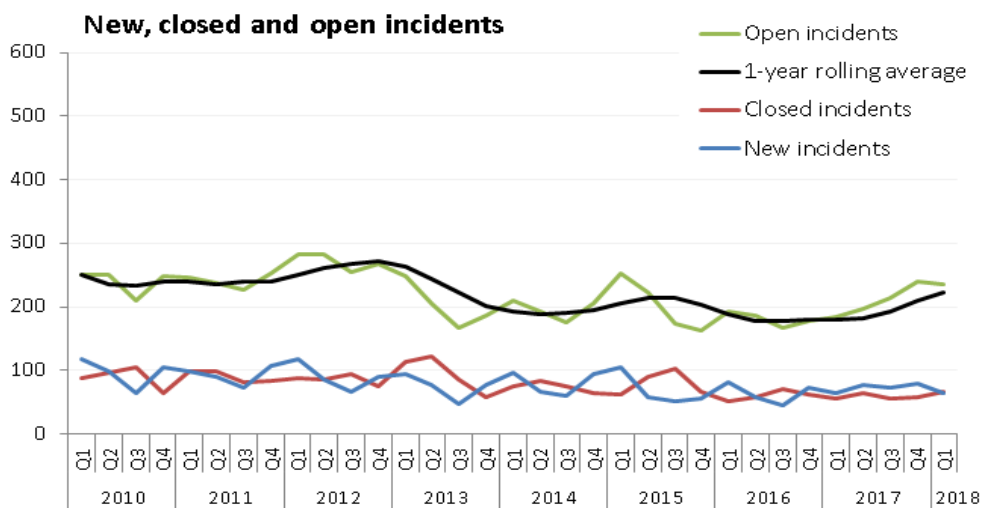


HIGH TB AREA – EAST

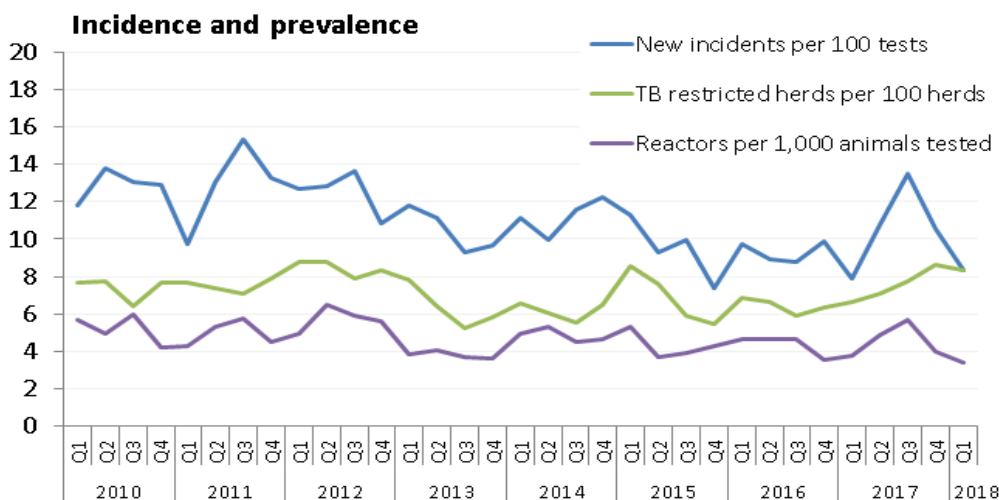
[← BACK](#)

Q1 2018 summary

	Live Herds	New Incidents	Incidents Closed	Open Incidents	Reactors Disclosed	Q1 2010 to Q1 2018
High TB (East)	2,824	65	67	236 (-2)	427	

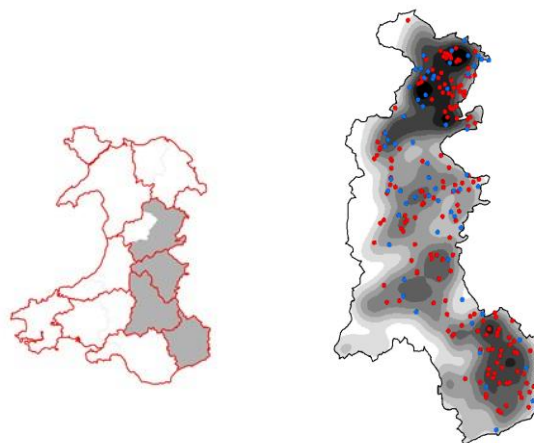


Recent increase in open incidents.



Recent spike in incidence measure.

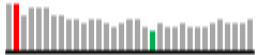
Recent increase in herd prevalence measure. Herd and animal prevalence relatively stable over the long-term.

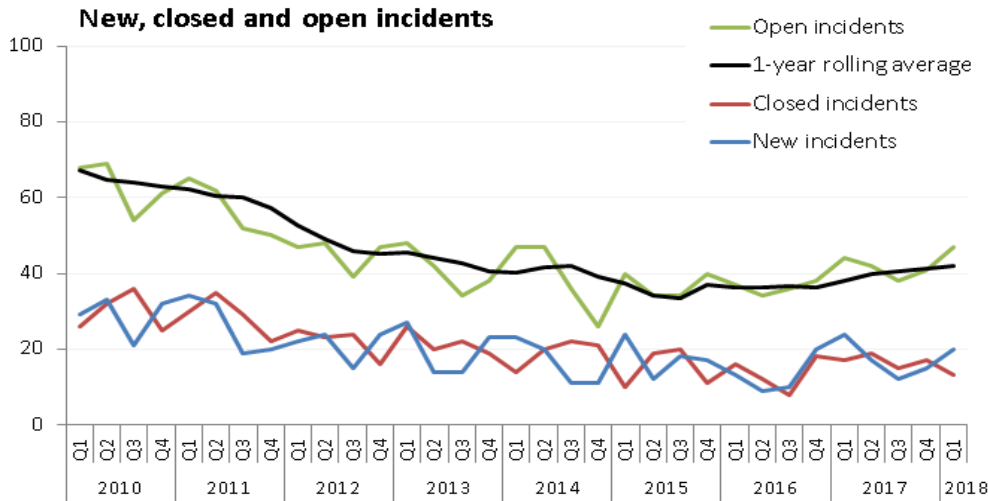


INTERMEDIATE TB AREA – MID

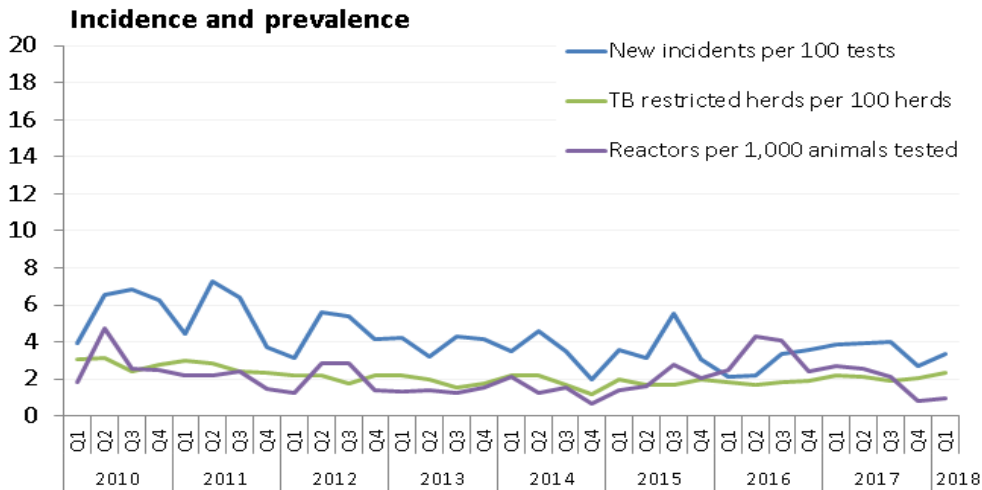
◀ BACK

Q1 2018 summary

	Live Herds	New Incidents	Incidents Closed	Open Incidents	Reactors Disclosed	Q1 2010 to Q1 2018
Intermediate TB (Mid)	2,042	20	13	47 (+7)	59	

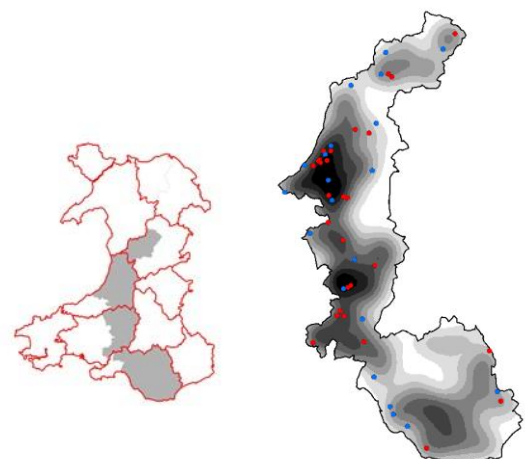


Long-term fall in new and open incidents.



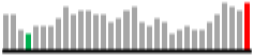
Steady decline in incidence measure, despite fluctuations.

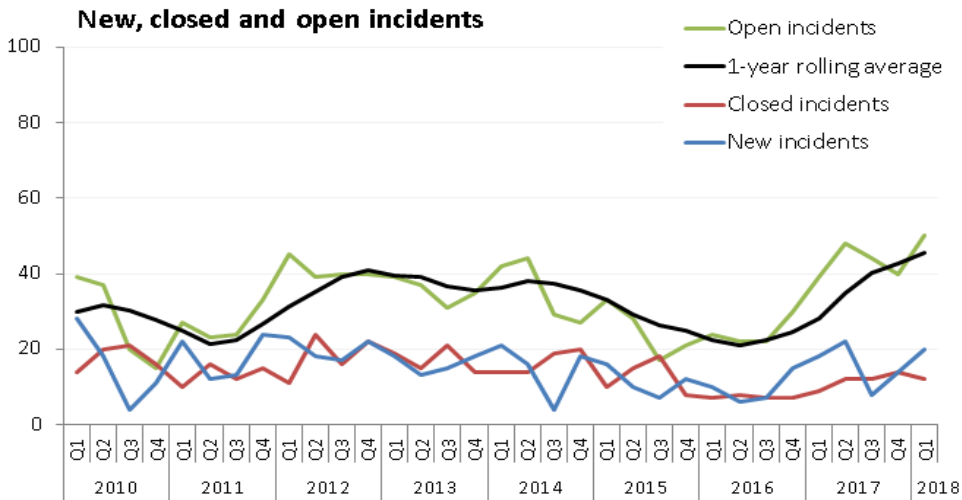
Mid-2016 spike in reactors per 1,000 animals tested.



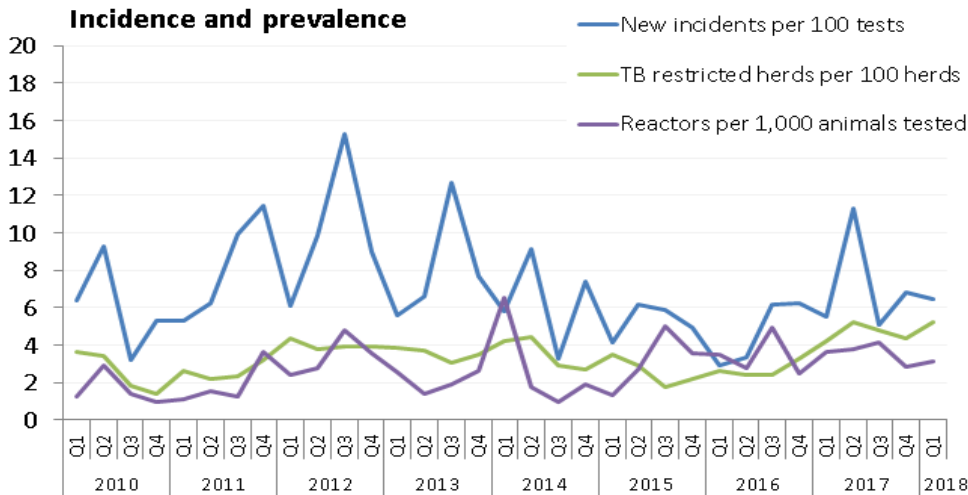
INTERMEDIATE TB AREA – NORTH ◀ BACK

Q1 2018 summary

	Live Herds	New Incidents	Incidents Closed	Open Incidents	Reactors Disclosed	Q1 2010 to Q1 2018
Intermediate TB (North)	956	20	12	50 (+8)	188	

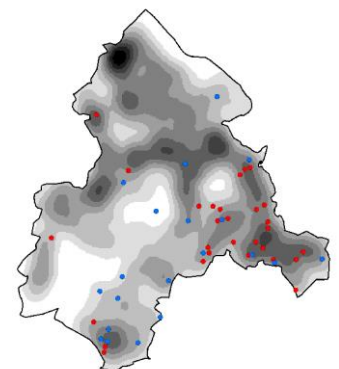


Sharp increase in open incidents after steady long-term fall.



Sharp increase in incidence measure after long-term downward trend – increase driven by cluster near English border.

Prevalence consistently between 2% and 4% until recently.

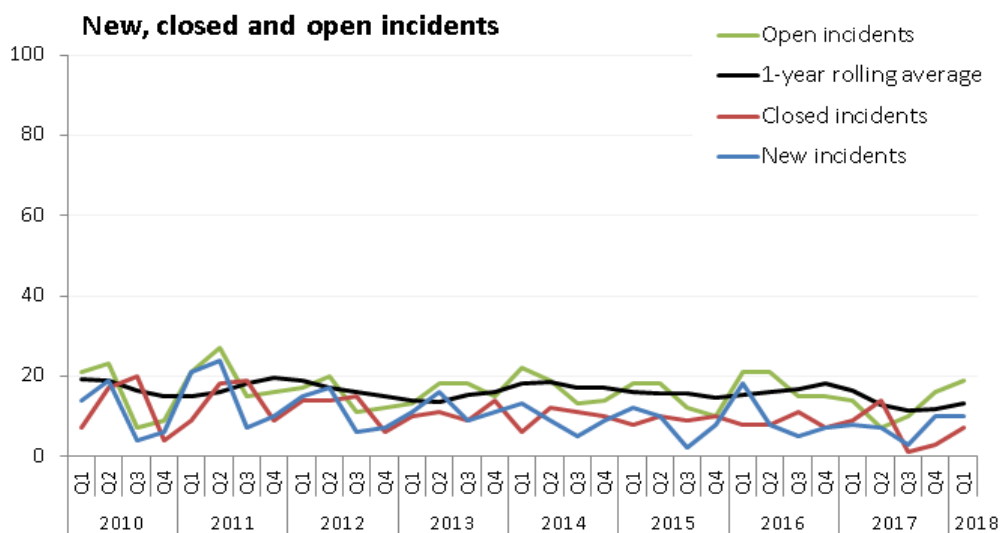


LOW TB AREA

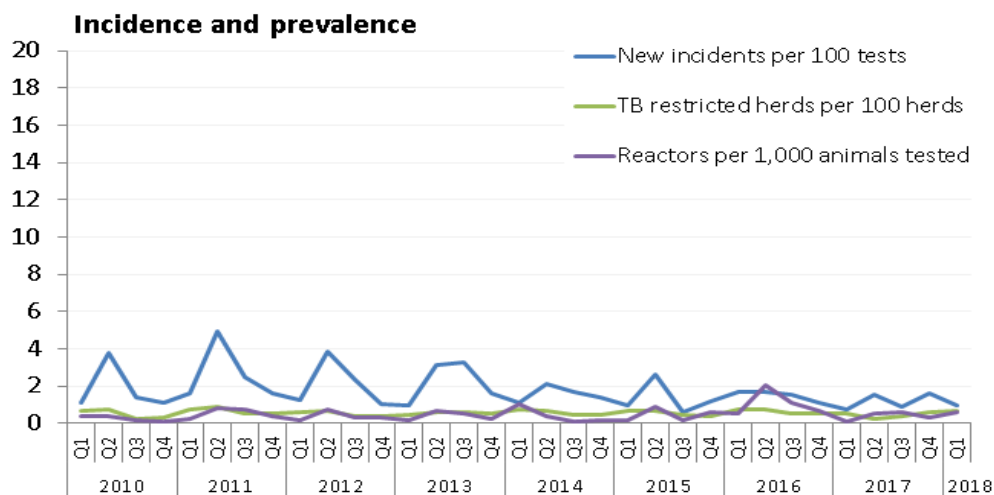
[← BACK](#)

Q1 2018 summary

	Live Herds	New Incidents	Incidents Closed	Open Incidents	Reactors Disclosed	Q1 2010 to Q1 2018
Low TB	2,834	10	7	19 (+3)	69	

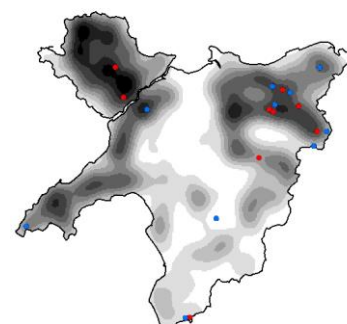


No discernable long-term trend in new, closed and open incidents.

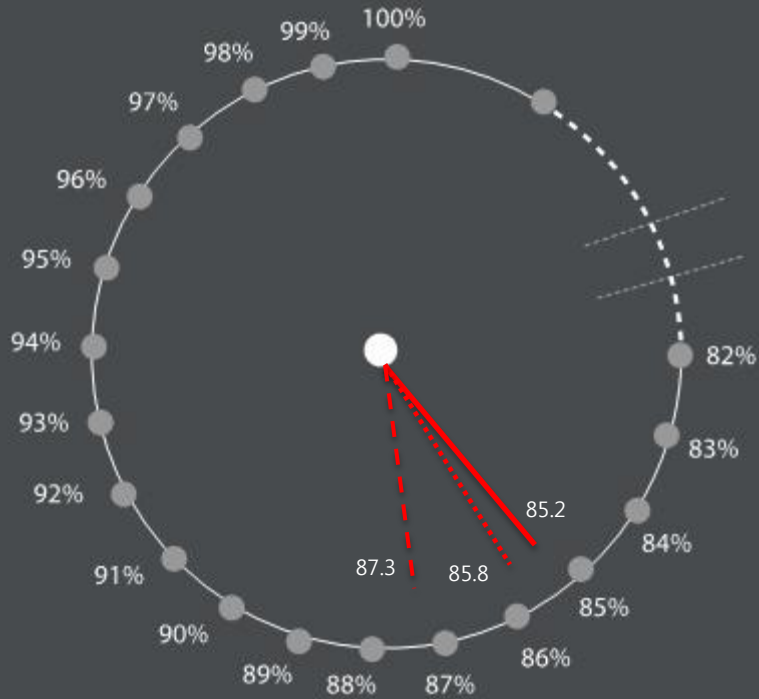


Persistently low levels of TB.

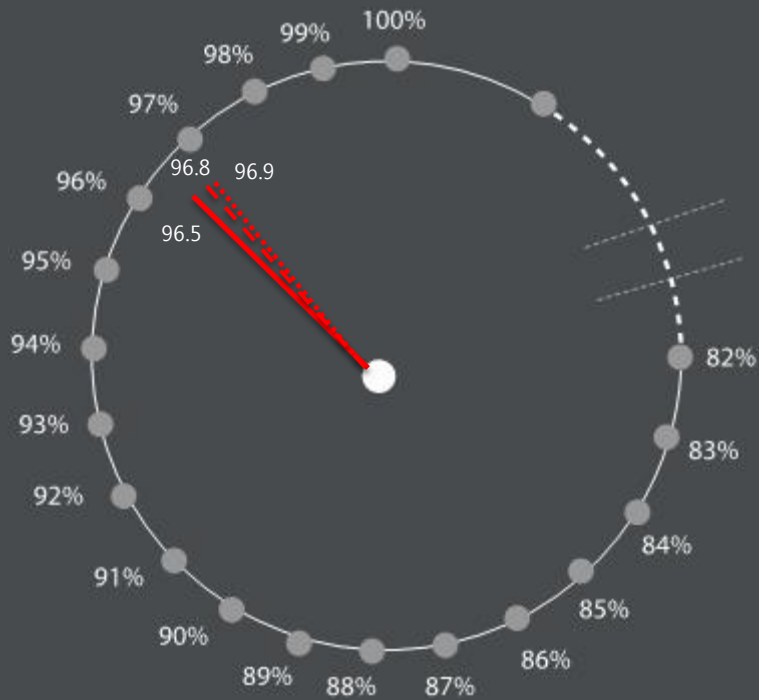
Incidence, prevalence and animal risk consistently the lowest in Wales.



Dairy Gauge 2,341 herds



Beef Gauge 9,292 herds



— OTR 1 2018 - - - OTR 1 2017 OTR 1 2016