

Rolling out our Metro
gov.wales/metro



Welcome to Metro

Metro is a new transport system that will transform the way we travel around the Cardiff Capital Region. It will provide faster, more frequent and joined-up services using trains, buses and light rail.

Metro will bring benefits to passengers, link communities together and help transform the economy. It will have a positive social, economic and environmental effect. It will also shape our region's identity.

High frequency

Metro will run at least four services an hour across the whole network when needed and even more on busy sections. This gives a 'turn up and go' experience for passengers using vehicles designed for speed and capacity.

Extendable

Metro is designed so it can grow to make it even more accessible. New stations, new routes, increased frequencies – in future, the network can bring better public transport to more communities and economic centres.

Integration

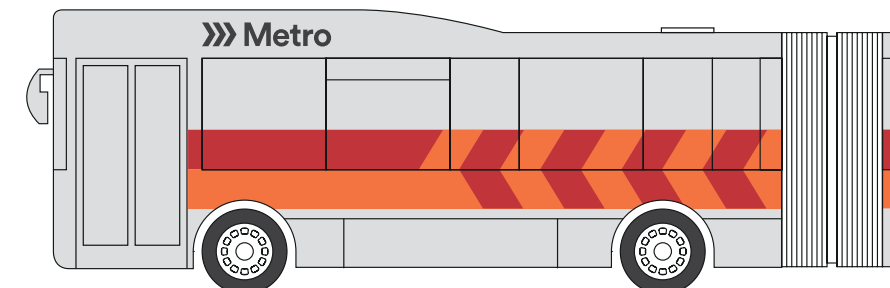
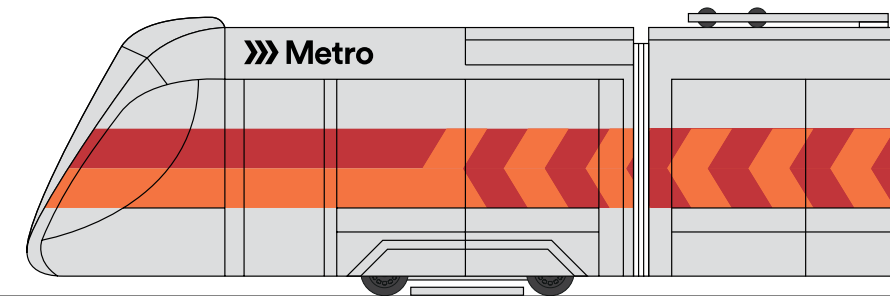
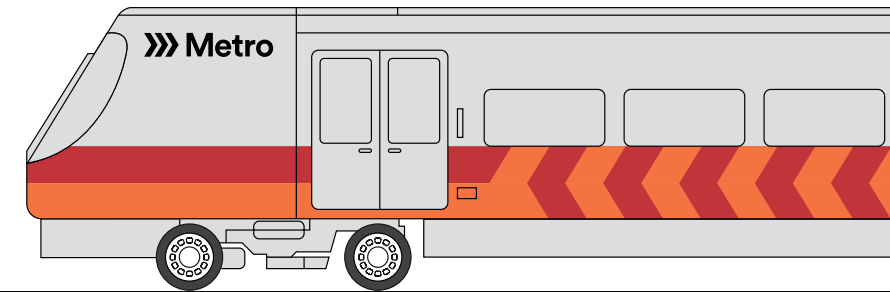
Metro combines heavy rail, light rail and buses to deliver a seamless network. With just one ticket, people will be able to move quickly and easily across the region. It also links with active travel – cycling and walking – to create a completely integrated network.

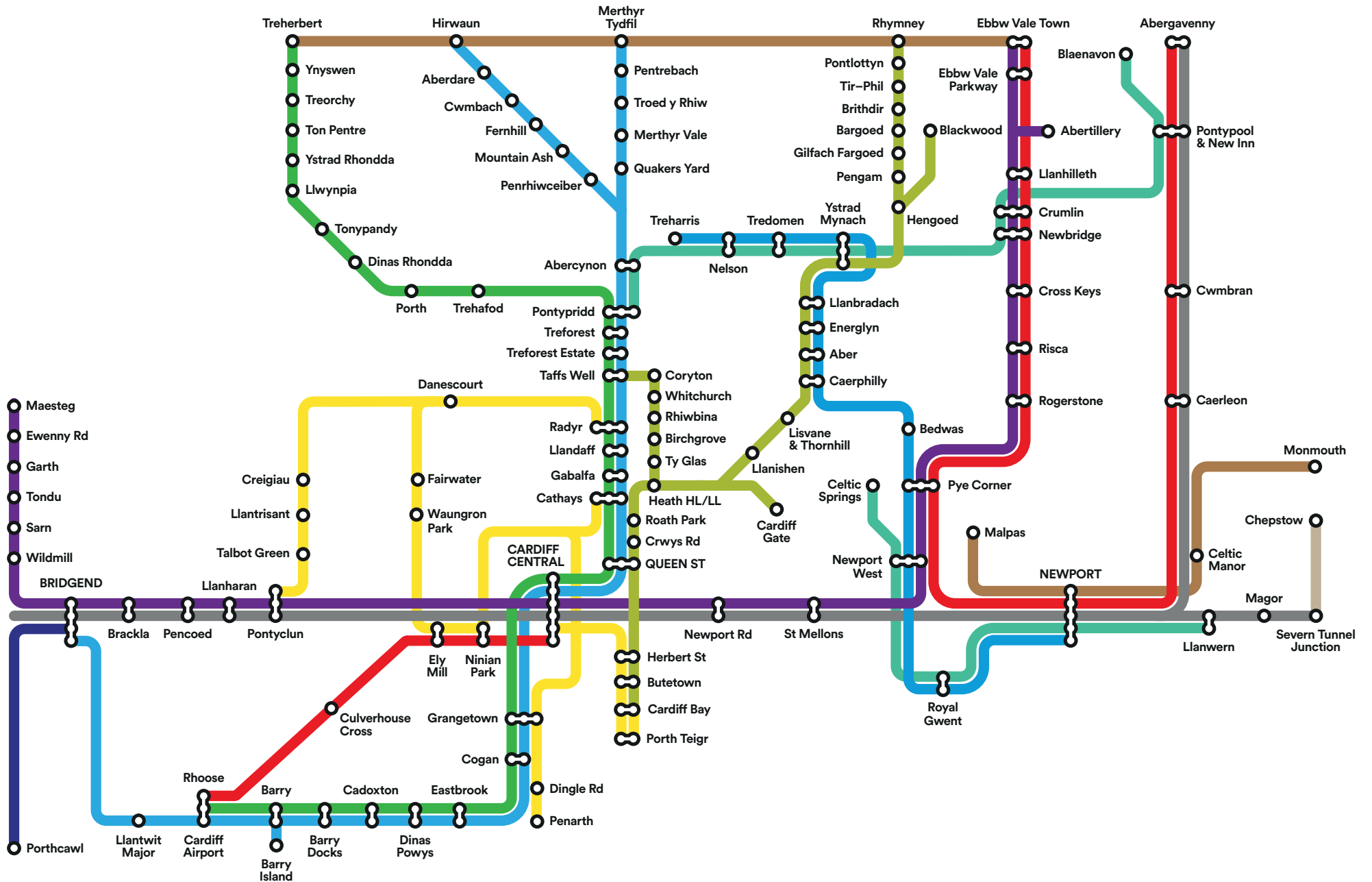
Regeneration

Metro will deliver better passenger facilities and community focal points around key stations, and stimulate opportunities for more strategic development and regeneration across the region.

We've produced this leaflet to share our emerging Metro plans with everyone who has an interest in Metro, from passengers to transport professionals.

Metro branding and transport livery





Why we need Metro

As our population grows, we need a first-class public transport system that will keep us moving forward for generations to come.

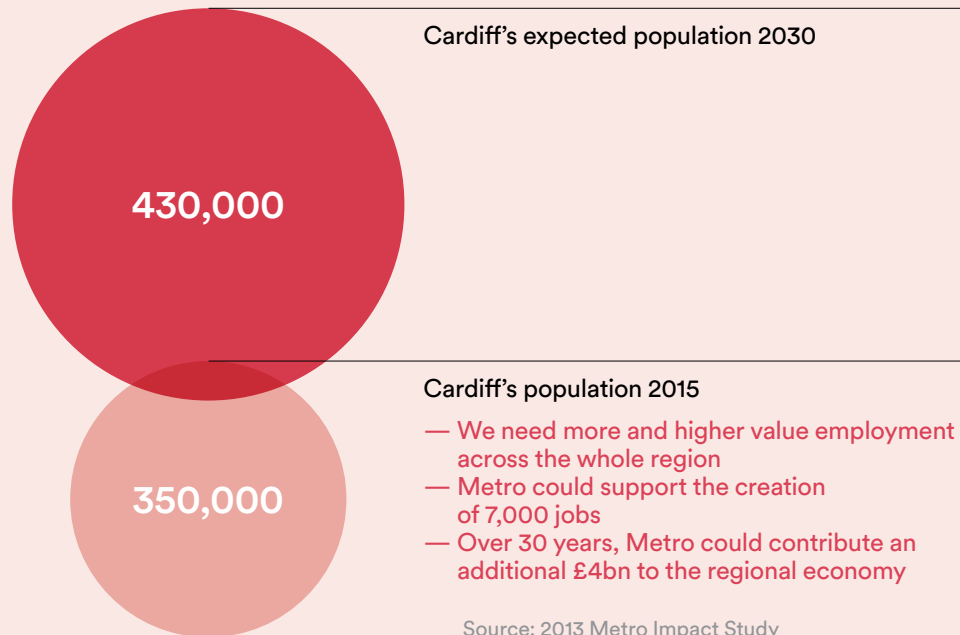
Cardiff Capital Region

The Cardiff Capital Region already has a vibrant economy with a great quality of life. We have the largest TV production centre outside London. Our financial services sector is growing rapidly.

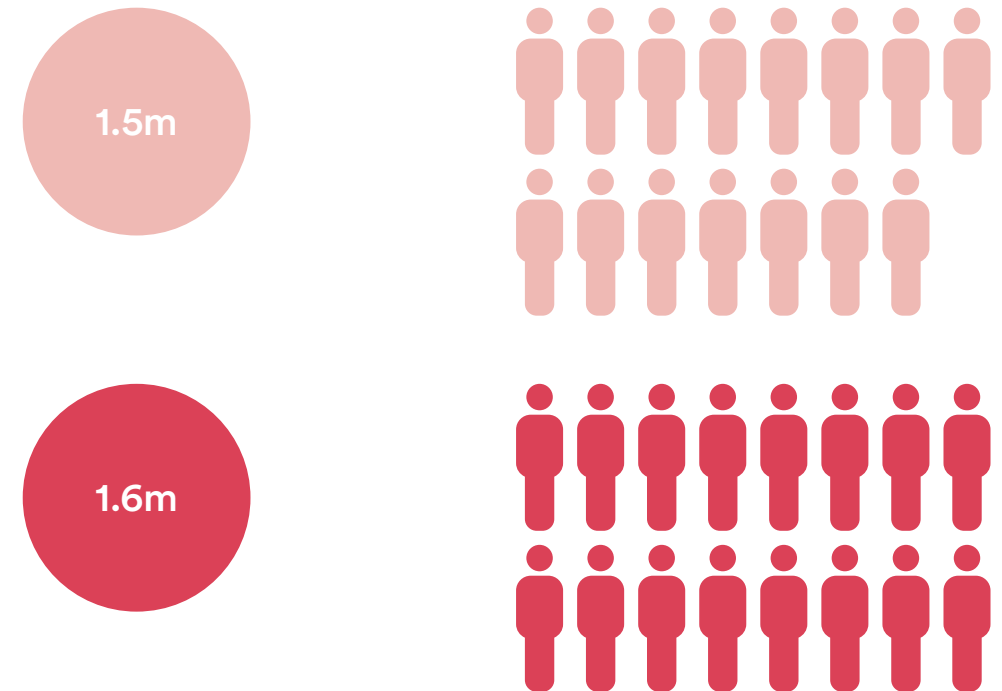
We have some of the best sports stadia and cultural institutions in the world. A major international convention centre is being developed in Newport. We have hosted global events such as the Ryder Cup and NATO conference. Cardiff University now ranks in the top five UK Higher Education institutions for research.

For our economy to grow and flourish, there's a widespread recognition that the Cardiff Capital Region needs major investment in its transport infrastructure.

Cardiff's population is expected to grow to over 430,000 by 2030



The population of the wider Cardiff Capital Region is expected to grow from 1.5m to 1.6m over the next 20 years¹



¹ Stats Wales Population Projections: <http://bit.ly/1KTC9Wj>

Transport for the future: the three main options

Public transport comes in many forms, but these are the three main options that are likely to form the backbone of Metro. We think that light rail, especially, could play an important part – but it's up to the transport industry to suggest the best possible solutions based on the objectives we have.



HR

Heavy Rail

We will upgrade our rail network using modern diesel and electric rolling stock. The newest train designs offer an improved passenger experience, faster boarding and more efficient operations.



LR

Light Rail

Light rail vehicles (or trams) are ideal for urban and suburban transport, allowing more frequent and faster services. They can carry large numbers of people and move easily, either on traditional railway track or on rails placed in streets.



BRT

Bus Rapid Transit

This bus-based system is popular around the world, and feels more like a train than a traditional bus. Passengers buy tickets at special stations, so boarding is quick and easy, and buses usually run in exclusive lanes to avoid traffic. Services are frequent, fast and efficient.



Where are we now?

A Welsh Government Transport Company called 'Transport for Wales' has been established to help deliver the next Wales and Borders rail franchise and the next phase of the Metro project. Combining these two projects allows us to maximise reinvestment into the railway and deliver excellent services.

In a statement in March 2015, The First Minister said, 'This is a game-changing project and it cannot be done in a half-hearted way. It's got to be done properly ... we fully understand this is a once-in-a-lifetime opportunity that could transform the economic prospects of up to one million people in Wales.'

As we develop our procurement strategy, we aim to reflect this ambition. We are taking an 'outcome and output' based approach: we will tell the industry what we want to see in terms of better access to jobs and services, long-term transformational economic effects, more frequent and faster services, better quality, and environmental improvements.

This gives bidders the maximum opportunity to innovate to help us deliver the transport network that the Cardiff Capital Region deserves.

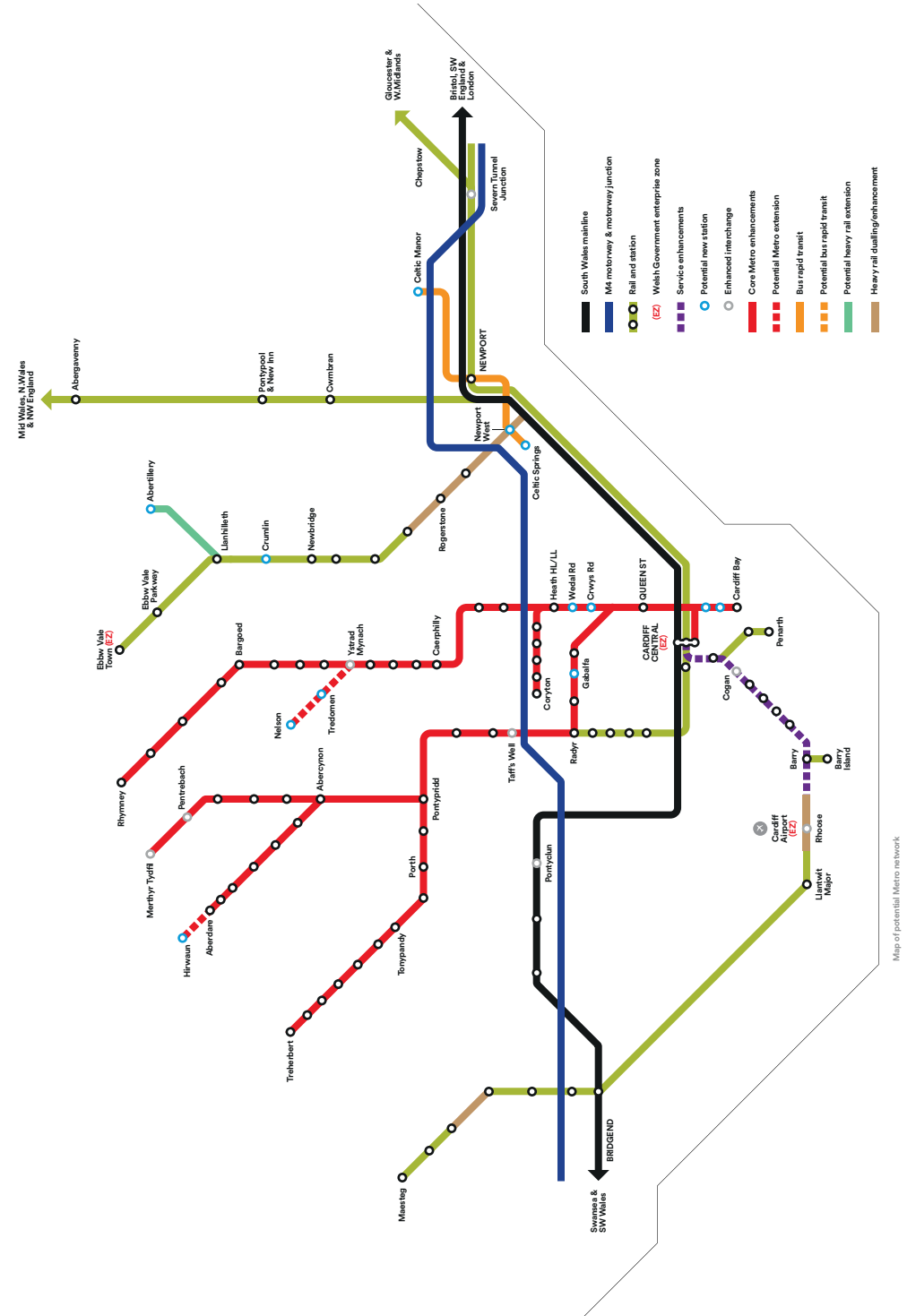
Metro Phase 1

We are already delivering a £77million investment in a package of Metro Phase 1 infrastructure improvements, including Ebbw Vale Town station, which was opened by the First Minister in June 2015. This route has proved to be very popular with some 800,000 journeys annually. We have also opened a new station at Pye Corner, improved rail and bus stations across the region, and created new schemes for bus priority lanes, active travel and park-and-ride.

Metro Phase 2

These are some of the projects that we're considering for the next phase:

- Station improvements
- Better interchange facilities
- Infrastructure enhancements on the core Valley Lines north of Cardiff, to allow more frequent and faster services
- Extra stations and network extensions – for example Gabalfa and Crwys Road
- Ebbw Vale Line improvements and a new Abertillery spur
- We're considering direct services to Newport from the Ebbw Valley
- Newport Rapid Transit to provide enhanced public transport services, linking with the rail network and key locations such as Celtic Manor and Celtic Springs
- Further enhancements on the Maesteg Lines and to services on the Vale of Glamorgan lines to Rhose/Cardiff Airport





Welcome to the future

Metro Phase 3 and beyond

We're asking the transport industry to come up with bright new ideas that will transform the way we travel around our region. These ideas will help us to award the new Metro contract, along with the Wales and Borders contract, in 2017.

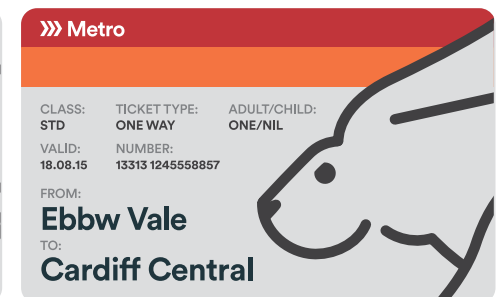
The actual shape of Metro in the future will depend on how much money is available, and where best to spend that money. But here are some projects we're considering:

- New stations at St Mellons, Newport Road, Llanwern, Newport West, Magor, Caerleon, Ely Mill and Crumlin
- Extending the core network to places like Nelson and Blackwood
- A direct link between Caerphilly and Newport
- Bus rapid transit for cross-valley connectivity
- New routes from Cardiff city centre to the northwest of the city and into Rhondda Cynon Taf
- A direct link from Cardiff Central to Cardiff Bay
- Extending the Bay branch further into Cardiff Bay

Metro smart card



Metro one-day pass



The details presented in this booklet are illustrative and for public information only. They do not provide confirmation of any specific schemes, nor do they restrict or constrain our procurement strategy or what bidders may propose in any procurement process.

