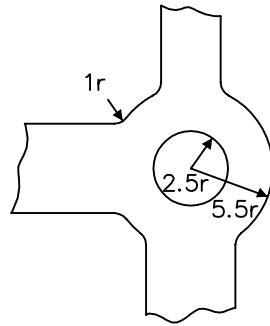


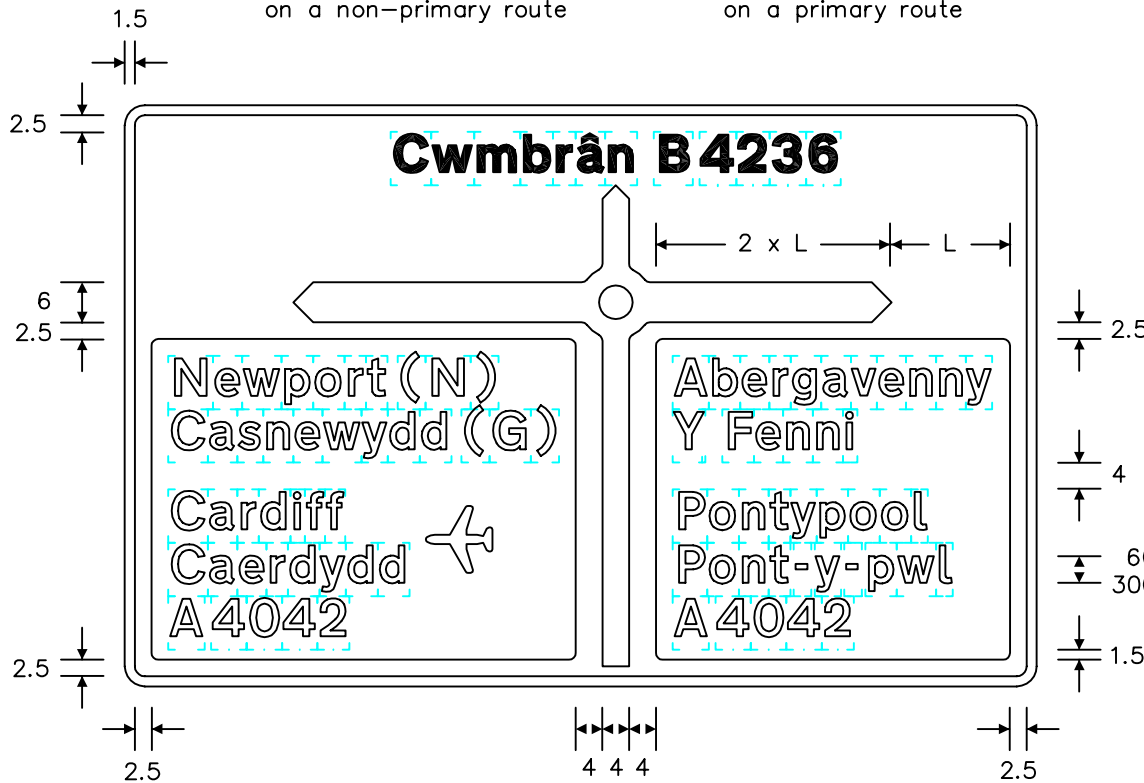
Mini-roundabout on a non-primary route



Mini-roundabout on a primary route

Notes: -

1. The legends are from the Transport Heavy and Transport Medium alphabets at the 'x'-heights shown.
2. Details of the aeroplane symbol are given on drawing S30.
3. The outlines of the tiles do not form part of the sign.
4. The colours are as follows: -
 Background _____ White
 Border & route symbol _____ Black
 Legend _____ Black (Transport Heavy)
 Primary route panel: - Background _____ Green
 Legend _____ White (Transport Medium)
 Route number _____ Yellow (Transport Medium)
 Symbol _____ White
5. The illumination of the sign must accord with the requirements of the current 'Traffic Signs Regulations and General Directions'.
6. The 'x'-heights shown are given in millimetres, all other dimensions are given in stroke widths (i.e. 1s/w = 1/4'x'-height).
7. The sign is designed in accordance with the current design rules.
8. The order of languages may be reversed if required.



REVISIONS	
1.	Redesigned, no. changed from 722 3.6.97
2.	Redrawn & notes amended 16.8.00
3.	Redrawn & notes amended 16.6.04
4.	Notes amended 24.5.07
Before using this drawing, confirm with RNM3 Division that it has not been superseded.	
Drn.	A.T.I.
Appd.	
Chkd.	Appl. date 12.11.83
Issue: 24.5.07	
Scale: Photo-reduced	
Title	
Non-Primary Route Directional Sign	
MINI-ROUNDBOULT WITH EXITS TO A NON-PRIMARY ROUTE AND A PRIMARY ROUTE IN TWO DIRECTIONS, ONE OF WHICH LEADS TO AN AIRPORT	
WELSH ASSEMBLY GOVERNMENT	
Drwg. no.	WAG/P 2119