



Llywodraeth Cymru  
Welsh Government

# WALES TB DASHBOARD

## QUARTER 3 2017

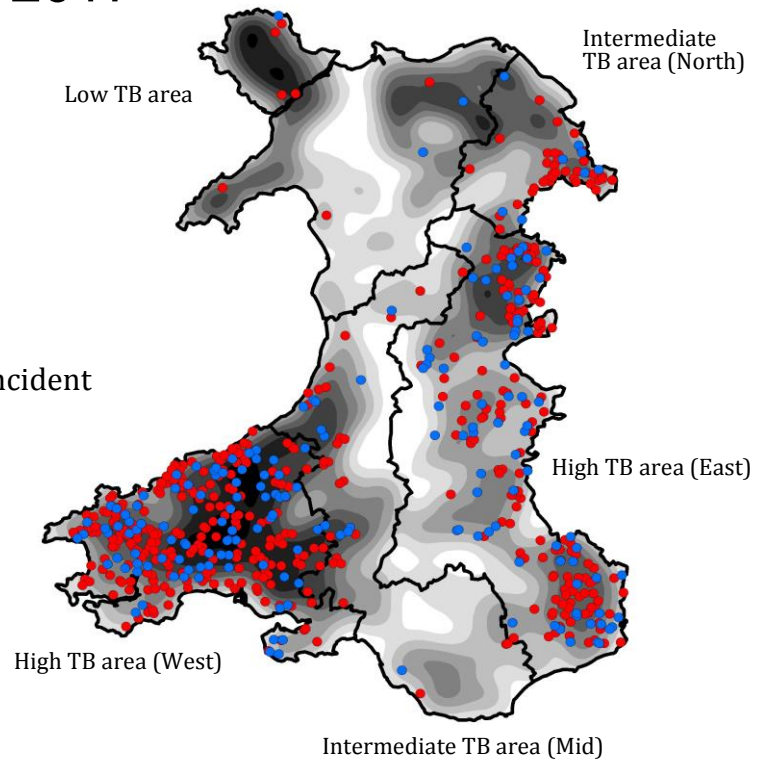
**Figure 1: New Incidents in Q3 2017 and open Incidents as at the end of the quarter**

● Q3 2017 New Incident ● Q3 2017 Open Incident

Low ← Cattle Herd → High

Lowest TB levels in **North West Wales**, highest in **South West**

Most TB breakdowns in Wales are in the high TB areas in the East and West



**CLICK ON REGIONS BELOW** to explore in more detail

	Live Herds	New Incidents	Incidents closed	Open Incidents	Reactors Disclosed	Q1 2010 to Q3 2017
Wales	11,651	184	152	628 (+32)	2,145	
High TB (West)	3,236	88	69	321 (+19)	1,277	
High TB (East)	2,770	73	55	215 (+18)	582	
Intermediate TB (Mid)	1,991	12	15	38 (-3)	81	
Intermediate TB (North)	921	8	12	44 (-4)	180	
Low TB	2,773	3	1	10 (+2)	25	

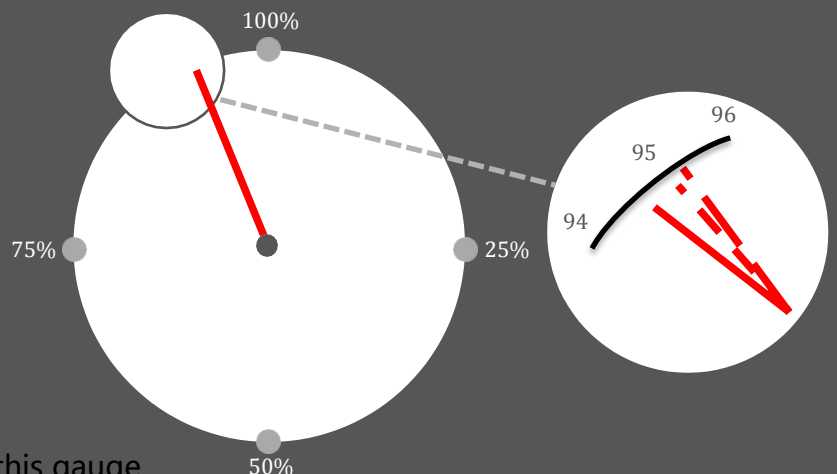
Sparklines show open cases, adjusted by herd numbers, on a quarterly basis since 2010. Red bar indicates highest level, green bar lowest.

### Officially TB free Gauge Q3

# 94.6%

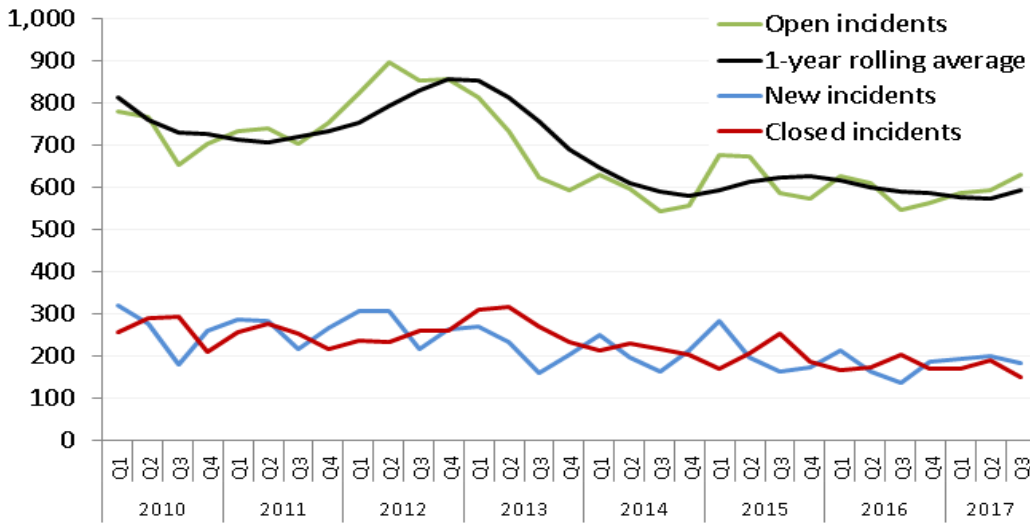
of herds were TB free in Q3 2017.  
This is a fall compared with the previous year (95.3%)

— QTR 3 2017 — QTR 3 2016 - - - QTR 3 2015



[CLICK HERE](#) for Beef and Dairy versions of this gauge

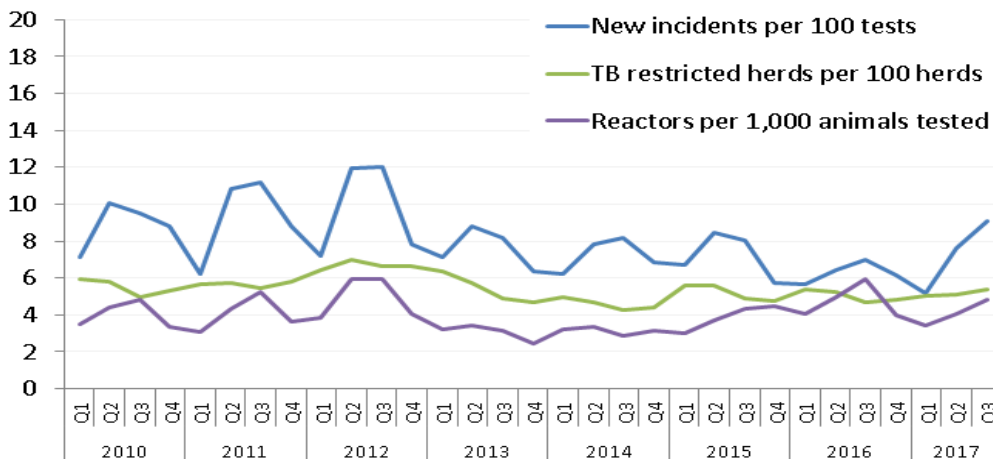
## New, closed and open incidents



Fall in open incidents since 2012

In Q3 there were 32 more new incidents than closed incidents, meaning a net 5% increase in open incidents

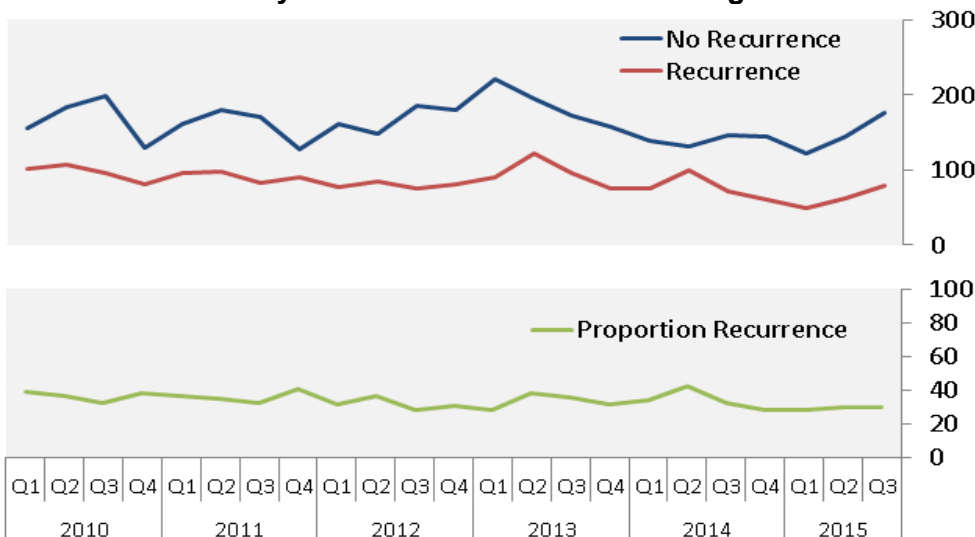
## Incidence, prevalence and animal-level risk



Falls in incidence and prevalence since 2012

Recent increase in incidence measure

## Recurrence – how many closed incidents break down again?




Top chart shows incidents closed from Q1 2010 to Q3 2017. Blue line shows incidents that remained clear over subsequent 2 years, red line represents recurrence. Green line in bottom chart expresses recurrence as %

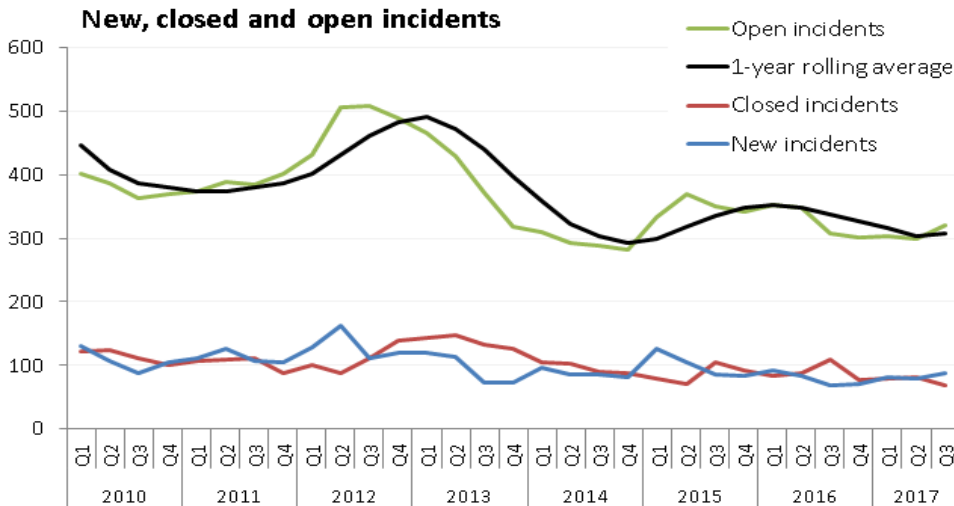
Recurrence rates relatively flat in recent years. 31% of incidents closed in Q3 2015 entailed a recurrence in the subsequent 2 years

# HIGH TB AREA – WEST

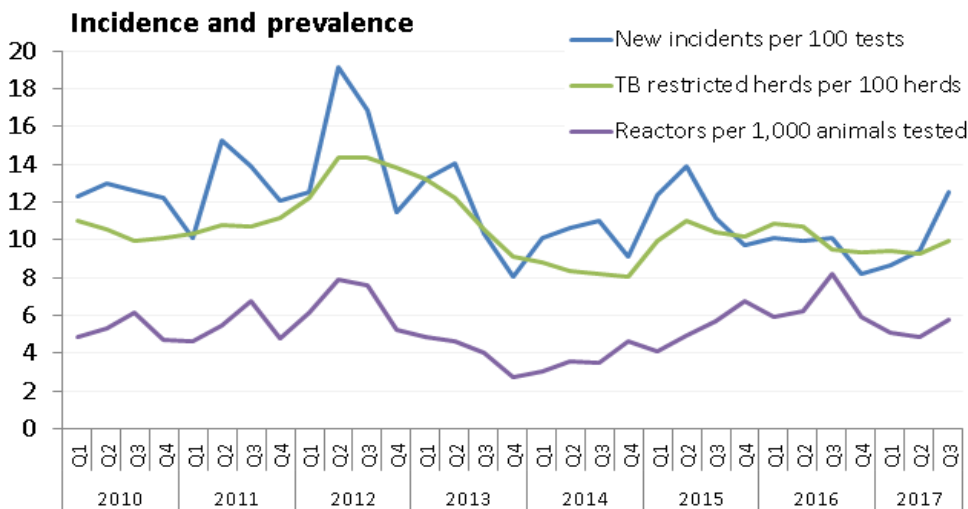
◀ BACK

## Q3 2017 summary

	New Herds	New Incidents	Incidents closed	Open Incidents	Reactors Disclosed	QI 2010 to Q3 2017
High TB (West)	3,236	88	69	321 (+19)	1,277	

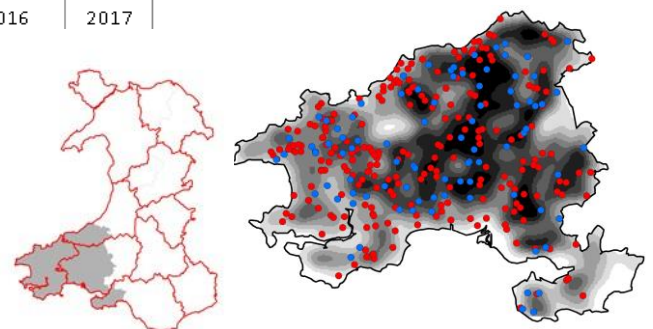


Sharp fall in open incidents in 2013, relatively steady thereafter



Falls in incidence and prevalence since 2012

Recent spike in incidence measure

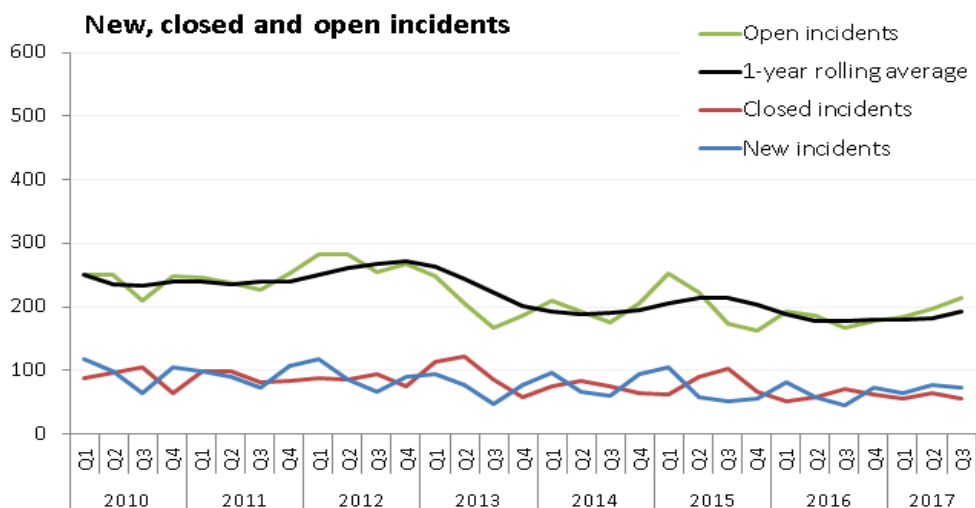


# HIGH TB AREA – EAST

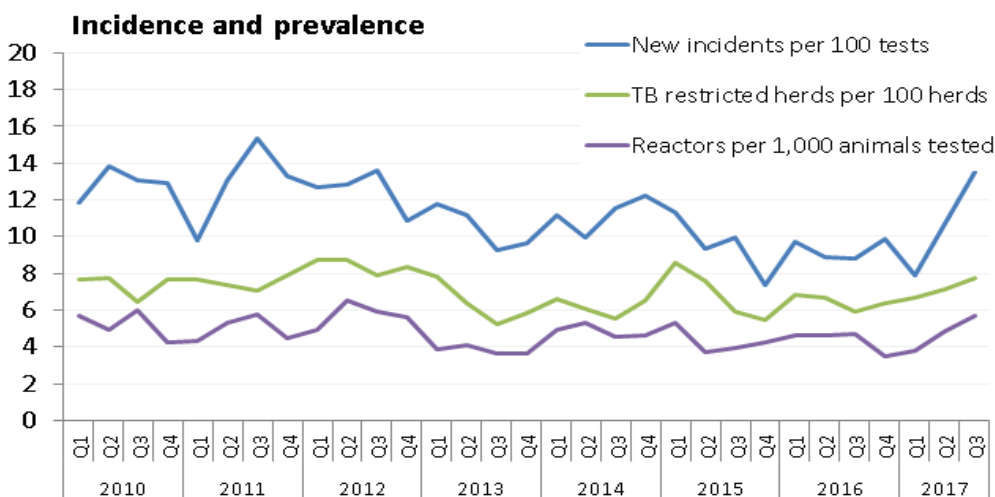
◀ BACK

## Q3 2017 summary

	New Herds	New Incidents	Incidents closed	Open Incidents	Reactors Disclosed	Q1 2010 to Q3 2017
High TB (East)	2,770	73	55	215 (+18)	582	

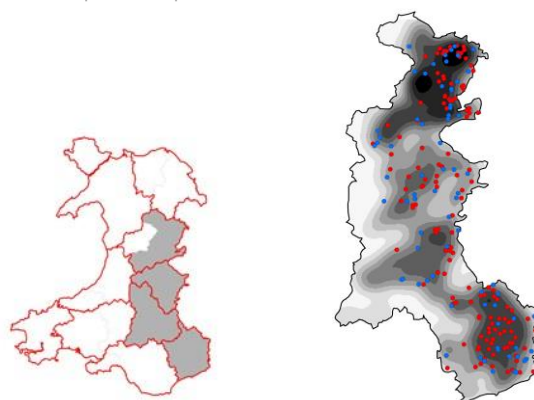


Steady fall in open incidents since 2012



Recent spike in incidence measure

Herd and animal prevalence relatively stable over the long-term

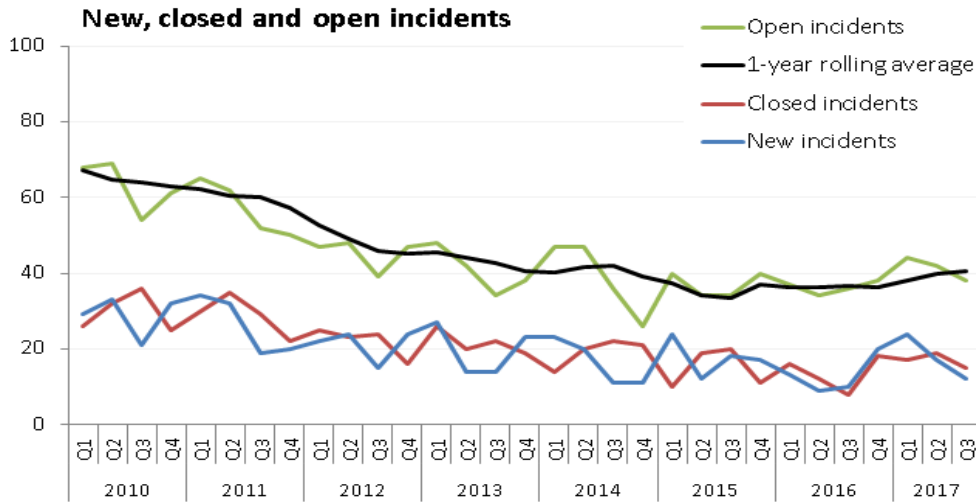


# INTERMEDIATE TB AREA – MID

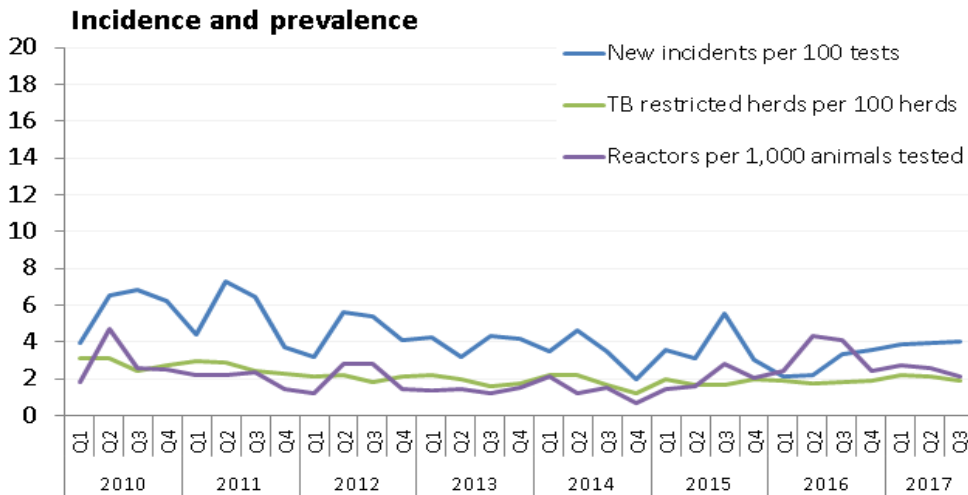
[← BACK](#)

## Q3 2017 summary

	New Herds	New Incidents	Incidents closed	Open Incidents	Reactors Disclosed	Q1 2010 to Q3 2017
Intermediate TB (Mid)	1,991	12	15	38 (-3)	81	

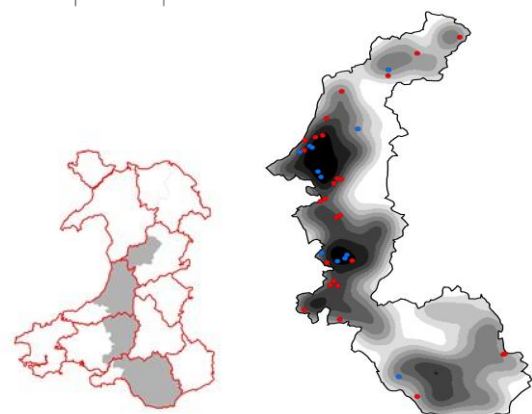


Long-term fall in new and open incidents



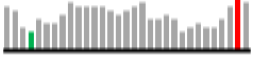
Steady decline in incidence measure

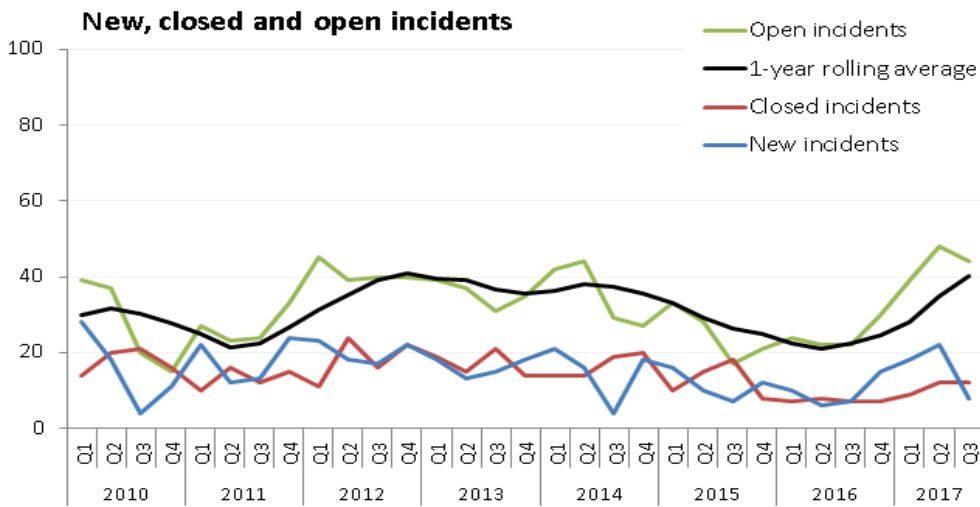
Mid-2016 spike in reactors per 1,000 animals tested



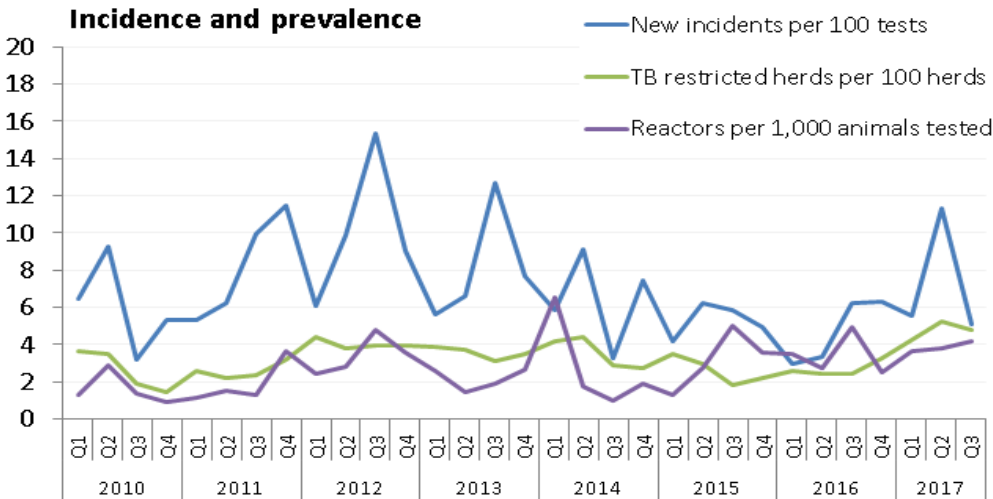
# INTERMEDIATE TB AREA – NORTH ◀ BACK

## Q3 2017 summary

	New Herds	New Incidents	Incidents closed	Open Incidents	Reactors Disclosed	Q1 2010 to Q3 2017
Intermediate TB (North)	921	8	12	44 (-4)	180	

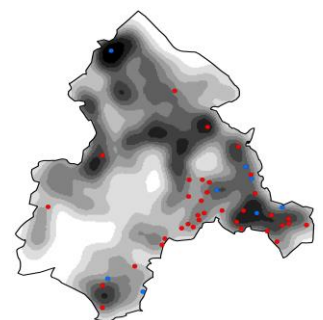


Sharp increase in open incidents after steady long-term fall



Sharp increase in incidence measure after long-term downward trend


Prevalence consistently between 2% and 4% until recently

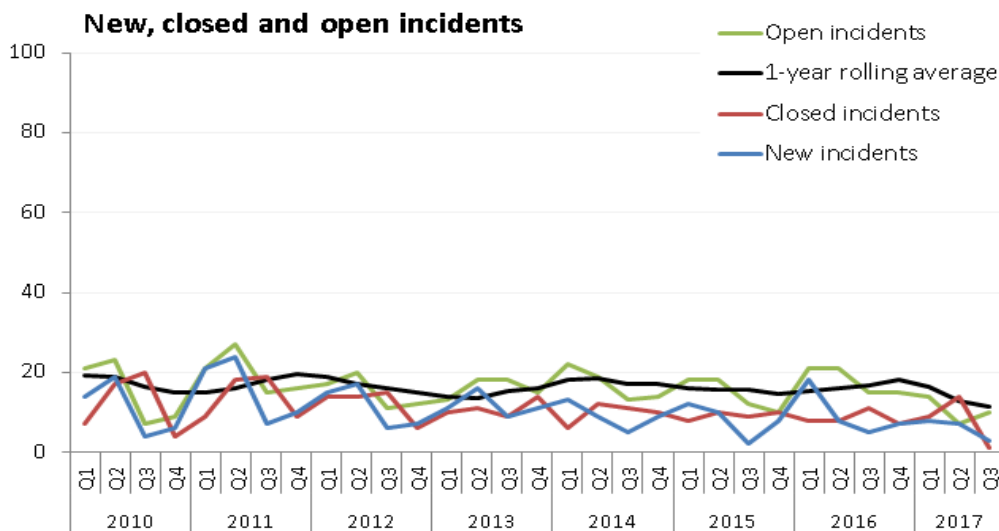


# LOW TB AREA

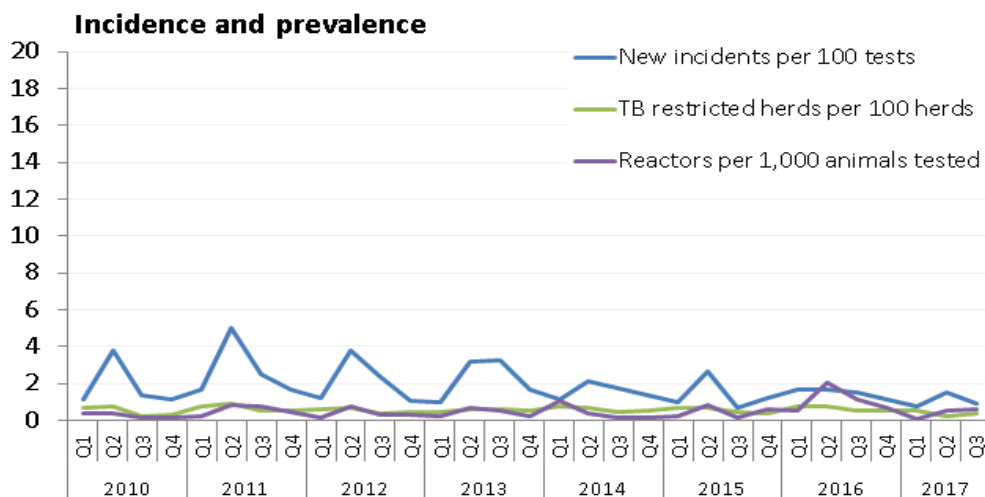
◀ BACK

## Q3 2017 summary

	New Herds	New Incidents	Incidents closed	Open Incidents	Reactors Disclosed	Q1 2010 to Q3 2017
Low TB	2,773	3	1	10 (+2)	25	

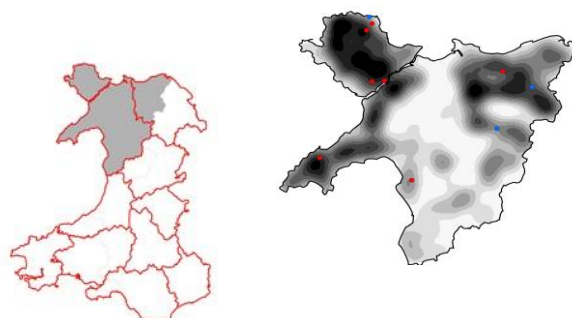


No discernable long-term trend in new, closed and open incidents

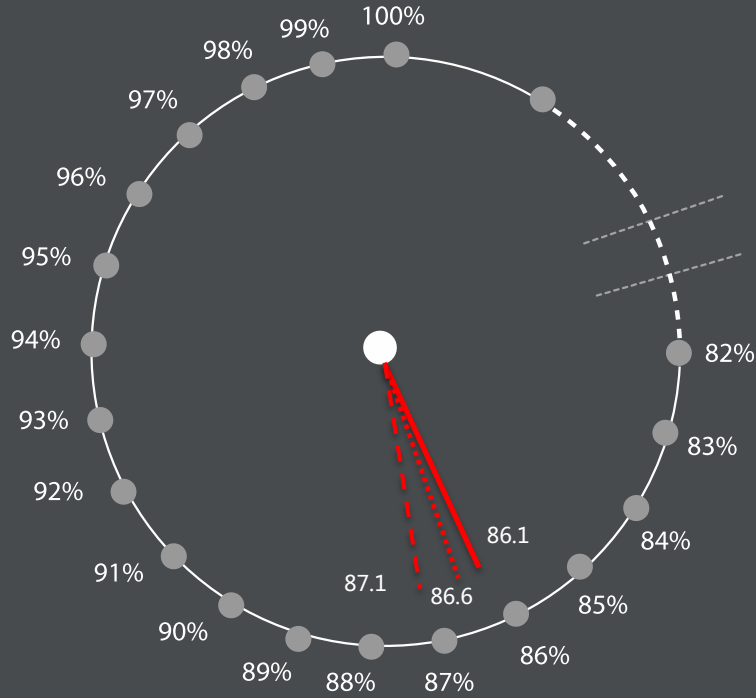


Persistently low levels of TB

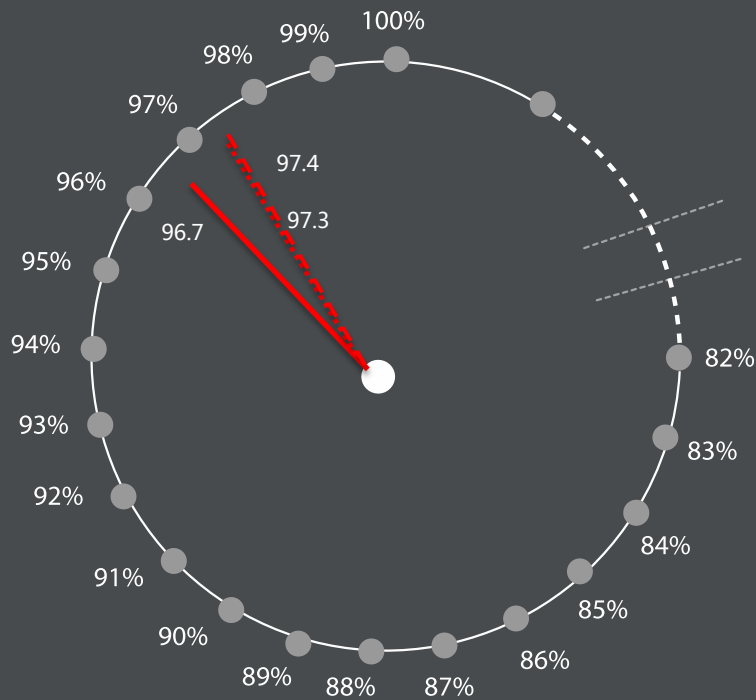
Incidence, prevalence and animal risk consistently the lowest in Wales



## Dairy Gauge 2,362 herds



## Beef Gauge 9,022 herds



— QTR 3 2017    - - - QTR 3 2016    ..... QTR 3 2015