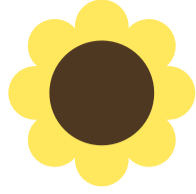


A



Afal - Apple

B



Blodyn - Flower

C



Cloc - Clock

Ch



Chwarae - Play

D



Drws - Door

DD



y Ddraig - Dragon

E



Enfys - Rainbow

F



Fan - Van

Ff



Ffidil - Violin

G



Gwrach - witch

Ng



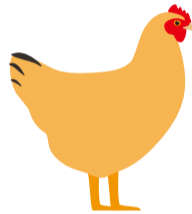
fy Ngwely - My Bed

H



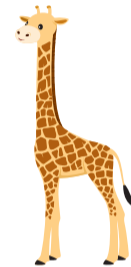
Hufen ia - Ice cream

I



Iâr - Chicken

J



Jiraff - Giraffe

L



Lemwn - Lemon

Ll



Llew - Lion

M



moli - praise

N



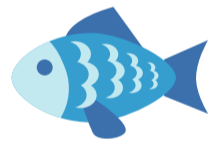
Nyth - Nest

O



Oren - Orange

P



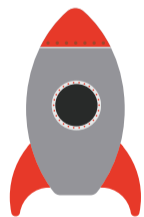
Pysgodyn - fish

Ph



ei pherlau - her Pearls

R



Roced - Rocket

Rh



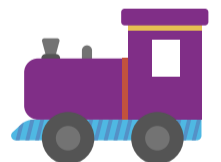
Rhosyn - Rose

S



Seren - Star

T



Trên - Train

Th



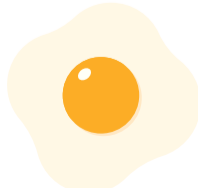
Thermometr - Thermometer

U



Uncorn - Unicorn

W



Ŵy - egg

Y



Ymbarel - Umbrella



Magu plant.  
Rhowch amser iddo.

Parenting.  
Give it time.