



Consultation summary

Social Services and Well-being (Wales) Act 2014



Part 6

Children in Care and Care Leavers



Rules and information about how to do what the Act says



Easy Read version



Social Services and Well-being (Wales) Act 2014



The new Act is about social care in Wales.



The Act starts in April 2016.



As well as the Act, there are:



- rules. We call the rules **Regulations**.



- information on how to do what the law says, called **Codes of Practice** or **Statutory Guidance**.



How we did this work



We listened to experts from all over Wales.



Then we wrote our ideas.



Now we want to know what everyone thinks.



The new Act has a lot of Parts.

Each Part is about something different.



From May to July 2015, we are asking what everyone thinks about the rules for:



Part 4

Paying towards Direct Payments and choosing a care home

and

Part 5

Paying a charge for care and support



Part 6

Children in care and care leavers





Part 9

Working Together



Part 10

Advocacy





Part 6

Part 6 of the new Act is about children in care and care leavers.

Part 6 of the new Act is **not** about children who need care and support from social services.



Part 6

The rules

We have written 4 sets of rules. These are about:



- Planning for a child in care, choosing where the child will live and checking the child's needs are being met.
- Care leavers. These rules replace the Children (Leaving Care) Act.



- Visits to children in detention



- Children who are in secure accommodation



The rules tell local councils what they must do for:



- Young people who want to stay with their foster carer after their 18th birthday



- Children and young people who are in secure accommodation



The rules also say that any child in secure accommodation is a child in care.



Part 6

How do to what the new Act says



There are 8 chapters about:



1. Planning. This says what the local council must do.

It includes plans for a child's health and education.



2. Choosing where a child in care lives.



This chapter has rules for living with a parent, foster carers or in a children's home.



It says the things a local council must think about before they choose.



For example, they must think about the child's education.



It has rules for what must be written down and who must be told when a child goes into care or moves to a new placement.



There are extra rules if the council want to move the child to another council area, or outside Wales.



3. Visiting the child, and contact between the child and their family or friends.



This chapter has rules about visits by a local council to see the child in care.



It also has rules about choosing an independent visitor to visit the child.



4. Checking if the child's needs are being met.

This includes rules about meetings and planning.



5. Leaving care.

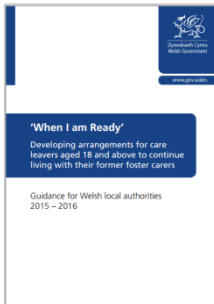
This has rules about planning for someone to leave care and support for care leavers until their 25th birthday.



It explains who will get support.



Support can include help to find somewhere to live and support to keep studying or training.



6. Where someone can live after their 18th birthday.

This has rules for care leavers who want to stay with their foster carer after their 18th birthday.

In Wales, we call this the 'When I am Ready' scheme.

This chapter explains 'When I am Ready'. It tells local councils how to make good plans.

7. Secure accommodation.

This has rules when a child needs to be kept secure.

It includes the longest a child can be kept secure without a court order.

8. Living somewhere like a school or hospital

