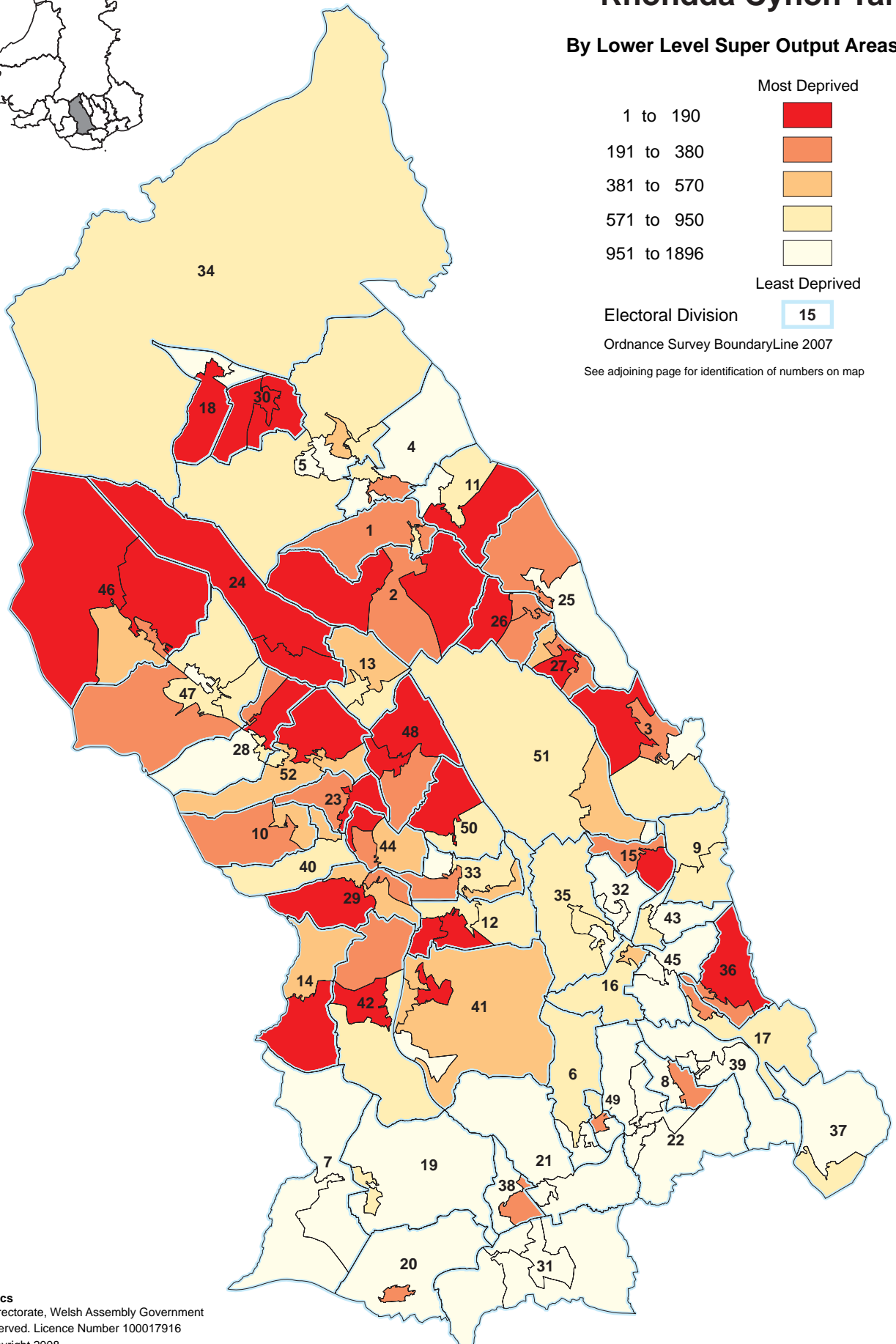


# Overall Index of Multiple Deprivation

## Rhondda Cynon Taf

By Lower Level Super Output Areas



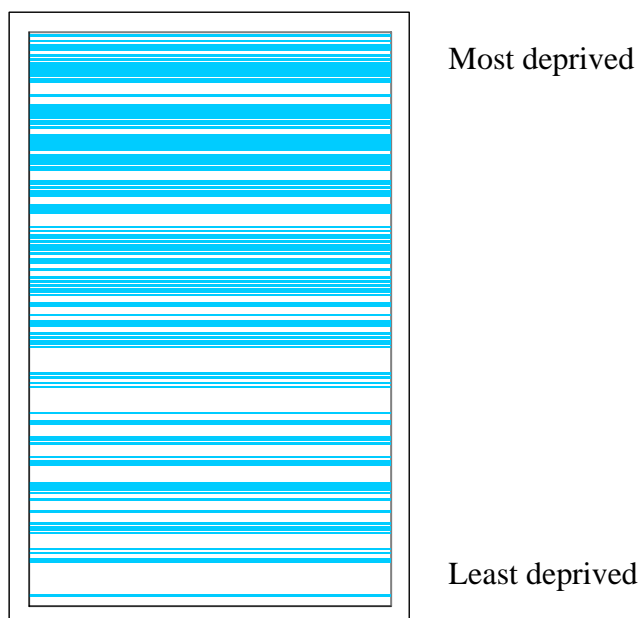


## Rhondda Cynon Taf

The shaded map of the 152 LSOAs in the Rhondda Cynon Taf shows that 28 were in the most deprived 10% LSOAs in Wales. The three most deprived LSOAs in Rhondda Cynon Taf were:

- Penrhiwceiber 1 with a score of 72.5, which ranked 10 out of 1896 in Wales. This LSOA was placed in the 10% most deprived category in Wales.
- Pen-y-waun 2 with a score of 70.8, which ranked 12 out of 1896 in Wales. This LSOA was placed in the 10% most deprived category in Wales.
- Tylorstown 1 with a score of 69.9, which ranked 16 out of 1896 in Wales. This LSOA was placed in the 10% most deprived category in Wales.

### The position of LSOAs in Rhondda Cynon Taf in the ranked list for Wales.



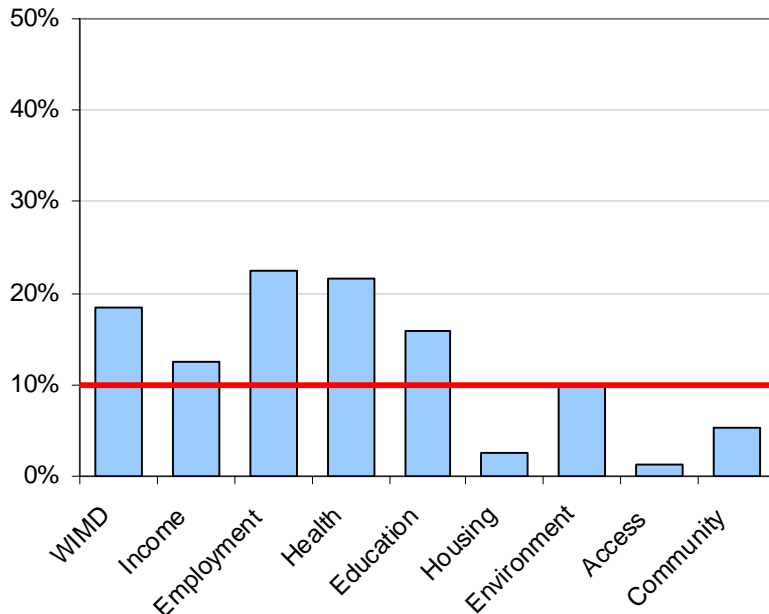
In Rhondda Cynon Taf;

- The LSOAs had deprivation score distributed over 98% of the range for Wales.
- 18% of its LSOAs fall within the 10% most deprived LSOAs in Wales.
- 70% of its LSOAs fall within the 50% most deprived LSOAs in Wales.
- There are much higher than average levels of deprivation in all of the 4 most deprived categories (most deprived 10%, 20%, 30% and 50%).

### Key to map:

1. Aberaman North	14. Gilfach Goch	27. Penrhiwceiber	40. Tonypandy
2. Aberaman South	15. Glyncoch	28. Pentre	41. Tonyrefail East
3. Abercynon	16. Graig	29. Pen-y-Graig	42. Tonyrefail West
4. Aberdare East	17. Hawthorn	30. Pen-y-Waun	43. Trallwng
5. Aberdare West/Llwydcoed	18. Hirwaun	31. Pont-y-Clun	44. Trealaw
6. Beddau	19. Llanharan	32. Pontypridd Town	45. Treforest
7. Brynna	20. Llanharry	33. Porth	46. Treherbert
8. Church Village	21. Llantrisant Town	34. Rhigos	47. Treorchy
9. Cilfynydd	22. Llantwit Fardre	35. Rhondda	48. Tylorstown
10. Cwm Clydach	23. Llwyn-y-Pia	36. Rhydfelen Central/Ilan	49. Tyn-y-Nant
11. Cwmbach	24. Maerdy	37. Taffs Well	50. Ynysir
12. Cymmer	25. Mountain Ash East	38. Talbot Green	51. Ynysybwl
13. Ferndale	26. Mountain Ash West	39. Ton-Teg	52. Ystrad

**The percentage of LSOAs in Rhondda Cynon Taf that are in the 10% most deprived LSOAs in Wales, by domain**



In the 10% most deprived LSOAs for Wales there are:

Above average numbers of LSOAs in Rhondda Cynon Taf for:

- Overall Deprivation (18%)
- Income (13%)
- Employment (22%)
- Health (22%)
- Education (16%)

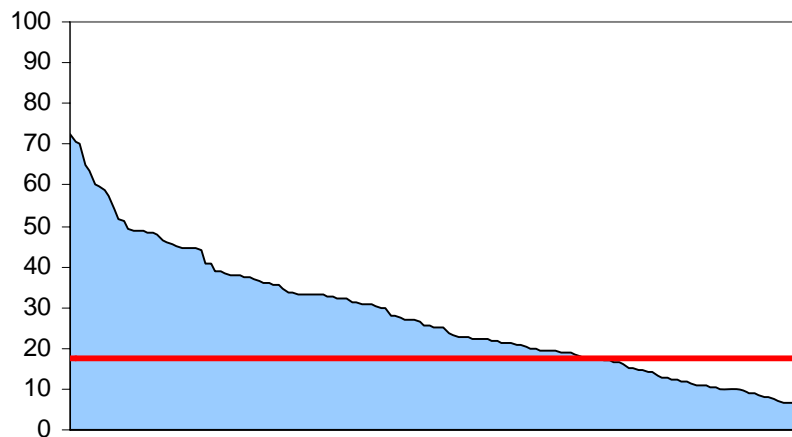
Average numbers of LSOAs in Rhondda Cynon Taf for:

- Environment

Below average numbers of LSOAs in Rhondda Cynon Taf for:

- Housing (3%)
- Access (1%)
- Community (5%)

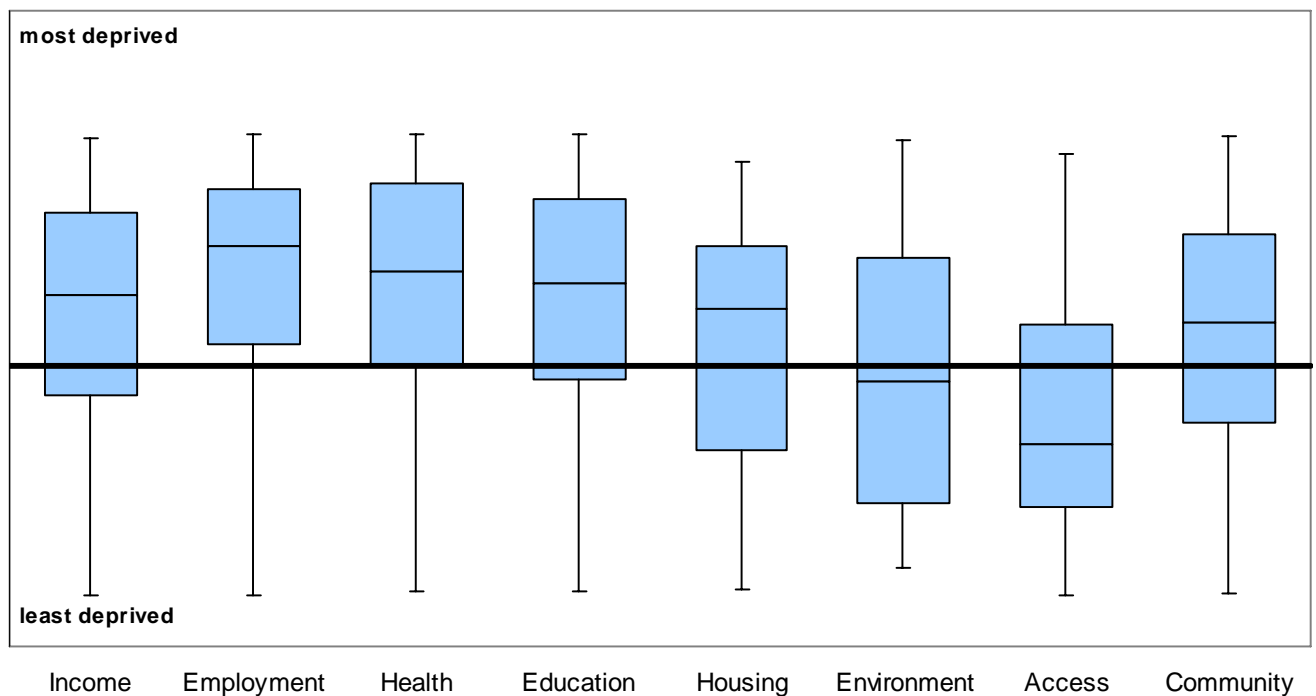
**The distribution of overall multiple deprivation scores for Rhondda Cynon Taf**



70% of LSOAs in Rhondda Cynon Taf were more deprived than the Wales average.

The most deprived LSOA in Rhondda Cynon Taf was Penrhiwceiber 1 with a score of 72.5.

### Levels of spread of deprivation by domain in Rhondda Cynon Taf relative to the median level of deprivation for Wales



In Rhondda Cynon Taf:

The median rank was noticeably:

- more deprived than the median rank for Wales for:
  - Income
  - Employment
  - Health
  - Education
  - Housing
  - Community
- less deprived than the median rank for Wales for:
  - Access

The spread of ranks was:

- largest for Employment (1888 ranks).
- smallest for Housing (1746 ranks).

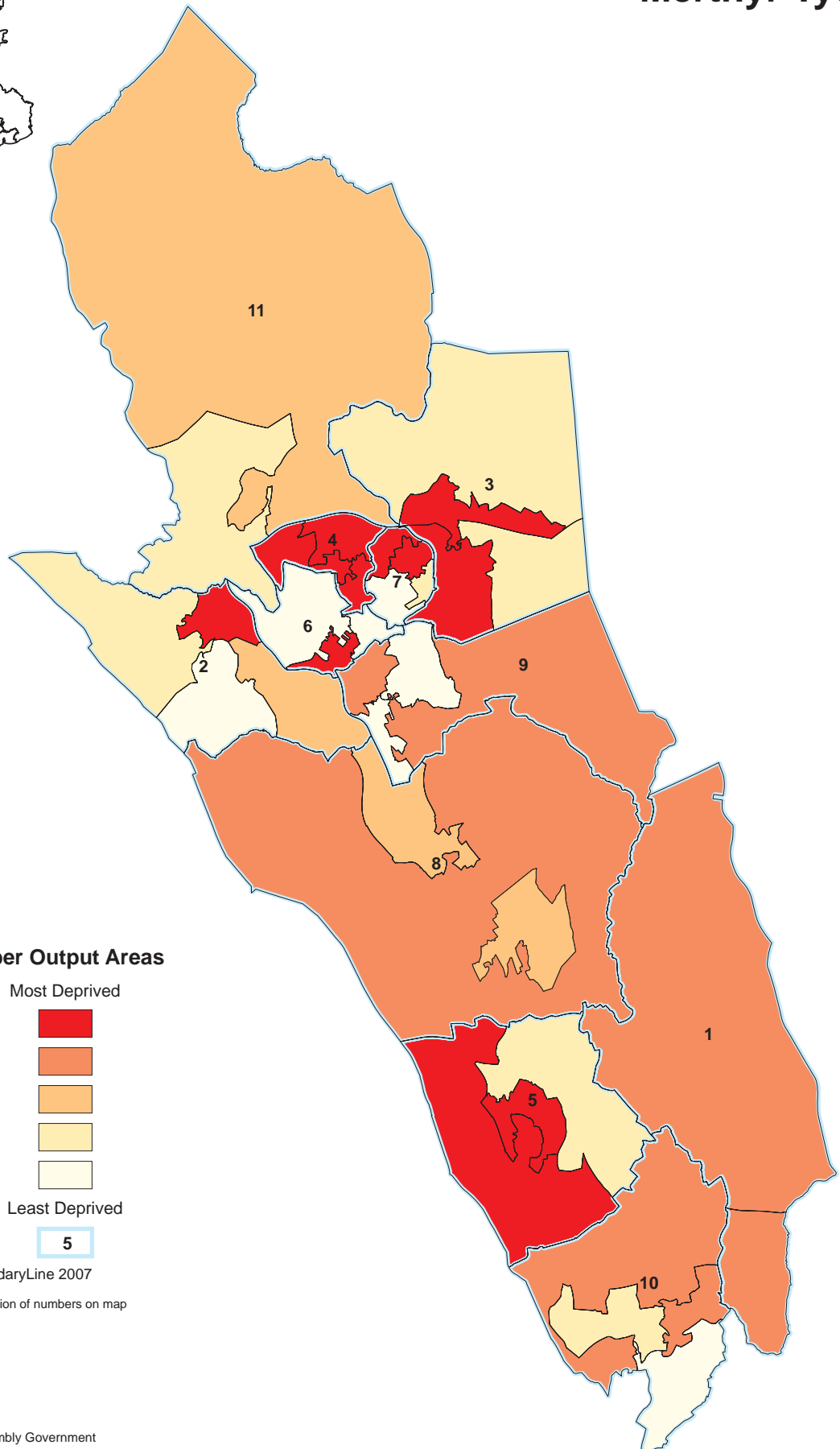
The spread of the middle 50% of ranks was:

- largest for Environment (1001.5 ranks).
- smallest for Employment (637.75 ranks).

The middle 50% of ranks was noticeably skewed towards the more deprived end of the scale for:

- Access

# Overall Index of Multiple Deprivation Merthyr Tydfil



## By Lower Level Super Output Areas

	Most Deprived
1 to 190	<span style="display:inline-block; width:15px; height:15px; background-color:red;"></span>
191 to 380	<span style="display:inline-block; width:15px; height:15px; background-color:darkorange;"></span>
381 to 570	<span style="display:inline-block; width:15px; height:15px; background-color:orange;"></span>
571 to 950	<span style="display:inline-block; width:15px; height:15px; background-color:yellow;"></span>
951 to 1896	<span style="display:inline-block; width:15px; height:15px; background-color:lightyellow;"></span>

Least Deprived

Electoral Division

5

Ordnance Survey BoundaryLine 2007

See adjoining page for identification of numbers on map

## Cartographics

Statistical Directorate, Welsh Assembly Government  
All rights reserved. Licence Number 100017916

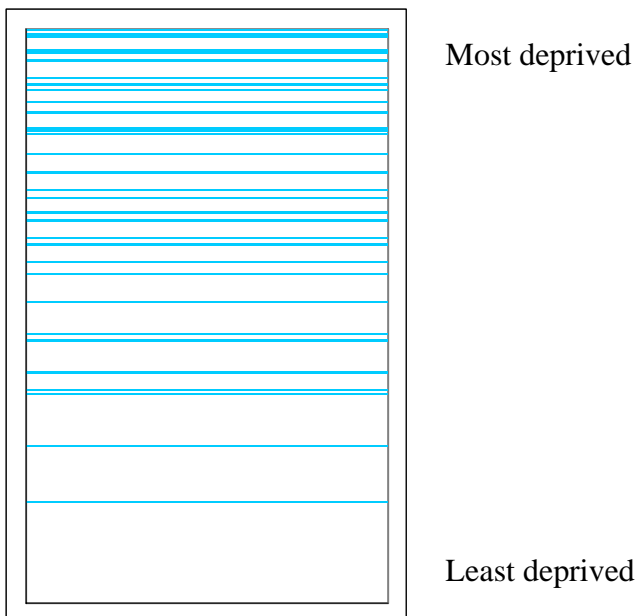
© Crown copyright 2008



The shaded map of the 36 LSOAs in the Merthyr Tydfil shows that 11 were in the most deprived 10% LSOAs in Wales. The three most deprived LSOAs in Merthyr Tydfil were:

- Penydarren 1 with a score of 73.6, which ranked 7 out of 1896 in Wales. This LSOA was placed in the 10% most deprived category in Wales.
- Gurnos 2 with a score of 69.9, which ranked 17 out of 1896 in Wales. This LSOA was placed in the 10% most deprived category in Wales.
- Cyfarthfa 2 with a score of 69.3, which ranked 18 out of 1896 in Wales. This LSOA was placed in the 10% most deprived category in Wales.

### The position of LSOAs in Merthyr Tydfil in the ranked list for Wales.



### In Merthyr Tydfil:

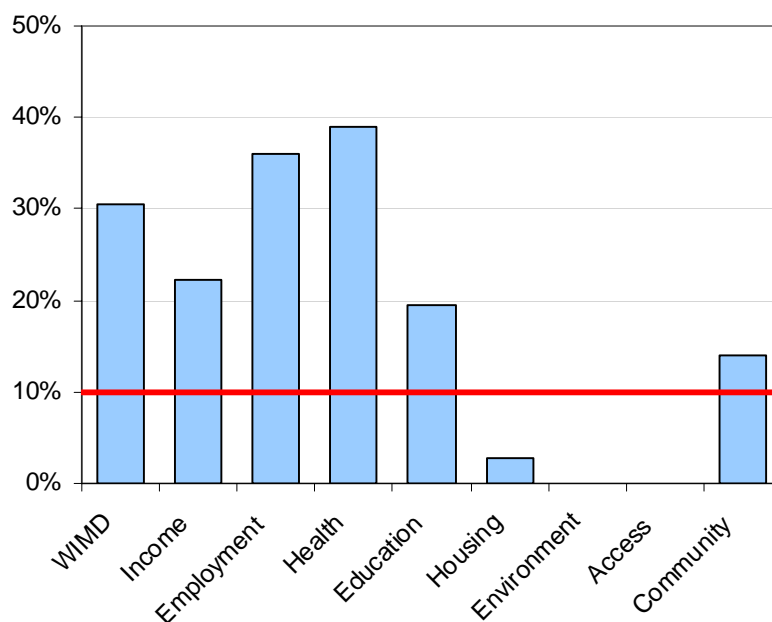
- The LSOAs had deprivation score distributed over 82% of the range for Wales.
- 31% of its LSOAs fall within the 10% most deprived LSOAs in Wales.
- 81% of its LSOAs fall within the 50% most deprived LSOAs in Wales.
- There are much higher than average levels of deprivation in all of the 4 most deprived categories (most deprived 10%, 20%, 30% and 50%).

---

### Key to map:

1. Bedlinog
2. Cyfarthfa
3. Dowlais
4. Gurnos
5. Merthyr Vale
6. Park
7. Penydarren
8. Plymouth
9. Town
10. Treharris
11. Vaynor

**The percentage of LSOAs in Merthyr Tydfil that are in the 10% most deprived LSOAs in Wales, by domain**



In the 10% most deprived LSOAs for Wales there are:

Above average numbers of LSOAs in Merthyr Tydfil for:

- Overall Deprivation (31%)
- Income (22%)
- Employment (36%)
- Health (39%)
- Education (19%)
- Community (14%)

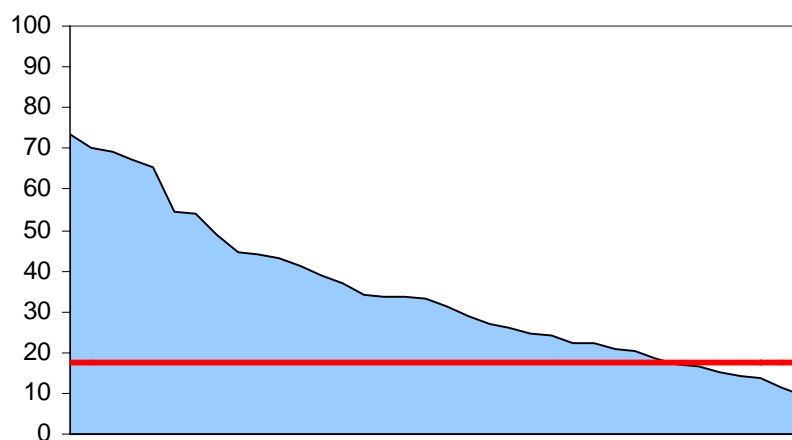
Below average numbers of LSOAs in Merthyr Tydfil for:

- Housing (3%)

No LSOAs in Merthyr Tydfil for:

- Environment
- Access

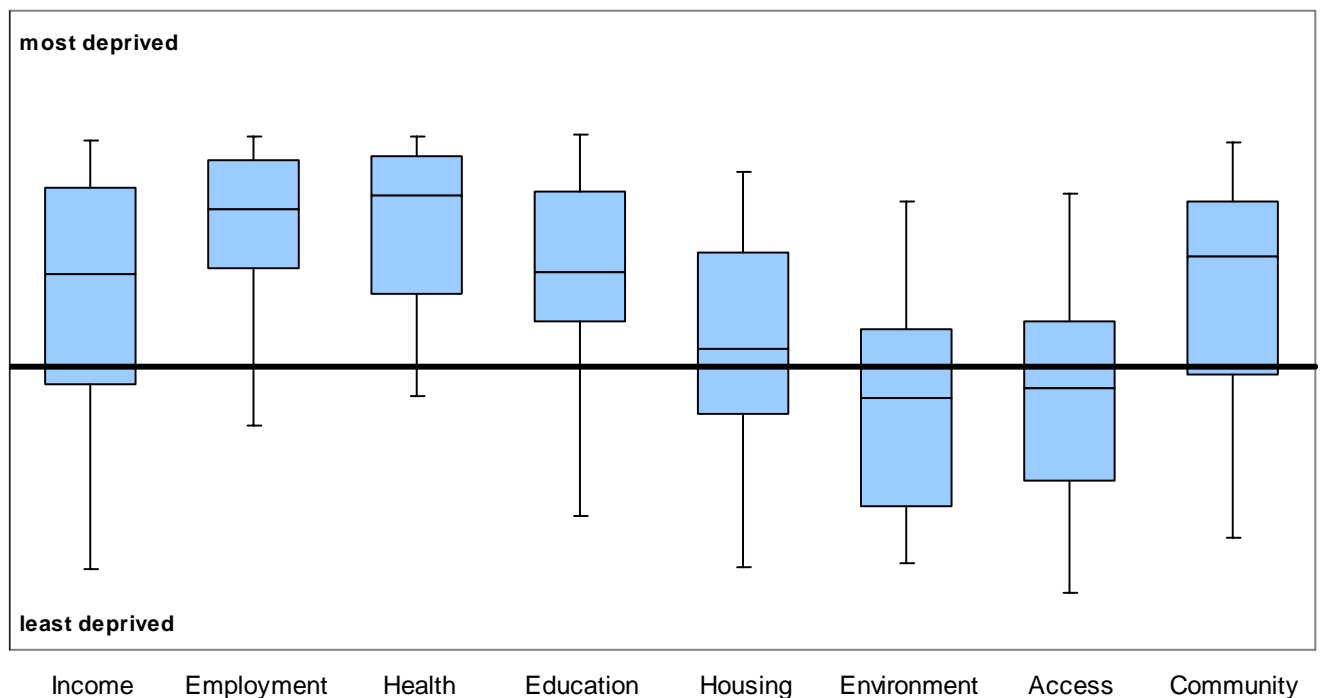
**The distribution of overall multiple deprivation scores for Merthyr Tydfil**



81% of LSOAs in Merthyr Tydfil were more deprived than the Wales average.

The most deprived LSOA in Merthyr Tydfil was Penydarren 1 with a score of 73.6.

### Levels of spread of deprivation by domain in Merthyr Tydfil relative to the median level of deprivation for Wales



In Merthyr Tydfil:

The median rank was noticeably:

- more deprived than the median rank for Wales for:
  - Income
  - Employment
  - Health
  - Education
  - Community
- less deprived than the median rank for Wales for:
  - Environment

The spread of ranks was:

- largest for Income (1739 ranks).
- smallest for Health (1055 ranks).

The spread of the middle 50% of ranks was:

- largest for Income (804.25 ranks).
- smallest for Employment (441 ranks).

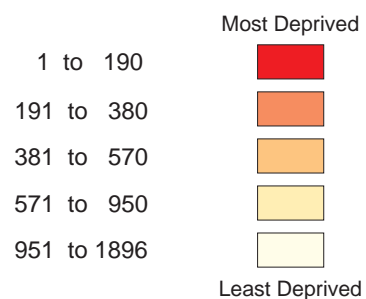
The middle 50% of ranks was noticeably skewed towards the more deprived end of the scale for:

- Education



# Overall Index of Multiple Deprivation Caerphilly

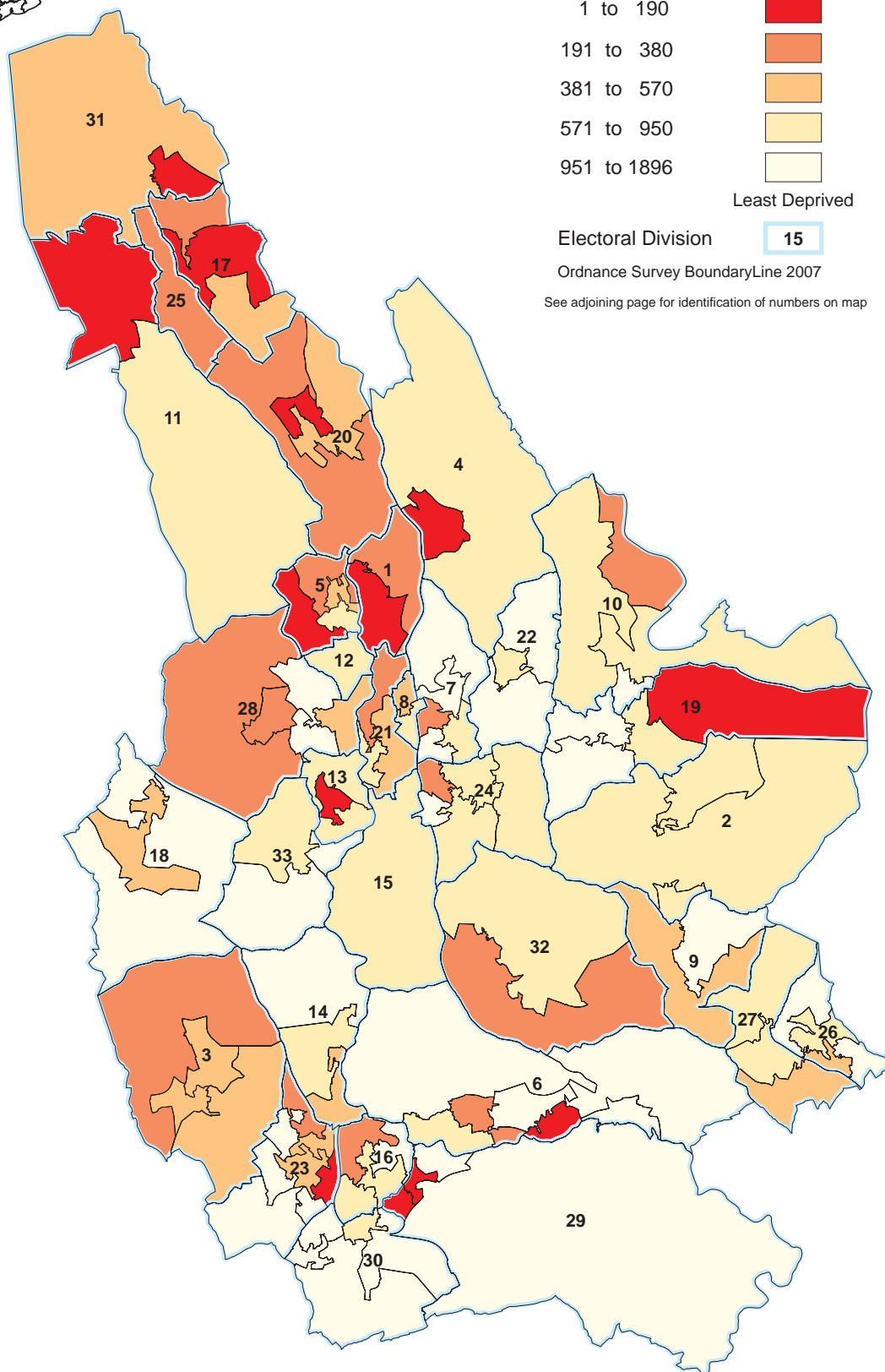
By Lower Level Super Output Areas



Electoral Division **15**

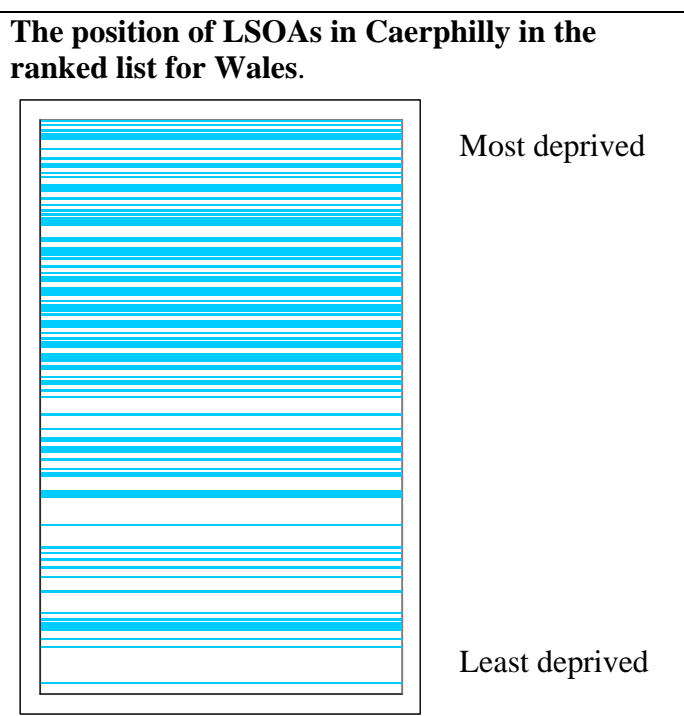
Ordnance Survey BoundaryLine 2007

See adjoining page for identification of numbers on map



The shaded map of the 110 LSOAs in Caerphilly shows that 13 were in the most deprived 10% LSOAs in Wales. The three most deprived LSOAs in Caerphilly were:

- Twyn Carno 1 with a score of 73.4, which ranked 8 out of 1896 in Wales. This LSOA was placed in the 10% most deprived category in Wales.
- St. James 3 with a score of 73.0, which ranked 9 out of 1896 in Wales. This LSOA was placed in the 10% most deprived category in Wales.
- Bargoed 4 with a score of 68.3, which ranked 21 out of 1896 in Wales. This LSOA was placed in the 10% most deprived category in Wales.



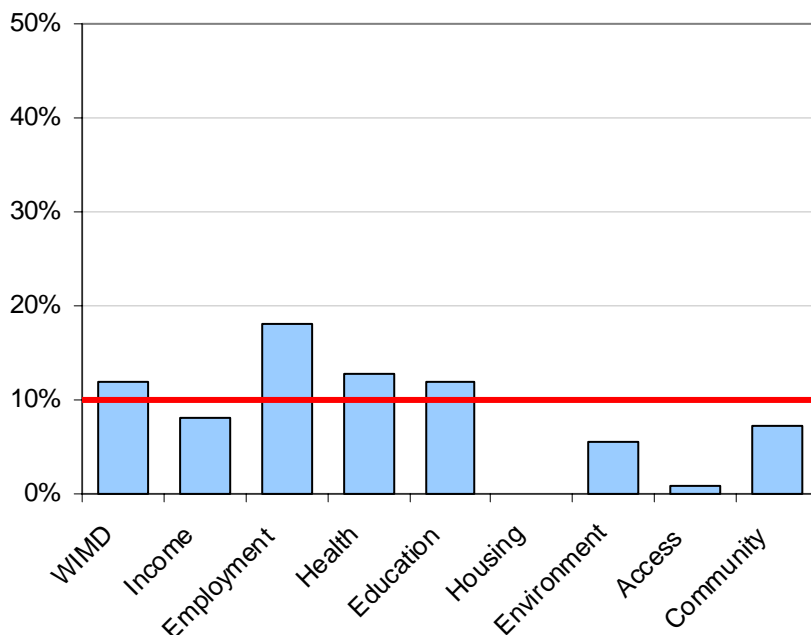
In Caerphilly:

- The LSOAs had deprivation score distribution over 98% of the range for Wales.
- 12% of its LSOAs fall within the 10% most deprived LSOAs in Wales.
- 69% of its LSOAs fall within the 50% most deprived LSOAs in Wales.
- There are higher than average levels of deprivation in all of the 4 most deprived categories (most deprived 10%, 20%, 30% and 50%).

#### Key to map:

1. Aberbargoed	12. Gilfach	23. Penyrheol
2. Abercarn	13. Hengoed	24. Pontllanfraith
3. Aber Valley	14. Llanbradach	25. Pontlloftyn
4. Argoed	15. Maesycwmmmer	26. Risca East
5. Bargoed	16. Morgan Jones	27. Risca West
6. Bedwas, Trethomas and Machen	17. Moriah	28. St. Cattwg
7. Blackwood	18. Nelson	29. St. James
8. Cefn Fforest	19. Newbridge	30. St. Martins
9. Crosskeys	20. New Tredegar	31. Twyn Carno
10. Crumlin	21. Pengam	32. Ynysddu
11. Darren Valley	22. Penmaen	33. Ystrad Mynach

**The percentage of LSOAs in Caerphilly that are in the 10% most deprived LSOAs in Wales, by domain**



In the 10% most deprived LSOAs for Wales there are:

Above average numbers of LSOAs in Caerphilly for:

- Overall Deprivation (12%)
- Employment (18%)
- Health (13%)
- Education (12%)

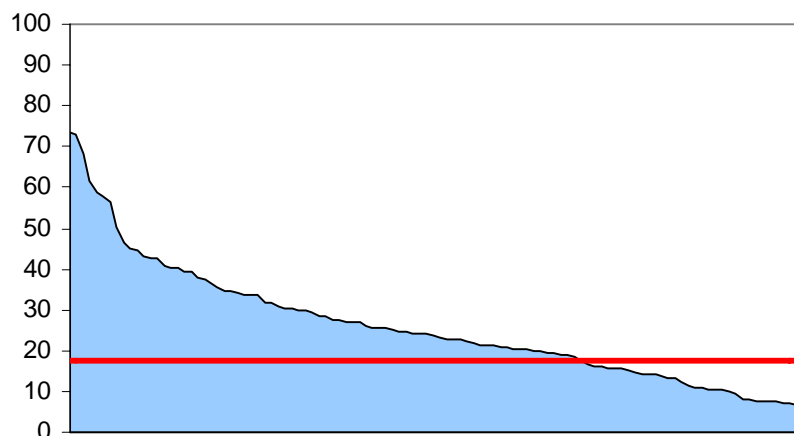
Below average numbers of LSOAs in Caerphilly for:

- Income (8%)
- Environment (5%)
- Access (1%)
- Community (7%)

No LSOAs in Caerphilly for:

- Housing

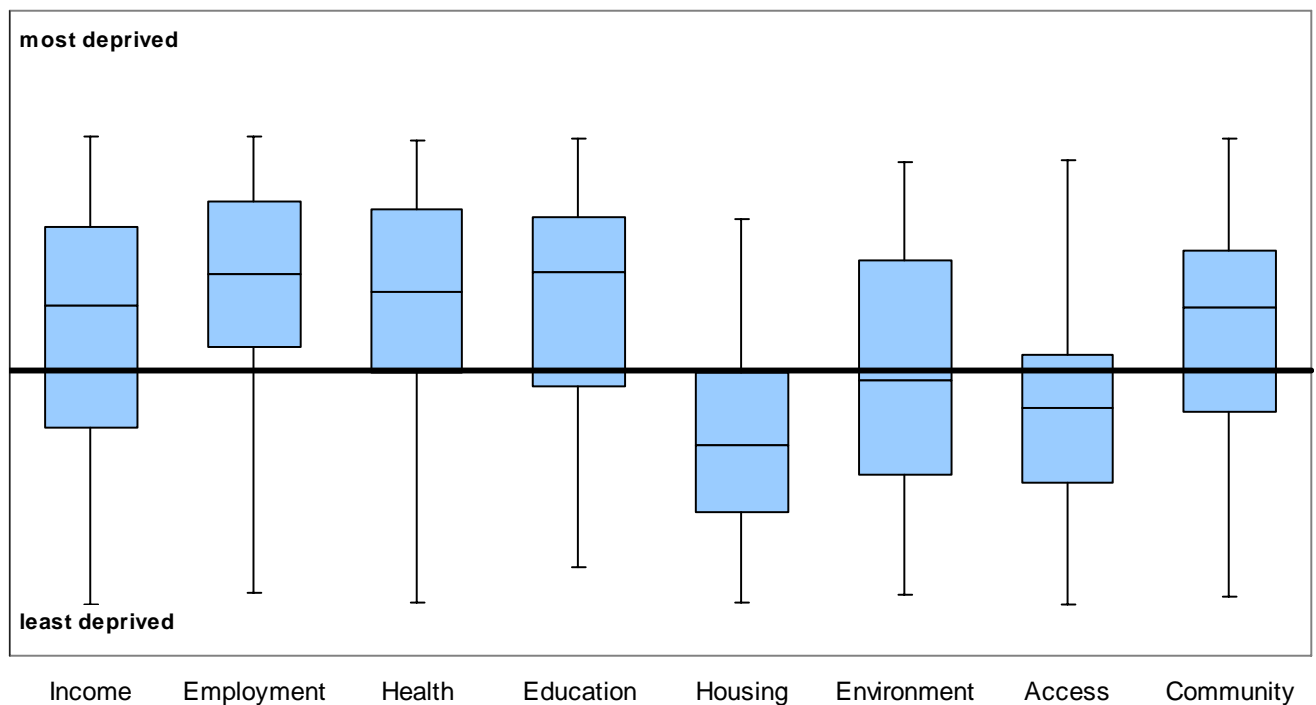
**The distribution of overall multiple deprivation scores for Caerphilly**



69% of Caerphilly's LSOAs were more deprived than the Wales average.

The most deprived LSOA in Caerphilly was Twyn Carno 1 with a score of 73.4.

### Levels of spread of deprivation by domain in Caerphilly relative to the median level of deprivation for Wales



In Caerphilly:

The median rank was noticeably:

- more deprived than the median rank for Wales for:
  - Income
  - Employment
  - Health
  - Education
  - Community
- less deprived than the median rank for Wales for:
  - Housing
  - Access

The spread of ranks was:

- largest for Income (1885 ranks).
- smallest for Housing (1549 ranks).

The spread of the middle 50% of ranks was:

- largest for Environment (863.25 ranks).
- smallest for Access (516 ranks).

The middle 50% of ranks was noticeably skewed towards the more deprived end of the scale for:

- Housing
- Environment